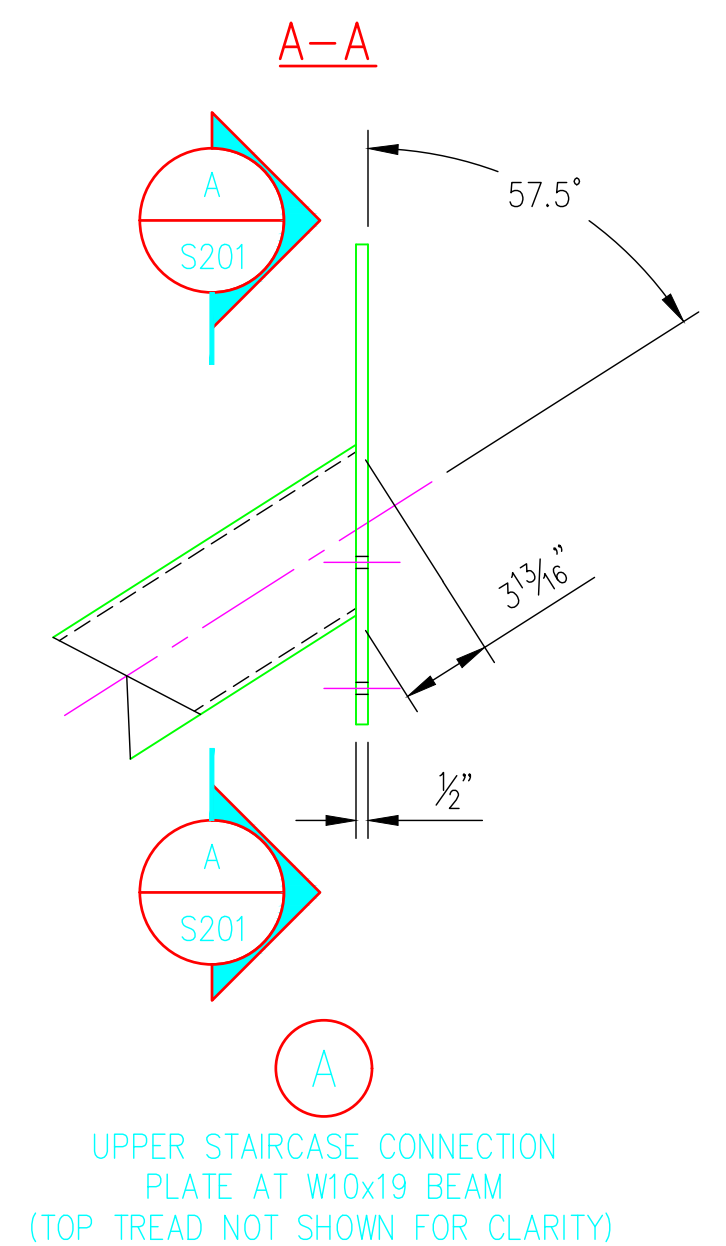
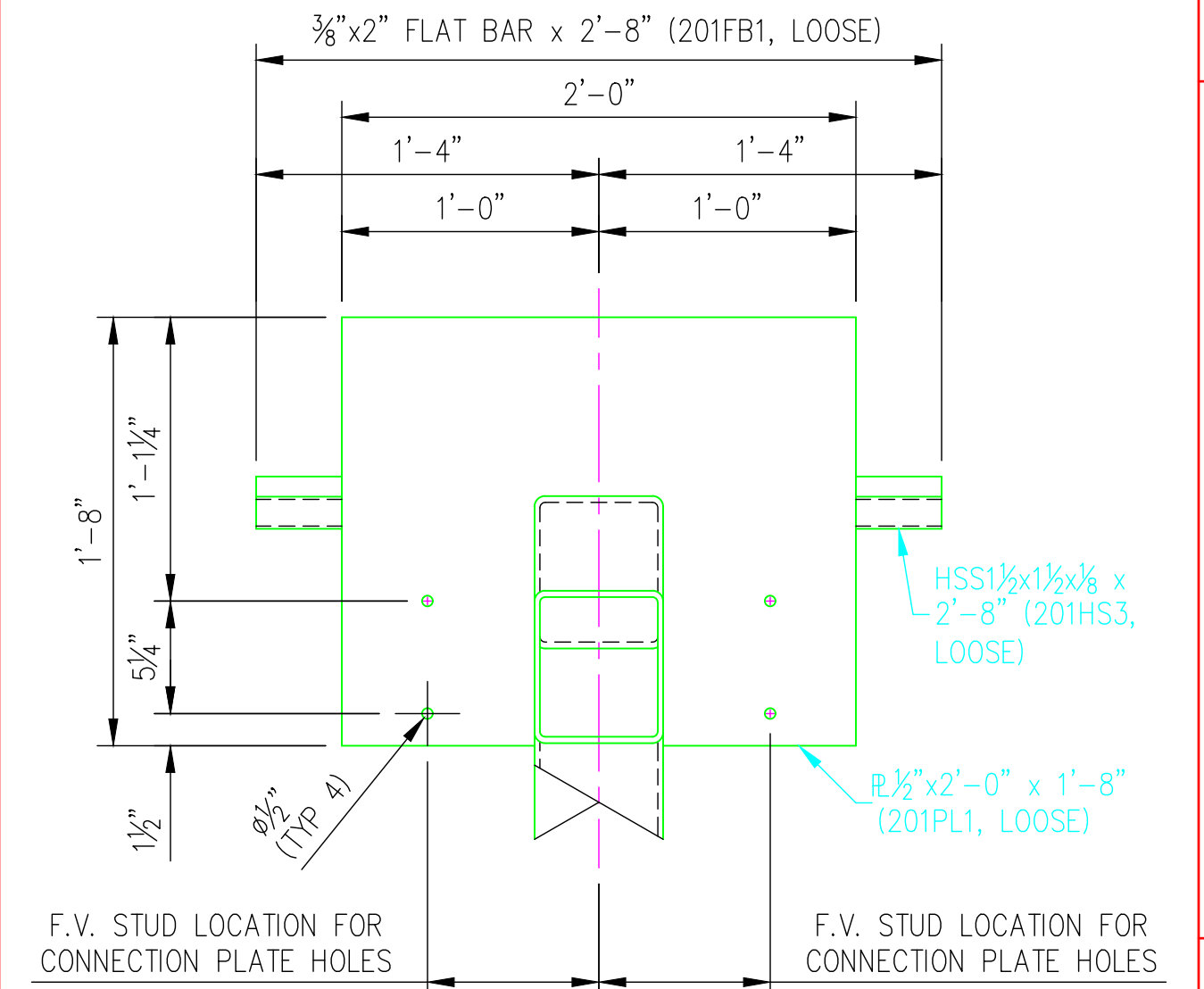


**BILL OF MATERIAL**

MARK	QTY	DESCRIPTION	FT	IN	REMARKS
	1	MONORAIL STAIRCASE STRUCTURE			
201USC	1	UPPER STAIRCASE			
201HS1	1	HSS6x6x¼	14	10¾	
201PL1	1	½"x2'-0"	1	8	
201HS2	13	HSS6x6x¼	0	5¾	
201BFP1	13	¾"x3'-2"	0	11¼	BRAKEFORMED
201FB1	1	¾"x2" FLAT BAR	2	8	SHIPS LOOSE
201HS3	1	HSS1½x1½x½	2	8	SHIPS LOOSE

ALL SIZES SHOWN ARE FOR FINISHED MATERIALS

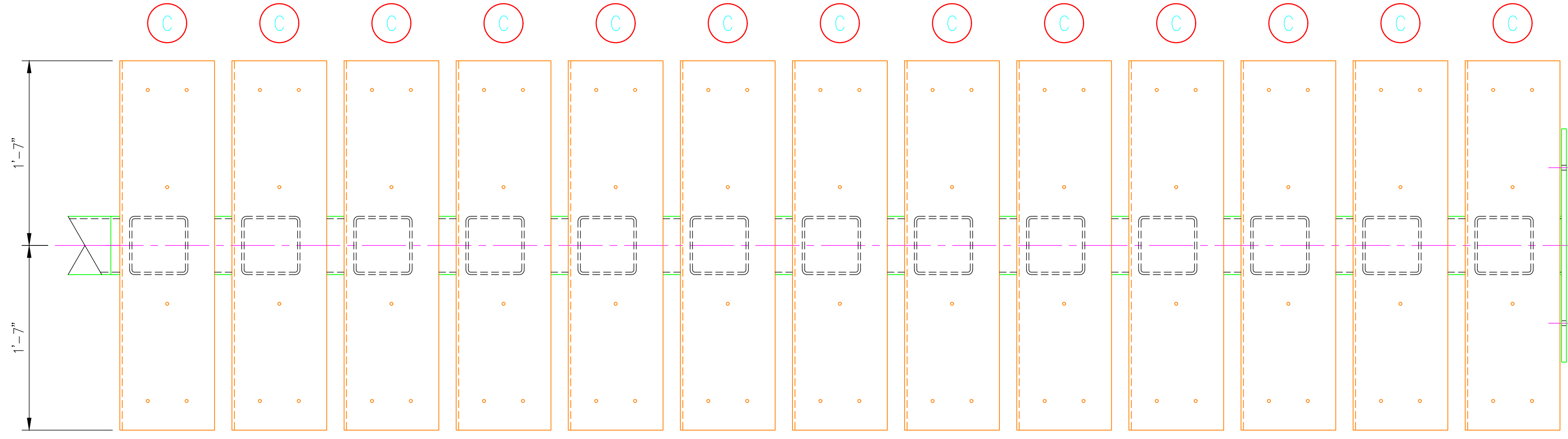


UPPER STAIRCASE CONNECTION PLATE AT W10x19 BEAM (TOP TREAD NOT SHOWN FOR CLARITY)

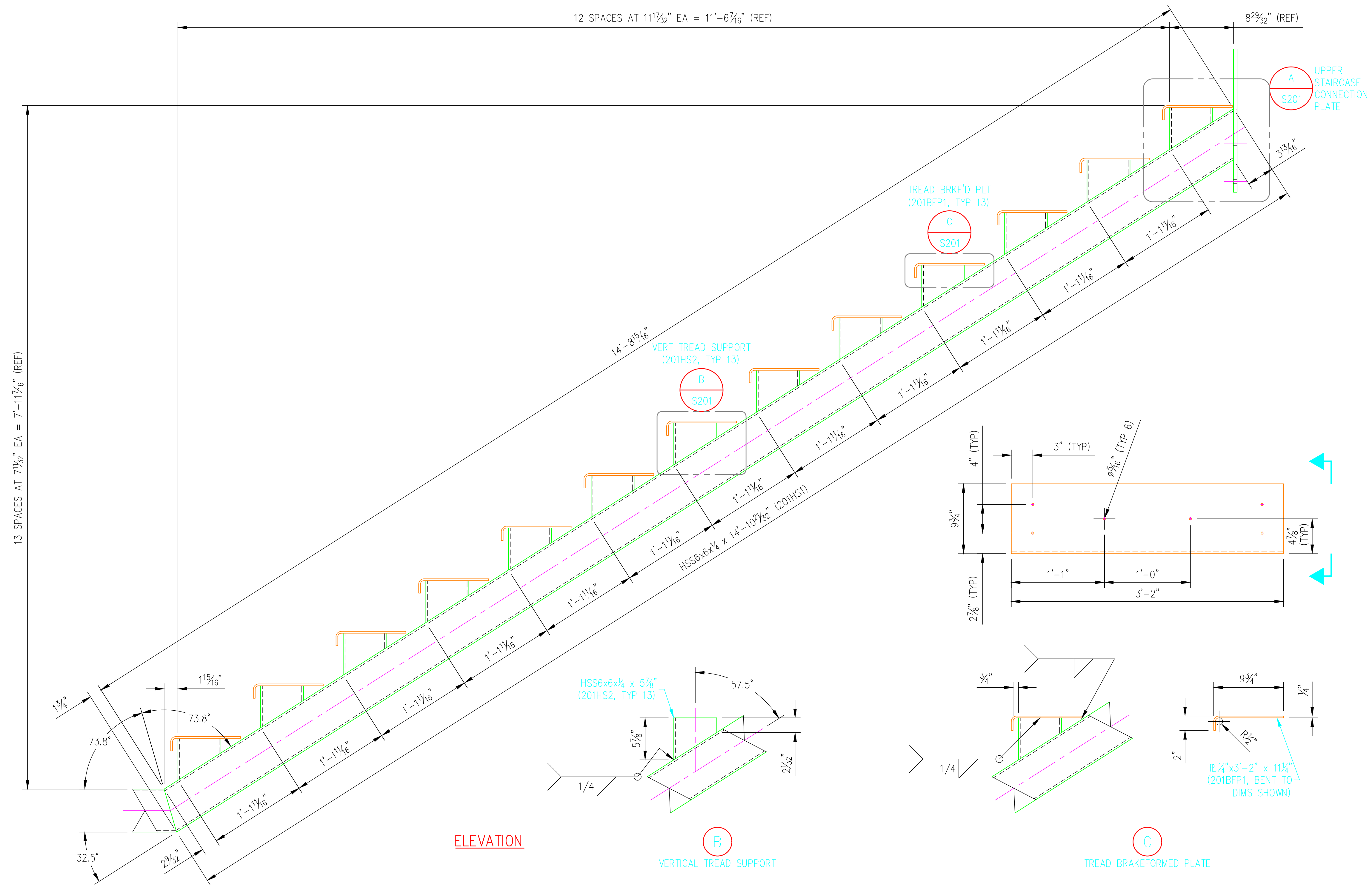
FOR FABRICATION  
01/18/23

**MATERIAL, COATING & FABRICATION SPECIFICATIONS**

MATERIALS & FABRICATION	COATINGS
ROLLED W SHAPES: ASTM A36	PRIME & PAINT STEEL AFTER FABRICATION
ROLLED CHANNELS, FLAT BARS, ANGLES, PLATES: ASTM A36	
HSS TUBES: ASTM A500, GRADE B	
PIPES: ASTM A53, GRADE B	
HEADED ANCHOR STUDS: ASTM A108	
FASTENERS: ASTM A325 OR A490	
SURFACE PREP: SSPC-SP6	
WELDING: AWS D1.1, AWS A5.1 CLASS E70XX-LOW HYDROGEN ELECTRODES	DO NOT SCALE DRAWINGS. ALL DIMENSIONS IN FT & IN UNLESS NOTED OTHERWISE.



**PLAN**



**ELEVATION**

**B**  
VERTICAL TREAD SUPPORT

**C**  
TREAD BRAKEFORMED PLATE

DATE: \_\_\_\_\_

REVISION DESCRIPTION: \_\_\_\_\_

ABC

ANDY'S BEST CAD  
1323 CARLYLE PARK CIRCLE  
HIGHLANDS RANCH, CO 80129  
303-808-3352  
WWW.ANDYSBESTCAD.COM

DRAWN: ABC  
DESIGNED: \_\_\_\_\_  
CLIENT: \_\_\_\_\_  
DATE: 01/18/23  
SCALE: AS SHOWN

PROJECT: MONORAIL STAIRCASE FRANKTOWN, CO STRUCTURAL STEEL SHOP DRAWINGS

DRAWING TITLE: UPPER STAIRCASE

DRAWING NO.: S12/201 or

©2023 ANDY'S BEST CAD. ALL RIGHTS RESERVED. THIS DRAWING IS THE PROPERTY OF ANDY'S BEST CAD AND IS PROTECTED BY COPYRIGHT LAWS OF THE UNITED STATES OF AMERICA. ANY UNAUTHORIZED USE OF THE INFORMATION CONTAINED HEREIN OR REPRODUCTION THEREOF DOES NOT CONFER OR TRANSFER ANY RIGHT TO MAKE, COPY, MANUFACTURE AND/OR SELL EITHER THE DRAWING OR THE ITEMS SHOWN THEREIN.