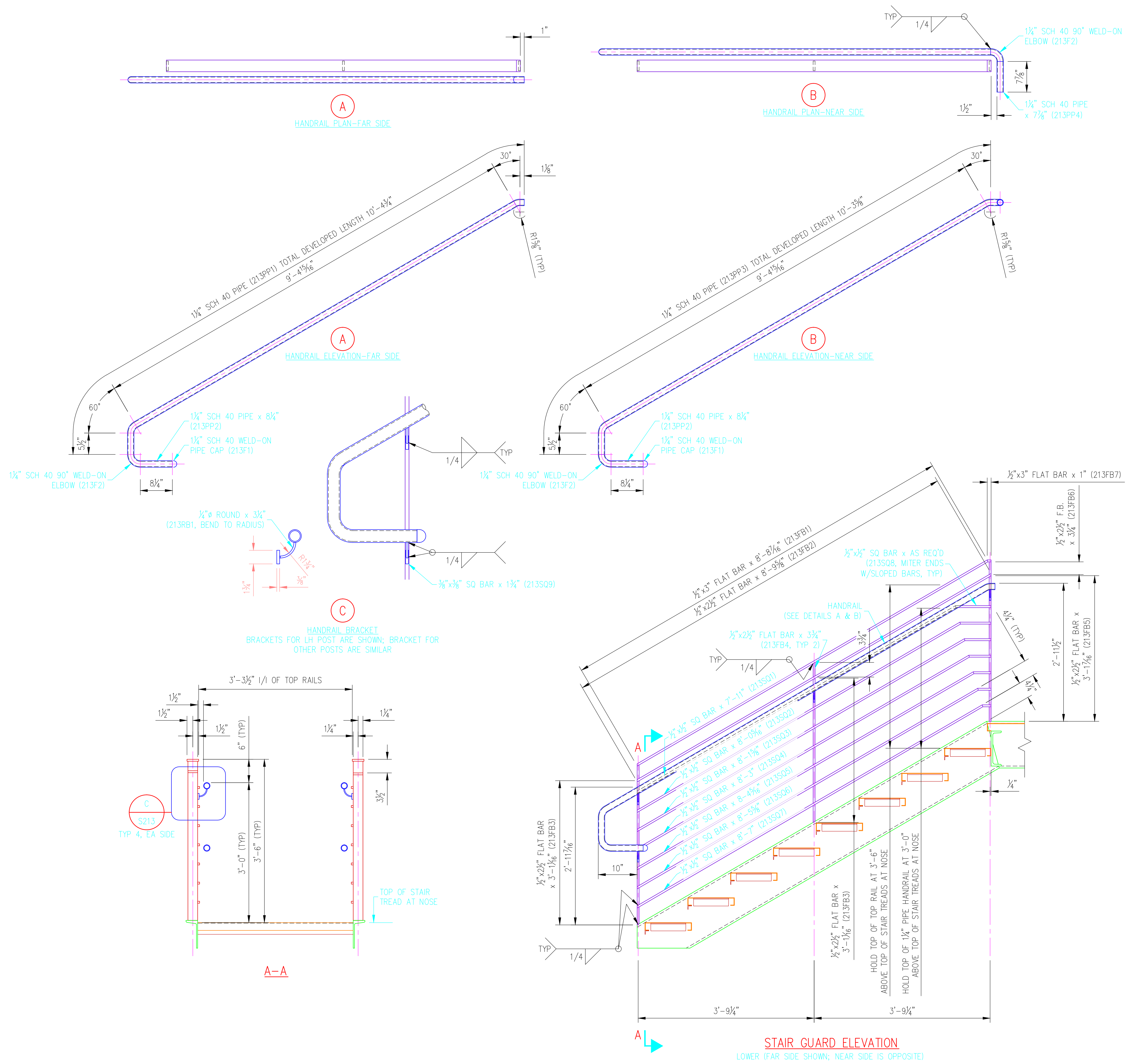


©2014 ANDY'S BEST CAB. ALL RIGHTS RESERVED. THIS DRAWING IS THE PROPERTY OF ANDY'S BEST CAB AND IS PROTECTED BY COPYRIGHT LAWS OF THE UNITED STATES OF AMERICA. ANY UNAUTHORIZED USE OF THE INFORMATION CONTAINED HEREIN OR PART THEREOF IS STRICTLY PROHIBITED. RECEIPT OR POSSESSION THEREOF DOES NOT CONFER OR TRANSFER ANY RIGHT TO MAKE, COPY, MANUFACTURE AND/OR SELL EITHER THE DRAWING OR THE ITEMS SHOWN THEREIN.



BILL OF MATERIAL					
MARK	QTY	DESCRIPTION	FT	IN	REMARKS
SG-LV1-L					
2 STAIR 2-STAIR GUARD-LEVEL 1-LOWER					
213FB1	2	1/2"x3" FLAT BAR	8	8 1/8	
213FB2	2	1/2"x2 1/2" FLAT BAR	8	9 3/8	
213FB3	4	1/2"x2 1/2" FLAT BAR	3	1 1/8	
213FB4	4	1/2"x2 1/2" FLAT BAR	0	3 3/4	
213FB5	2	1/2"x2 1/2" FLAT BAR	3	1 1/8	
213FB6	2	1/2"x2 1/2" FLAT BAR	0	3 3/4	
213FB7	2	1/2"x3" FLAT BAR	0	1	
213SQ1	2	1/2"x1/2" SQUARE BAR	7	11	
213SQ2	2	1/2"x1/2" SQUARE BAR	8	0 3/8	
213SQ3	2	1/2"x1/2" SQUARE BAR	8	1 5/8	
213SQ4	2	1/2"x1/2" SQUARE BAR	8	3	
213SQ5	2	1/2"x1/2" SQUARE BAR	8	4 1/8	
213SQ6	2	1/2"x1/2" SQUARE BAR	8	5 3/8	
213SQ7	2	1/2"x1/2" SQUARE BAR	8	7	
213SQ8	2	1/2"x1/2" SQUARE BAR	-	-	LENGTHS AS REQ'D
213PP1	1	1 1/4" SCH 40 PIPE	10	4 3/4	
213PP2	2	1 1/4" SCH 40 PIPE	0	8 1/4	
213PP3	1	1 1/4" SCH 40 PIPE	10	3 3/8	
213PP4	1	1 1/4" SCH 40 PIPE	0	7 3/8	
213SQ9	8	3/8"x3/8" SQUARE BAR	0	1 3/4	
213RB1	8	1/4" ROUND BAR	0	3 3/4	
213F1	2	1 1/4" SCH 40 PIPE CAP	-	-	WELD-ON
213F2	3	1 1/4" SCH 40 90° ELBOW	-	-	WELD-ON
ALL SIZES SHOWN ARE FOR FINISHED MATERIALS					

NOT FOR CONSTRUCTION- FOR CLIENT REVIEW ONLY
08/22/14

MATERIAL, COATING & FABRICATION SPECIFICATIONS	
MATERIALS & FABRICATION	COATINGS
ROLLED W SHAPES: ASTM A992	STEEL STAIR STRINGERS, LANDINGS, VERTICAL COLUMN, STAIR GUARDS, HANDRAILS, RAILINGS AND MISCELLANEOUS STEEL SHALL BE HOT-DIP GALVANIZED AFTER FABRICATION PER ASTM A123. STAIR TREADS AND LANDING DECK PLANKS SHALL BE PRE-GALVANIZED. SURFACES IN CONTACT WITH CONCRETE SHALL NOT BE COATED.
ROLLED CHANNELS, ANGLES, S, ST, M, HP AND WT SHAPES: ASTM A36	
HSS TUBES: ASTM A500, GR. B	
PLATES AND BARS: ASTM A36	
PIPES: ASTM A53, GR. B, SCH. 40, BLACK	
FASTENERS: ASTM 325N	
SURFACE PREP: SSPC-SP2	
WELDING MATERIALS: AWS D1.1 (E70XX-LOW HYDROGEN ELECTRODES)	DO NOT SCALE DRAWINGS. ALL DIMENSIONS IN FT & IN UNLESS NOTED OTHERWISE.

DATE:	
REV:	
REVISION DESCRIPTION:	
DRAWN:	ABC
DESIGNED:	-
CLIENT:	08/22/14
DATE:	1"=1'-0"
SCALE:	
PROJECT NAME:	STAIR GUARD LEVEL 1 LOWER
PROJECT ADDRESS:	EXTERIOR STAIRS/STAIR 2
SHOP DRAWINGS:	
DRAWING NO.:	S213
OF:	08