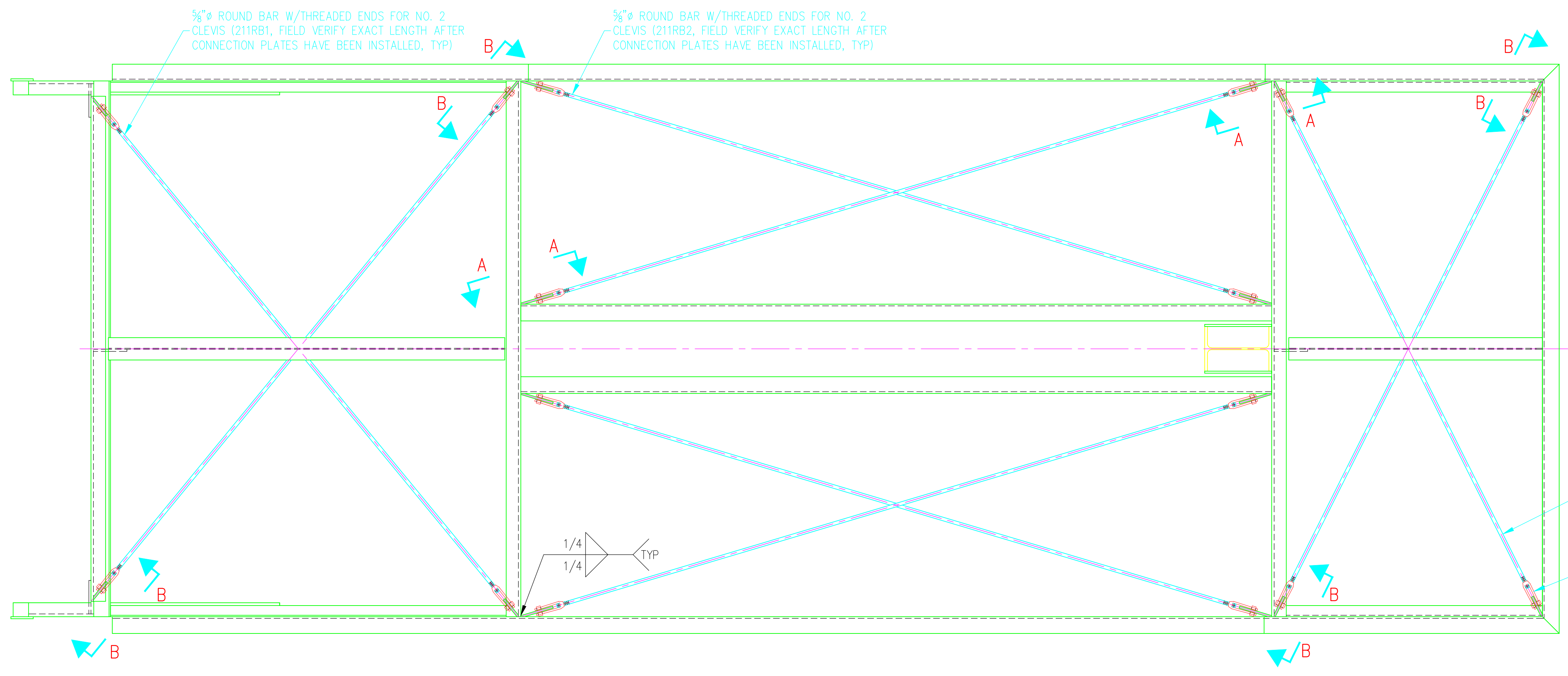
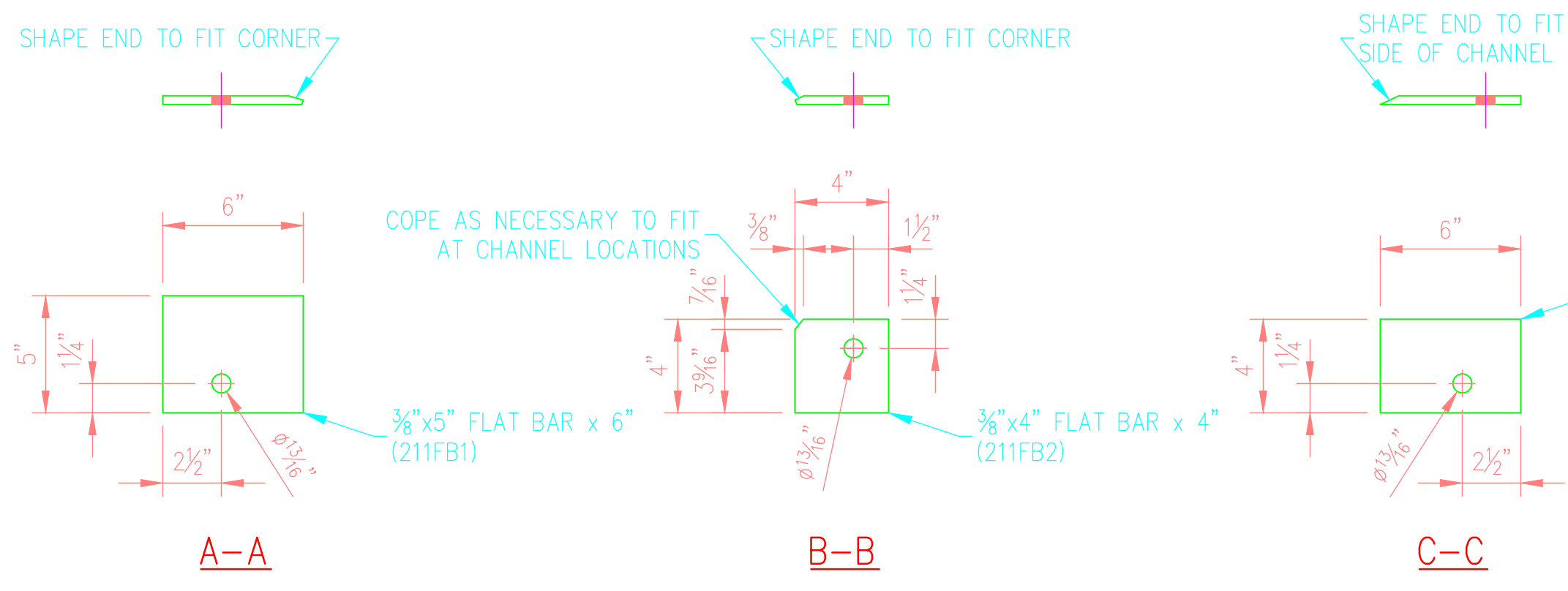


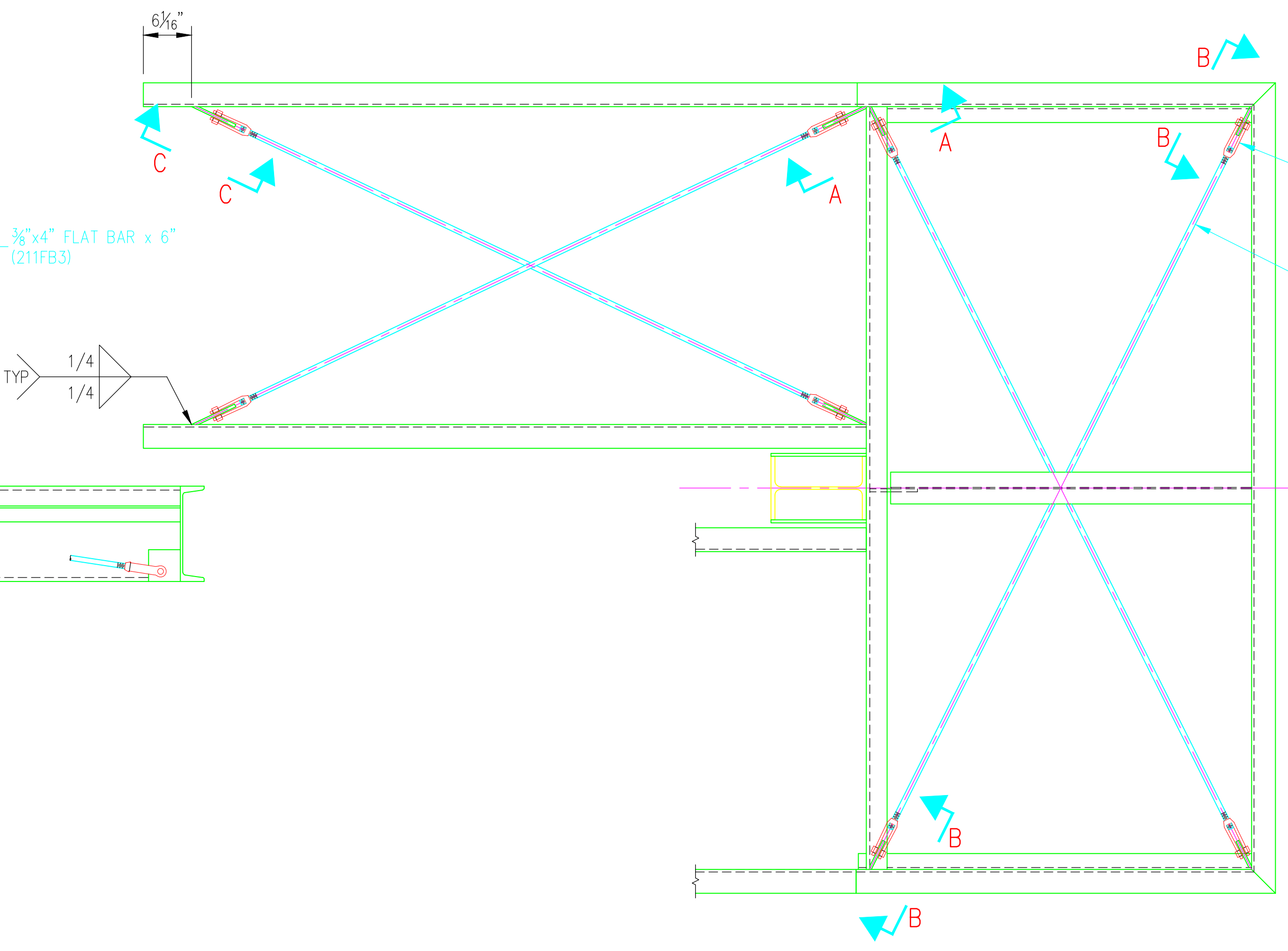
©2014 ANDY'S BEST CAB. ALL RIGHTS RESERVED. THIS DRAWING IS THE PROPERTY OF ANDY'S BEST CAB AND IS PROTECTED BY COPYRIGHT LAWS OF THE UNITED STATES OF AMERICA. ANY UNAUTHORIZED USE OF THE INFORMATION CONTAINED HEREIN OR PART THEREOF IS STRICTLY PROHIBITED. RECEIPT OF POSSESSION THEREOF DOES NOT CONVEY OR TRANSFER ANY RIGHT TO MAKE, COPY, MANUFACTURE AND/OR SELL EITHER THE DRAWING OR THE ITEMS SHOWN THEREIN.



PLAN
LEVELS 2 & 3 CROSS-BRACING



ELEVATION
LEVEL 1 CROSS-BRACING;
LEVELS 2 & 3 ARE SIMILAR (SEE SHT S212)



PLAN
LEVEL 1 CROSS-BRACING

BILL OF MATERIAL					
MARK	QTY	DESCRIPTION	FT	IN	REMARKS
SS2-CB-L123	1	STAIR STRUCTURE 2-CROSS BRACING-LEVELS 1,2,3			
211FB1	18	3/8" x 5"	0	6	
211FB2	20	3/8" x 4"	0	4	
211FB3	2	3/8" x 4"	0	6	
211RB1	4	5/8" Ø ROUND BAR	-	-	FIELD VERIFY LENGTH
211RB2	8	5/8" Ø ROUND BAR	-	-	FIELD VERIFY LENGTH
211RB3	2	5/8" Ø ROUND BAR	-	-	FIELD VERIFY LENGTH
211RB4	6	5/8" Ø ROUND BAR	-	-	FIELD VERIFY LENGTH
211CL1	40	NO. 2 CLEVIS & 3/4" Ø PIN	-	-	GALV

ALL SIZES SHOWN ARE FOR FINISHED MATERIALS

5/8" Ø ROUND BAR W/THREADED ENDS FOR NO. 2 CLEVIS (211RB4, FIELD VERIFY EXACT LENGTH AFTER CONNECTION PLATES HAVE BEEN INSTALLED, TYP)

NO. 2 CLEVIS & 3/4" Ø PIN (211CL1, TYP)

NO. 2 CLEVIS & 3/4" Ø PIN (211CL1, TYP)

5/8" Ø ROUND BAR W/THREADED ENDS FOR NO. 2 CLEVIS (211RB4, FIELD VERIFY EXACT LENGTH AFTER CONNECTION PLATES HAVE BEEN INSTALLED, TYP)

NOT FOR CONSTRUCTION-FOR CLIENT REVIEW ONLY
08/22/14

MATERIAL, COATING & FABRICATION SPECIFICATIONS	
MATERIALS & FABRICATION	COATINGS
ROLLED W SHAPES: ASTM A992	STEEL STAIR STRINGERS, LANDINGS, VERTICAL COLUMN, STAIR GUARDS, HANDRAILS, RAILINGS AND MISCELLANEOUS STEEL SHALL BE HOT-DIP GALVANIZED AFTER FABRICATION PER ASTM A123. STAIR TREADS AND LANDING DECK PLANKS SHALL BE PRE-GALVANIZED. SURFACES IN CONTACT WITH CONCRETE SHALL NOT BE COATED.
ROLLED CHANNELS, ANGLES, S, ST, M, HP AND WT SHAPES: ASTM A36	
HSS TUBES: ASTM A500, GR. B	
PLATES AND BARS: ASTM A36	
PIPES: ASTM A53, GR. B, SCH. 40, BLACK	
FASTENERS: ASTM 325N	
SURFACE PREP: SSPC-SP2	DO NOT SCALE DRAWINGS. ALL DIMENSIONS IN FT & IN UNLESS NOTED OTHERWISE.
WELDING MATERIALS: AWS D1.1 (E70XX-LOW HYDROGEN ELECTRODES)	

DATE: _____

REV / REVISION DESCRIPTION: _____

DRAWN: ABC
DESIGNED: -
CLIENT: -
DATE: 08/22/14
SCALE: 1"=1'-0"

PROJECT NAME: EXTERIOR STAIRS/STAIR 2
PROJECT ADDRESS: SHOP DRAWINGS

DRAWING TITLE: STAIR STRUCTURE 2 LEVELS 1,2,3 CROSS BRACING

DRAWING NO.: S211
OF