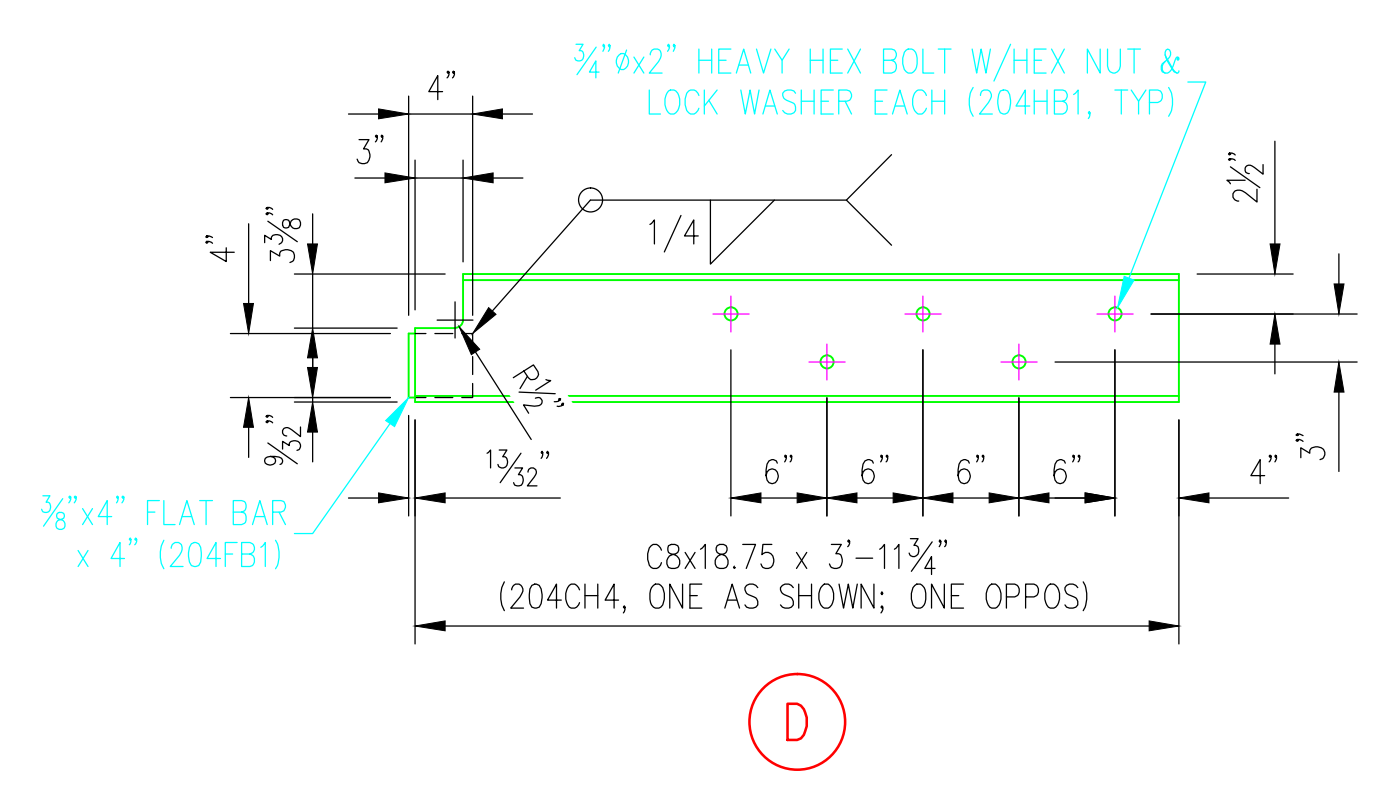
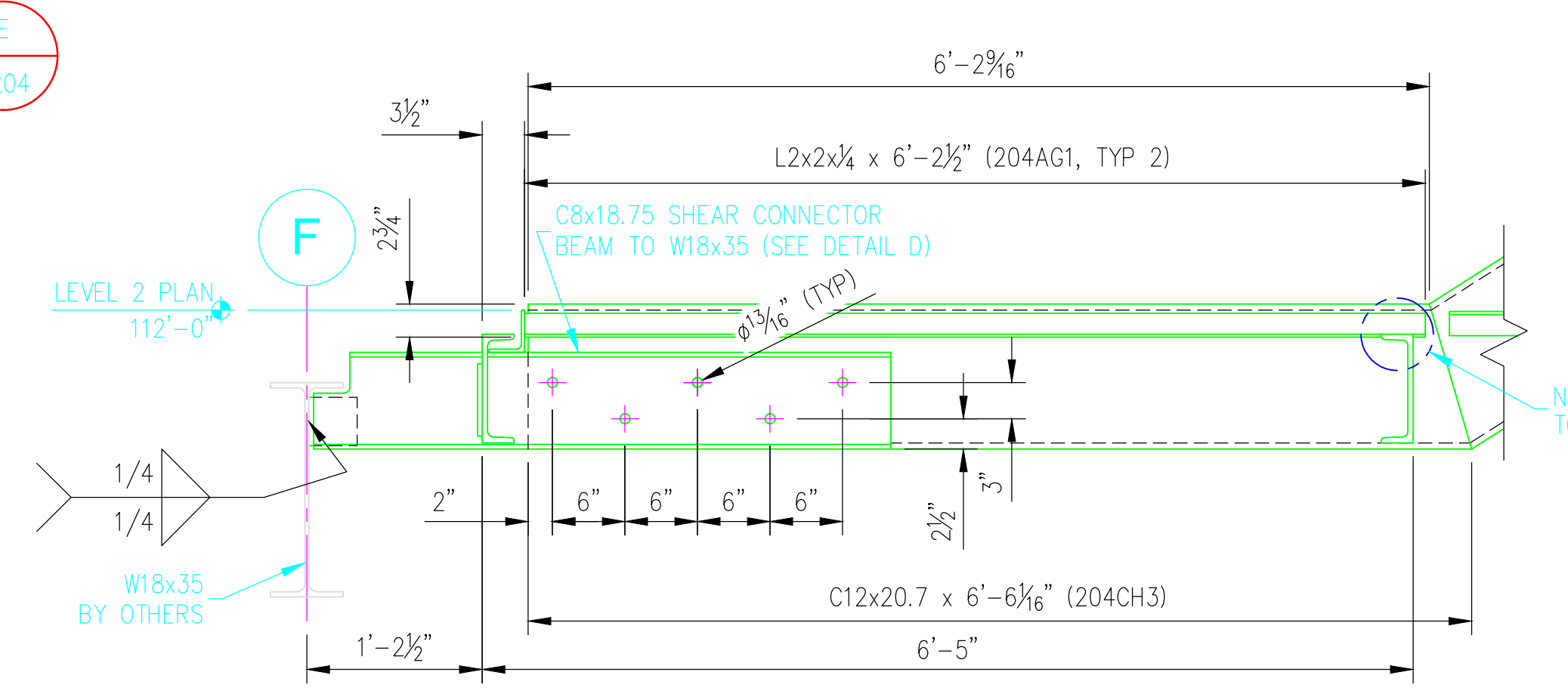
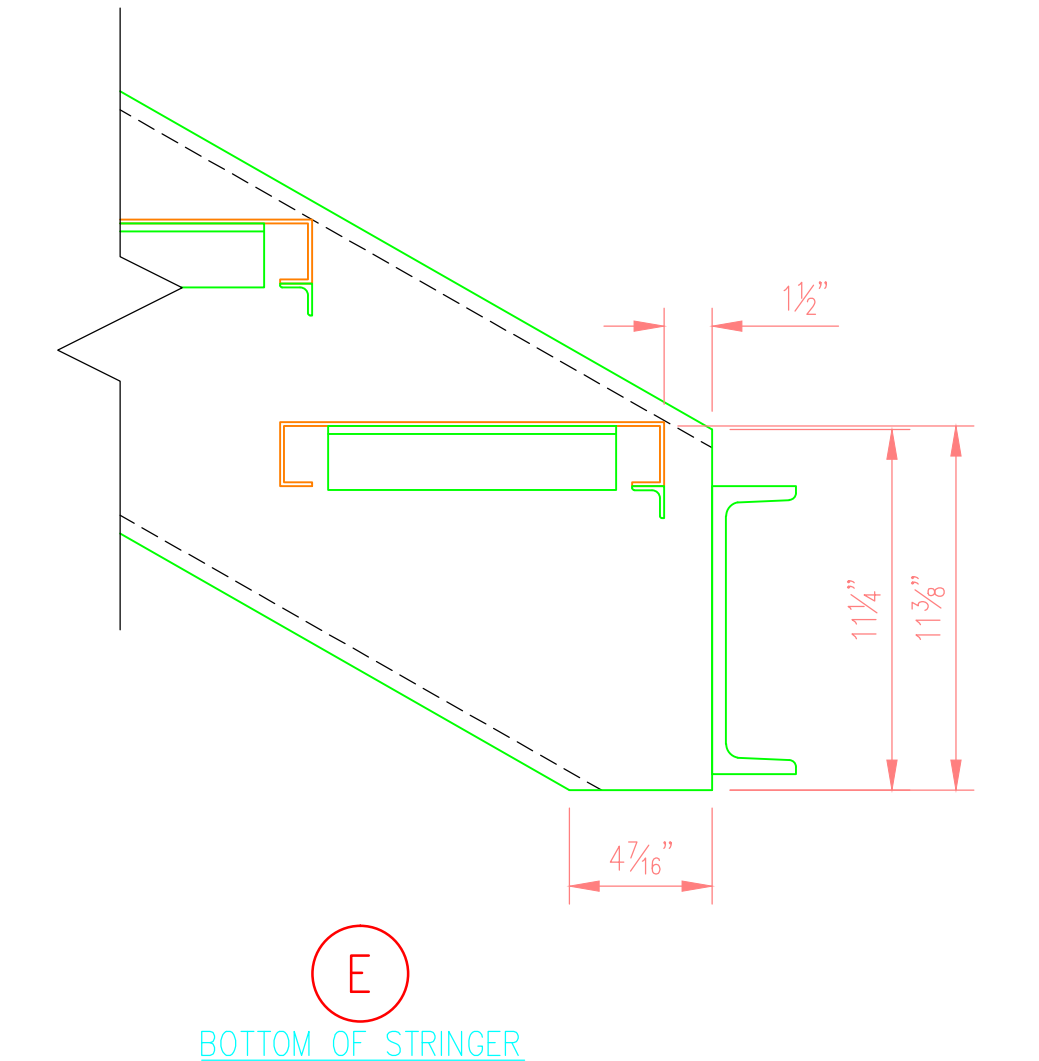
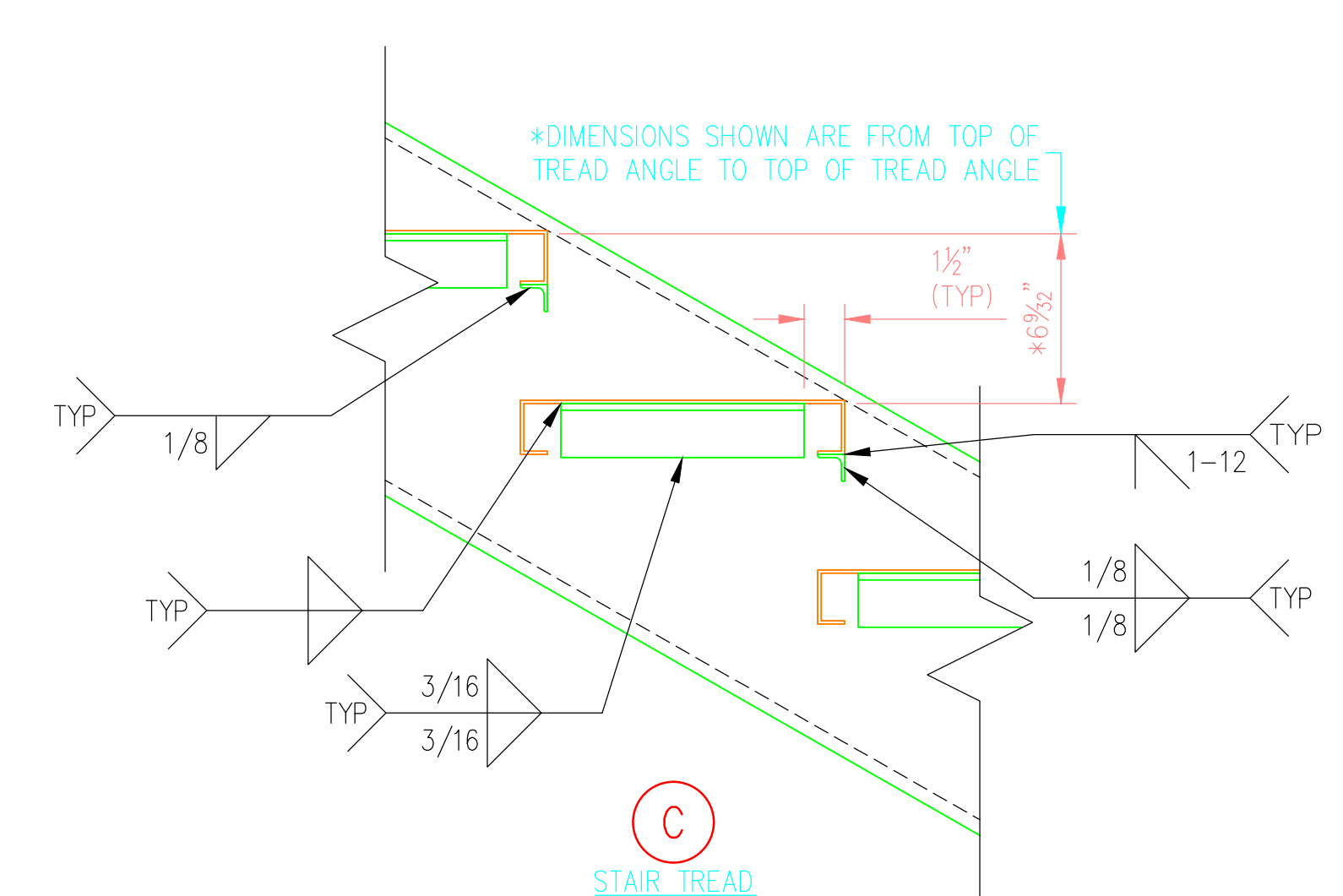
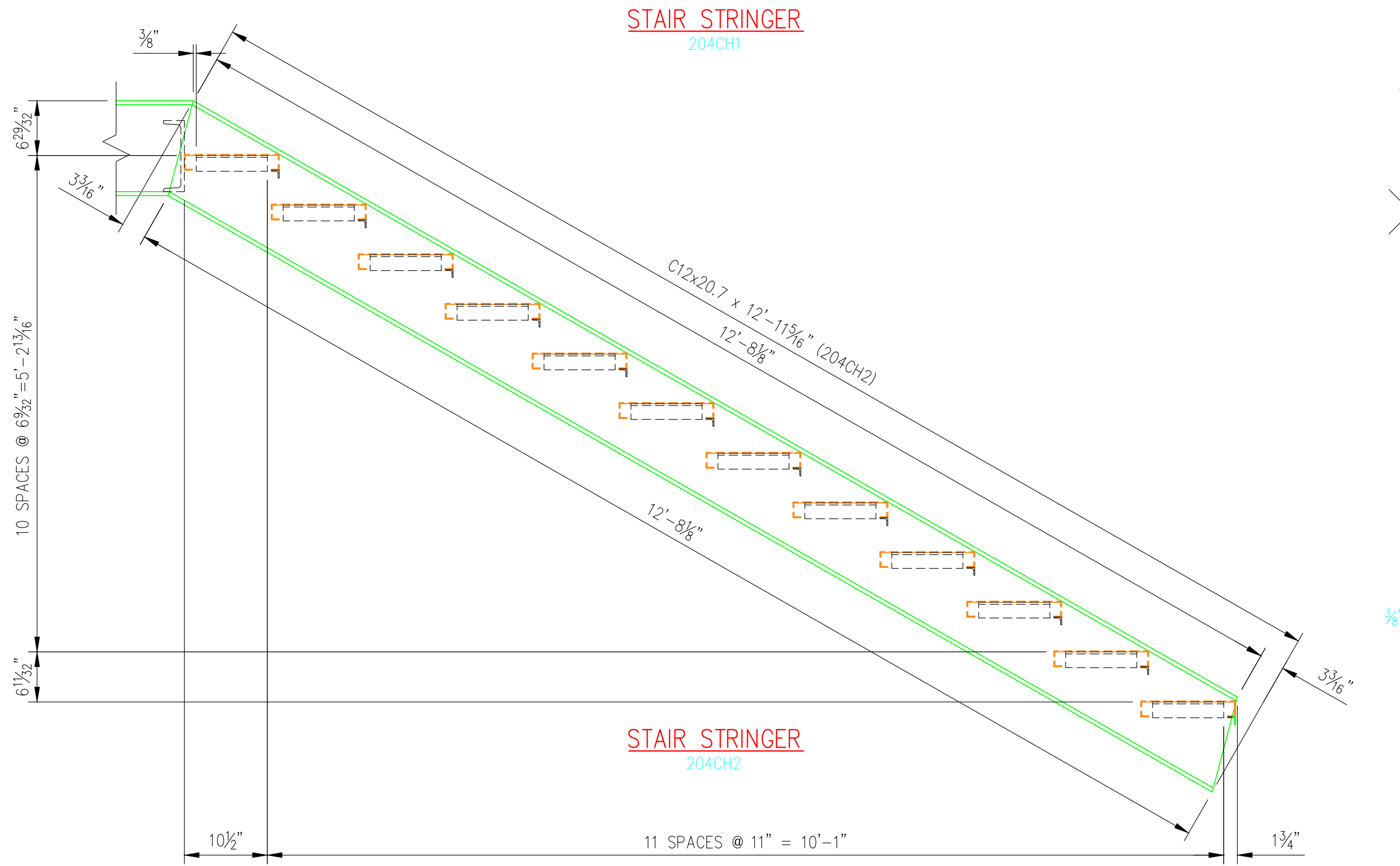
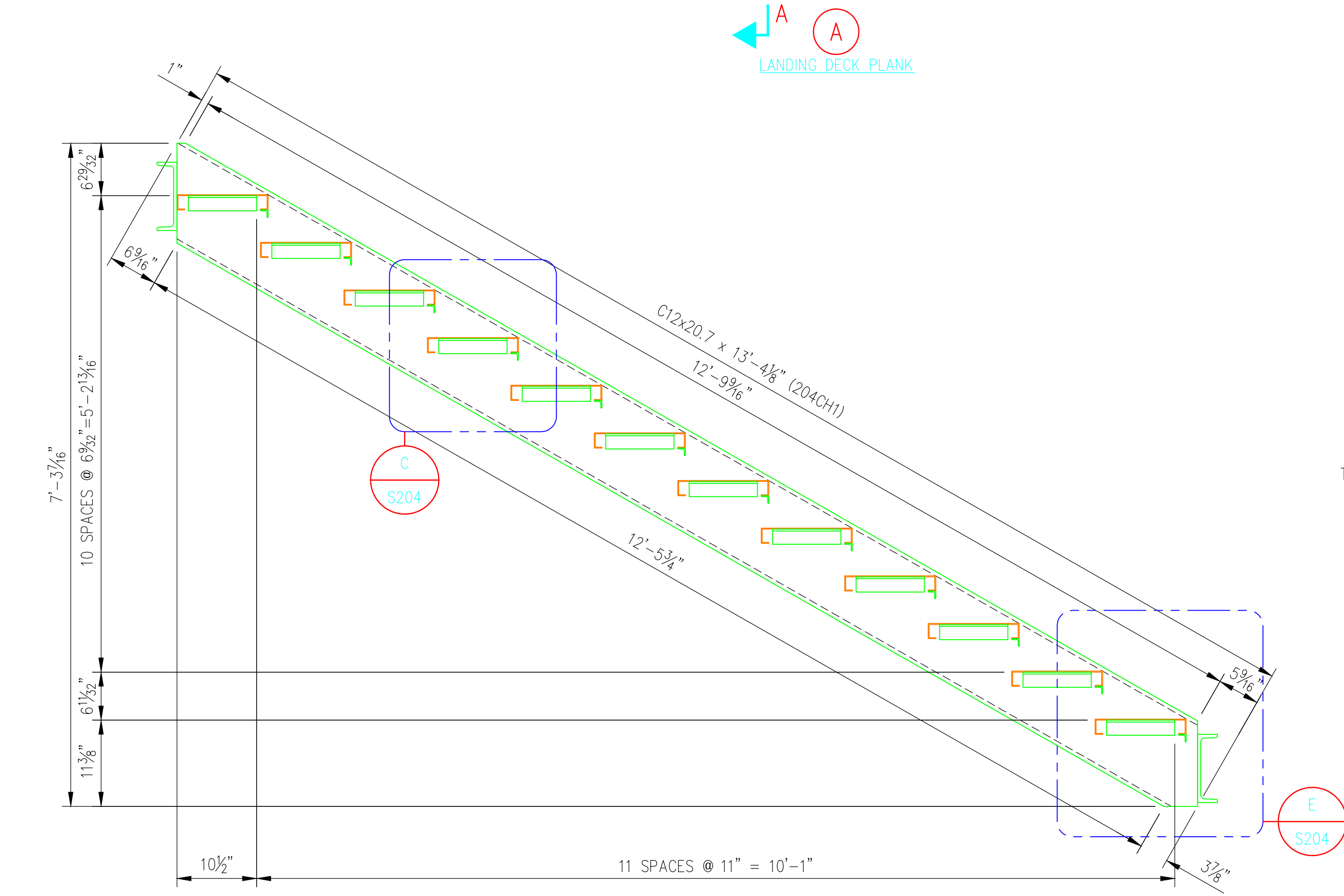
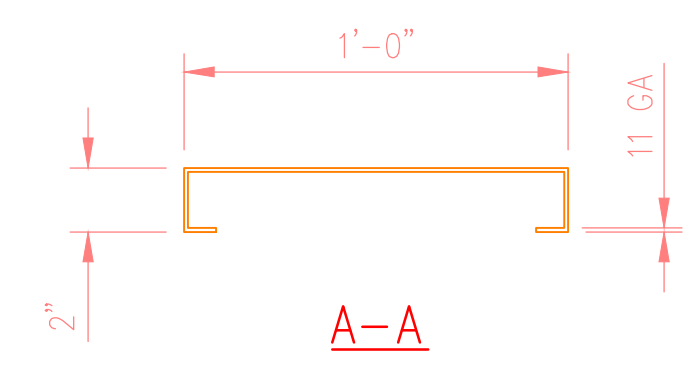
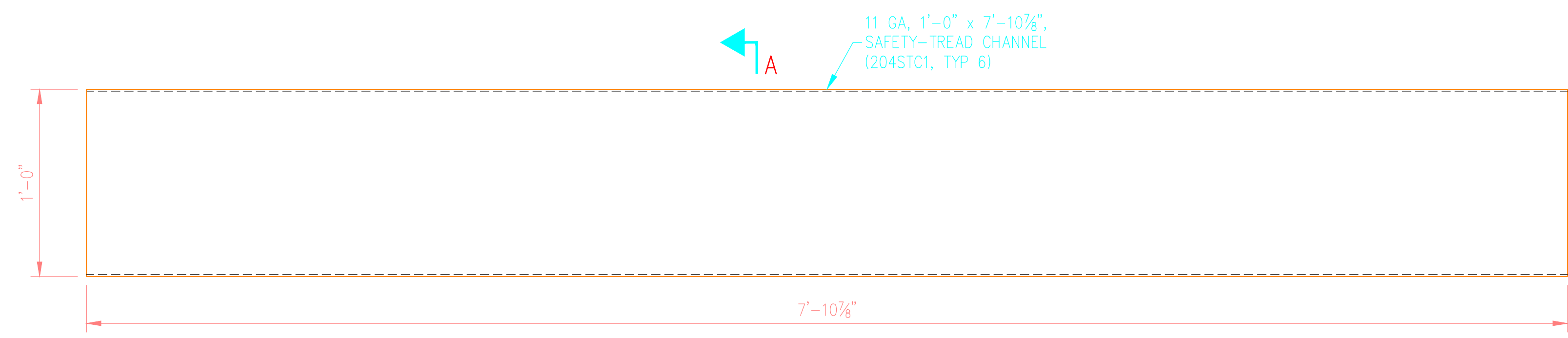


© 2014 ANDY'S BEST CAD. ALL RIGHTS RESERVED. THIS DRAWING IS THE PROPERTY OF ANDY'S BEST CAD AND IS PROTECTED BY COPYRIGHT LAWS OF THE UNITED STATES OF AMERICA. ANY UNAUTHORIZED USE OF THE INFORMATION CONTAINED HEREIN OR PART THEREOF IS STRICTLY PROHIBITED. RECEIPT OF POSSESSION THEREOF DOES NOT CONFER OR TRANSFER ANY RIGHT TO MAKE, COPY, MANUFACTURE AND/OR SELL EITHER THE DRAWING OR THE ITEMS SHOWN THEREIN.



BILL OF MATERIAL					
MARK	QTY	DESCRIPTION	FT	IN	REMARKS
SS2-LVL1-US	1	STAIR STRUCTURE 2-LEVEL 1-UPPER STRINGERS			
204CH1	1	C12x20.7	13	4 3/8	
204CH2	1	C12x20.7	12	11 3/16	
204CH3	1	C12x20.7	6	6 1/8	
204CH4	2	C8x18.75	3	11 1/4	
204AG1	2	L2x2x1/4	6	2 1/2	
204FB1	1	3/8" x 4" FLAT BAR	0	4	
204STC1	6	11 GA, 1'-0" WIDE, 2" DEEP SAFETY-TREAD CHANNEL	7	10 1/2	PRE-GALV
204HB1	10	3/4" x 2" HEAVY HEX BOLT, HEX NUT & LOCK WASHER EA (GALV)			

ALL SIZES SHOWN ARE FOR FINISHED MATERIALS

NOT FOR CONSTRUCTION-FOR CLIENT REVIEW ONLY
08/22/14

GENERAL NOTES	
1. ALL STRUCTURAL STEEL CONNECTIONS ON THESE SHOP DRAWINGS SHALL REQUIRE REVIEW AND APPROVAL BY THE ENGINEER.	
MATERIAL, COATING & FABRICATION SPECIFICATIONS	
MATERIALS & FABRICATION	COATINGS
ROLLED W SHAPES: ASTM A992	STEEL STAIR STRINGERS, LANDINGS, VERTICAL COLUMN, STAIR GUARDS, HANDRAILS, RAILINGS AND MISCELLANEOUS STEEL SHALL BE HOT-DIP GALVANIZED AFTER FABRICATION PER ASTM A123. STAIR TREADS AND LANDING DECK PLANKS SHALL BE PRE-GALVANIZED. SURFACES IN CONTACT WITH CONCRETE SHALL NOT BE COATED.
ROLLED CHANNELS, ANGLES, S, ST, M, HP AND WT SHAPES: ASTM A36	
HSS TUBES: ASTM A500, GR. B	
PLATES AND BARS: ASTM A36	
PIPES: ASTM A53, GR. B, SCH. 40, BLACK	
FASTENERS: ASTM 325N	
SURFACE PREP: SSPC-SP2	
WELDING MATERIALS: AWS D.1.1 (E70XX-LOW HYDROGEN ELECTRODES)	DO NOT SCALE DRAWINGS. ALL DIMENSIONS IN FT & IN UNLESS NOTED OTHERWISE.

DATE: _____

REV# REVISION DESCRIPTION: _____

DRAWN: ABC
DESIGNED: -
CLIENT: -
DATE: 08/22/14
SCALE: 1"=1'-0"

PROJECT NAME: STAIR STRUCTURE 2
PROJECT ADDRESS: LEVEL 1-UPPER STRINGER & LANDING DETAILS
EXTERIOR STAIRS/STAIR 2 SHOP DRAWINGS

DRAWING NO.: S204
OF 0