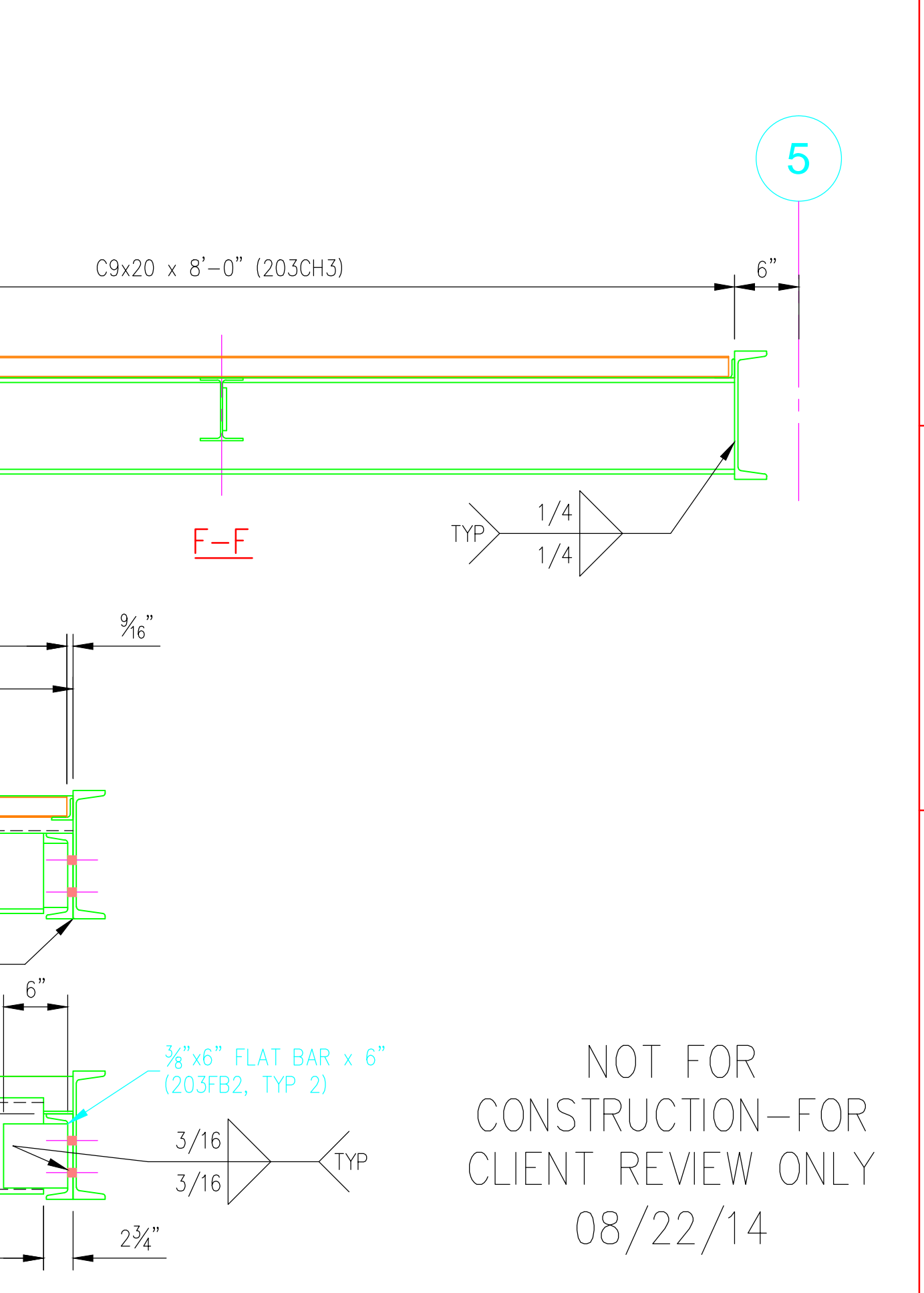
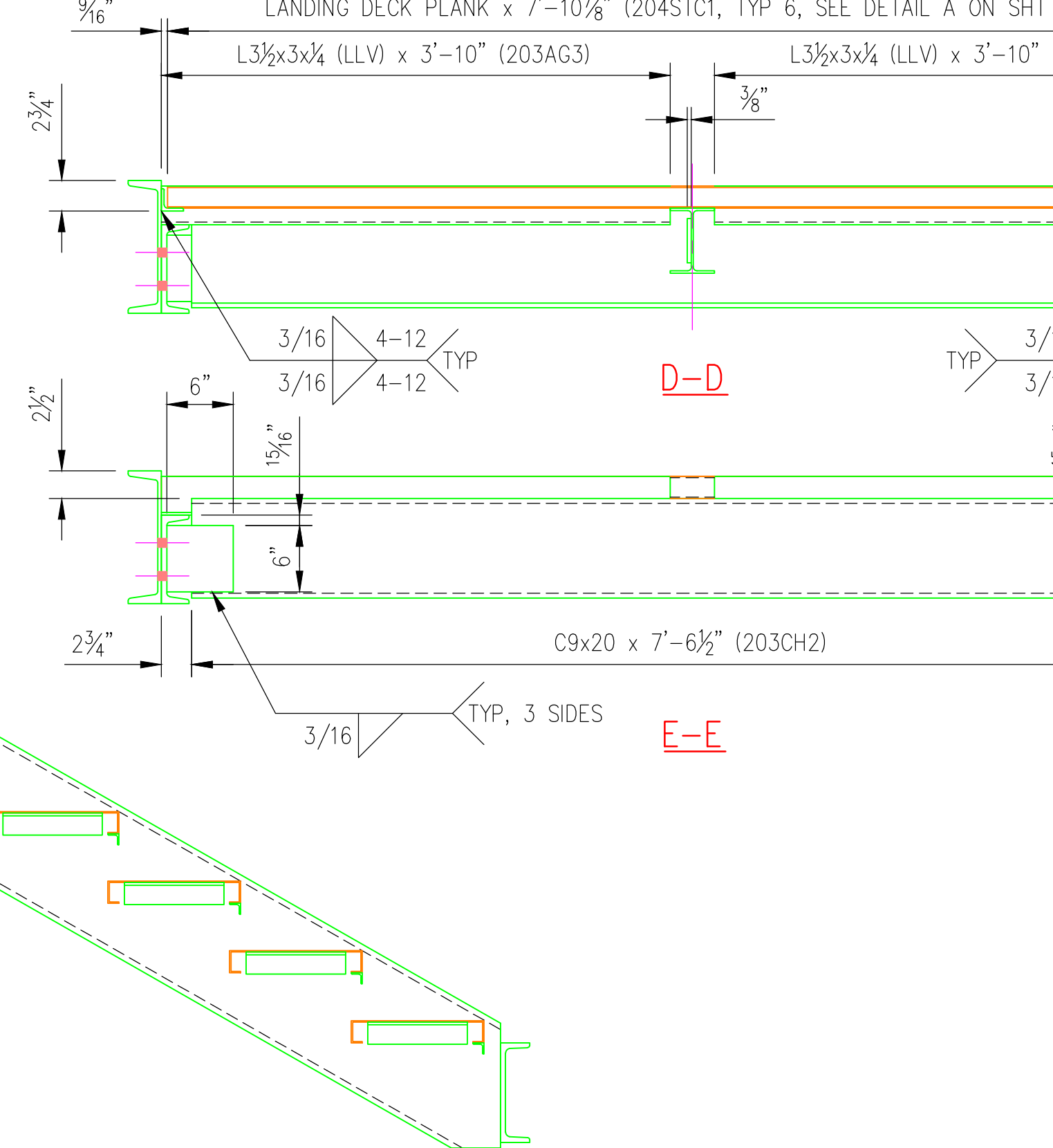
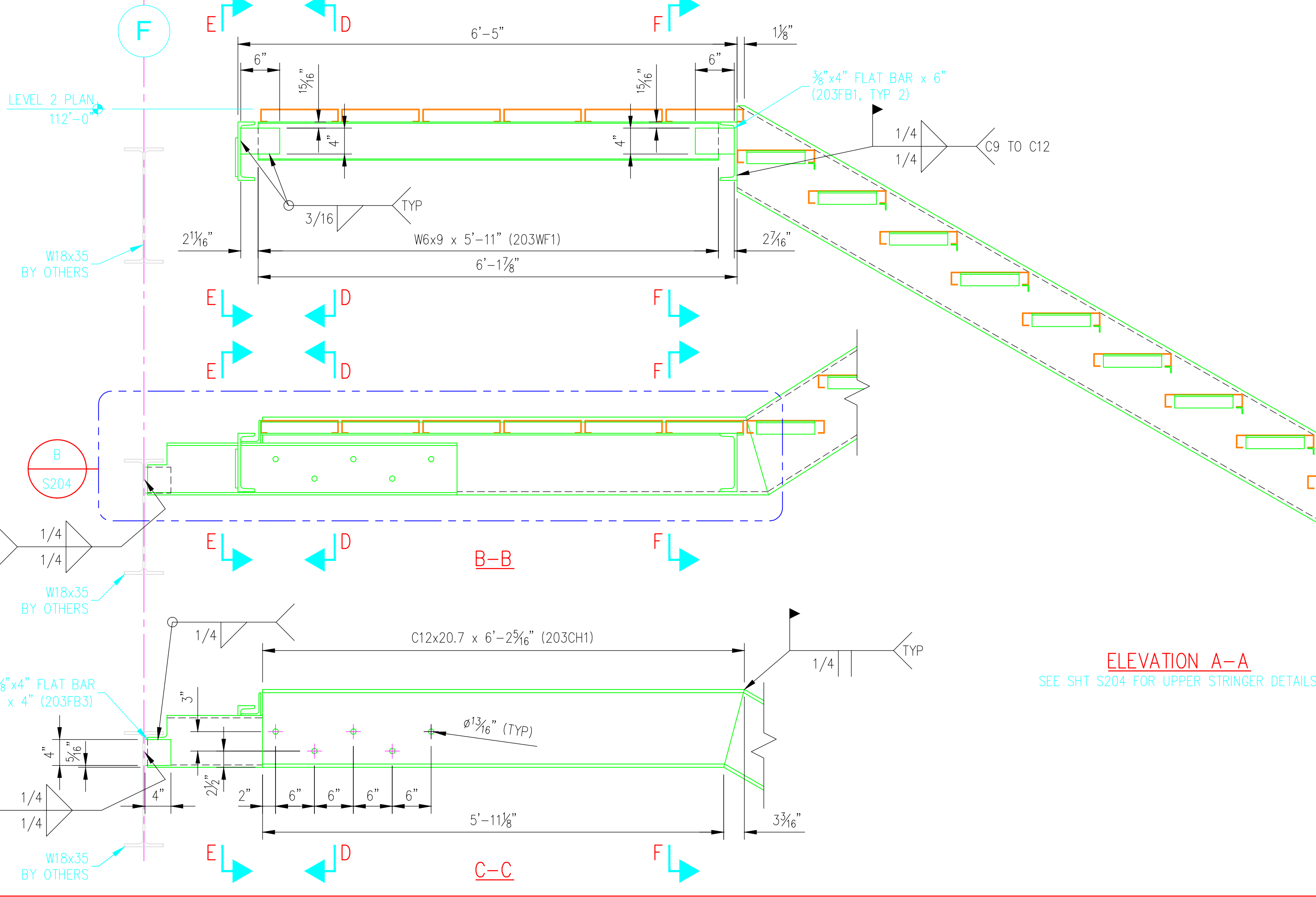


BILL OF MATERIAL					
MARK	QTY	DESCRIPTION	FT	IN	REMARKS
SS2-LVL1-U	1	STAIR STRUCTURE 2-LEVEL 1-UPPER			
203CH1	1	C12x20.7	6	2 5/8	
203CH2	1	C9x20	7	6 1/2	
203CH3	1	C9x20	8	0	
203WF1	1	W6x9	5	11	
203AG1	24	L2x2 1/4	0	9	
203AG2	12	L1x1 1/2	3	4	
203AG3	2	L3 1/2 x 3 1/4	3	10	
203FB1	2	3/8" x 4" FLAT BAR	0	6	
203FB2	2	3/8" x 6" FLAT BAR	0	6	
203FB3	1	3/8" x 4" FLAT BAR	0	4	
203STC1	12	11 GA, 1'-0" WIDE, 2" DEEP SAFETY-TREAD CHANNEL	3	4	PRE-GALV

ALL SIZES SHOWN ARE FOR FINISHED MATERIALS



GENERAL NOTES	
1. ALL STRUCTURAL STEEL CONNECTIONS ON THESE SHOP DRAWINGS SHALL REQUIRE REVIEW AND APPROVAL BY THE ENGINEER.	
MATERIAL, COATING & FABRICATION SPECIFICATIONS	
MATERIALS & FABRICATION	COATINGS
ROLLED W SHAPES: ASTM A992	STEEL STAIR STRINGERS, LANDINGS, VERTICAL COLUMN, STAIR GUARDS, HANDRAILS, RAILINGS AND MISCELLANEOUS STEEL SHALL BE HOT-DIP GALVANIZED AFTER FABRICATION PER ASTM A123. STAIR TREADS AND LANDING DECK PLANKS SHALL BE PRE-GALVANIZED. SURFACES IN CONTACT WITH CONCRETE SHALL NOT BE COATED.
ROLLED CHANNELS, ANGLES, S, ST, M, HP AND WT SHAPES: ASTM A36	
HSS TUBES: ASTM A500, GR. B	
PLATES AND BARS: ASTM A36	
PIPES: ASTM A53, GR. B, SCH. 40, BLACK	
FASTENERS: ASTM 325N	
SURFACE PREP: SSPC-SP2	
WELDING MATERIALS: AWS D1.1 (E70XX-LOW HYDROGEN ELECTRODES)	DO NOT SCALE DRAWINGS. ALL DIMENSIONS IN FT & IN UNLESS NOTED OTHERWISE.

DATE: _____

REV# REVISION DESCRIPTION:

ABC - 08/22/14

1" = 1'-0"

DRAWN: ABC

DESIGNED: -

CLIENT: -

DATE: 08/22/14

SCALE: 1" = 1'-0"

PROJECT NAME: STAIR STRUCTURE 2

PROJECT ADDRESS: LEVEL 1-UPPER STRINGERS & LEVEL 2 LANDING

PROJECT: EXTERIOR STAIRS/STAIR 2

DRAWING NO.: S203 OF

©2014 ANDY'S BEST CAD. ALL RIGHTS RESERVED. THIS DRAWING IS THE PROPERTY OF ANDY'S BEST CAD AND IS PROTECTED BY COPYRIGHT LAWS OF THE UNITED STATES OF AMERICA. ANY UNAUTHORIZED USE OF THE INFORMATION CONTAINED HEREIN OR PART THEREOF IS STRICTLY PROHIBITED. RECEIPT OR POSSESSION THEREOF DOES NOT CONFER OR TRANSFER ANY RIGHT TO MAKE, COPY, MANUFACTURE AND/OR SELL EITHER THE DRAWING OR THE ITEMS SHOWN THEREIN.