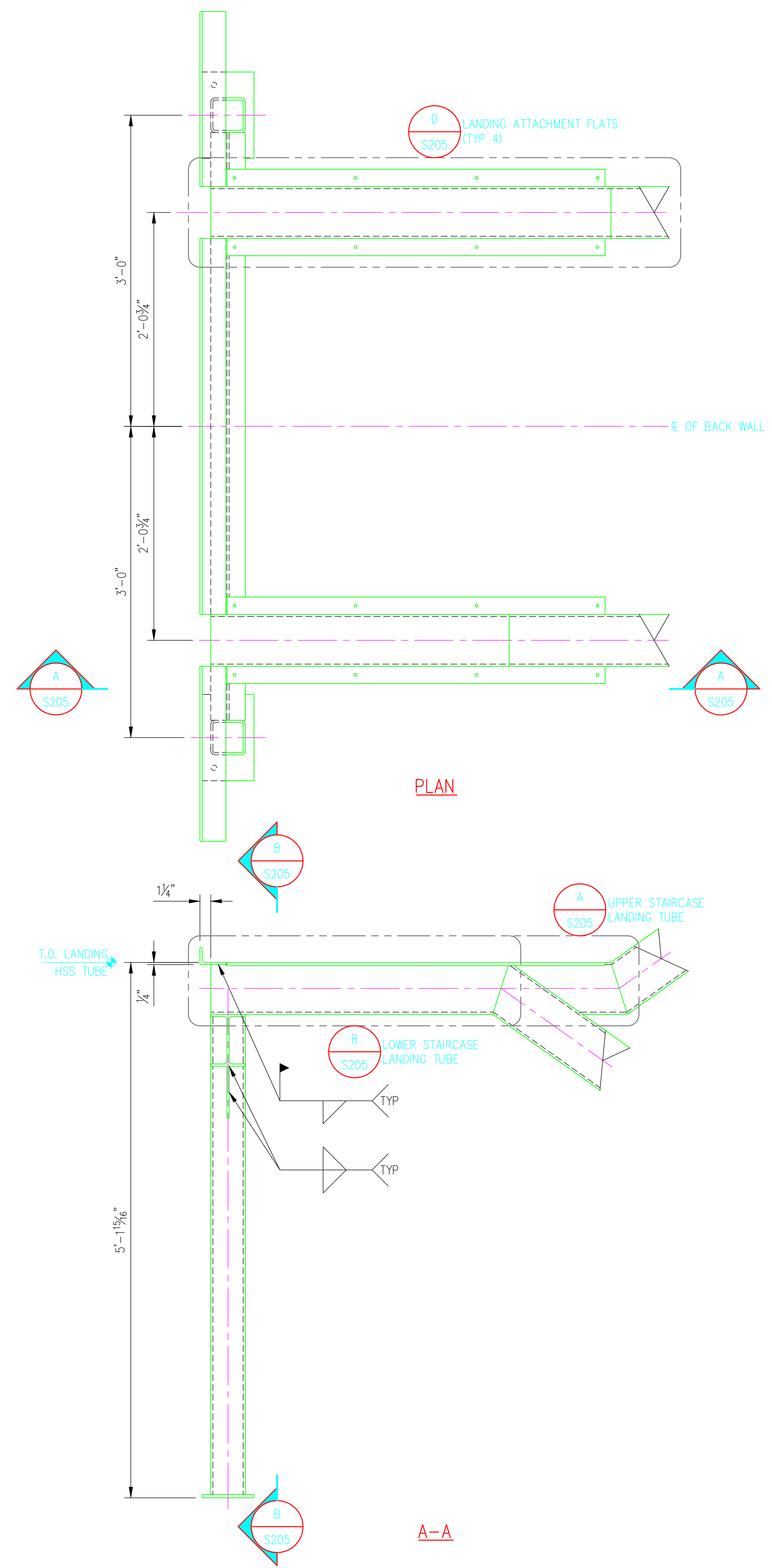
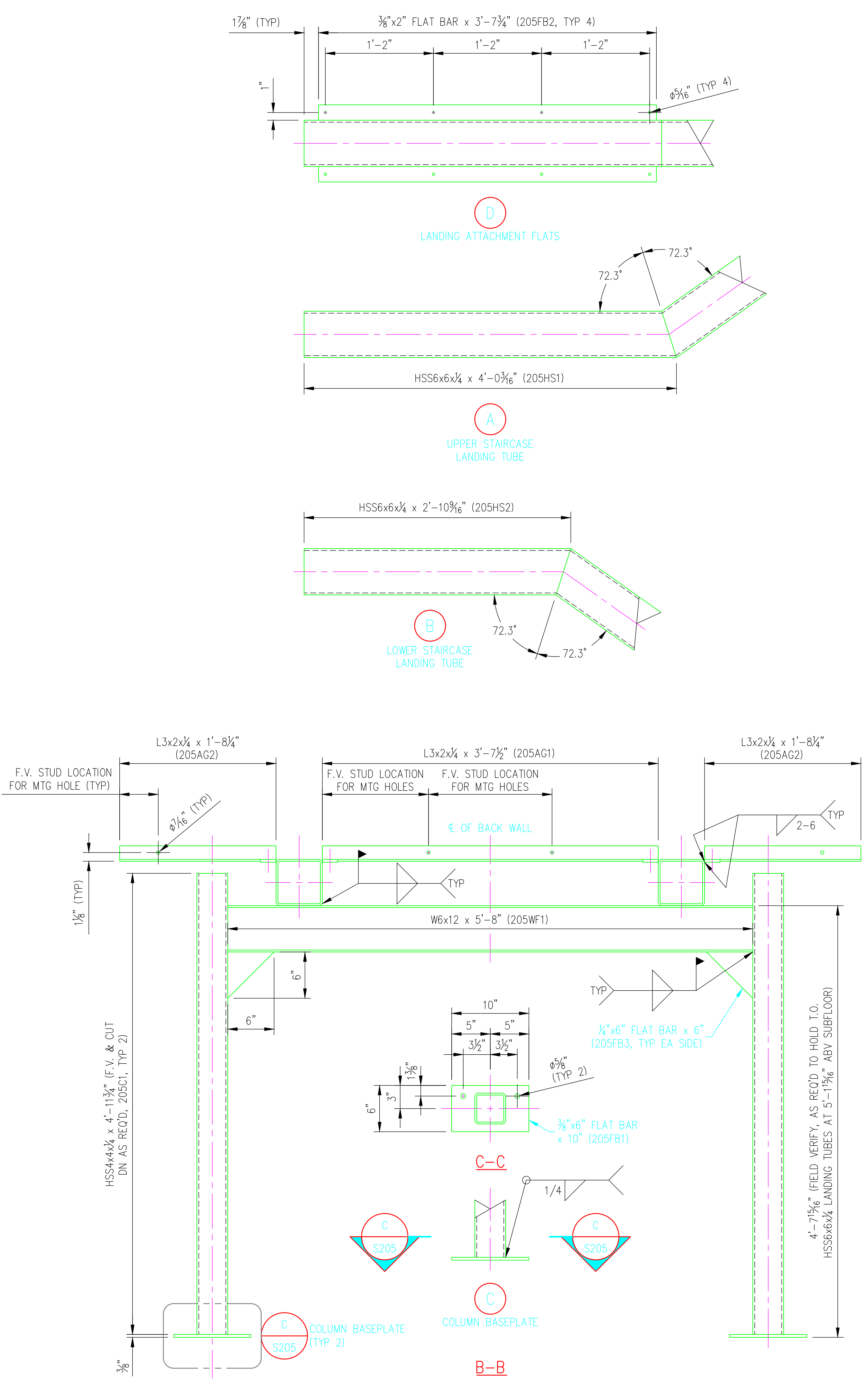


©2023 ANDY'S BEST CAD. ALL RIGHTS RESERVED. THIS DRAWING IS THE PROPERTY OF ANDY'S BEST CAD AND IS PROTECTED BY COPYRIGHT LAWS OF THE UNITED STATES OF AMERICA. ANY UNAUTHORIZED USE OF THE INFORMATION CONTAINED HEREIN OR PART THEREOF IS STRICTLY PROHIBITED. RECEIPT OR POSSESSION THEREOF DOES NOT CONFER OR TRANSFER ANY RIGHT TO MAKE, COPY, MANUFACTURE AND/OR SELL EITHER THE DRAWING OR THE ITEMS SHOWN THEREIN.



**PLAN**



**B-B**

**BILL OF MATERIAL**

MARK	QTY	DESCRIPTION	FT	IN	REMARKS
	1	MONORAIL STAIRCASE STRUCTURE			
205LDG	1	LANDING			
205HS1	1	HSS6x6x1/4	4	0 3/16	
205HS2	1	HSS6x6x1/4	2	10 1/16	
205C1	2	HSS4x4x1/4	4	11 1/4	
205FB1	2	3/8" x 6" FLAT BAR	0	10	
205WF1	1	W6x12	5	8	MIN BEAM SIZE
205AG1	1	L3x2x1/4	3	7 1/2	
205AG2	2	L3x2x1/4	1	8 1/4	
205FB2	4	3/8" x 2" FLAT BAR	3	7 3/4	
205FB3	2	1/4" x 6" FLAT BAR	0	6	CUT IN HALF DIAG

ALL SIZES SHOWN ARE FOR FINISHED MATERIALS

ANDY'S BEST CAD  
1323 CARLYLE PARK CIRCLE  
HIGHLANDS RANCH, CO 80129  
303-808-3352  
WWW.ANDYSBESTCAD.COM

DRAWN: ABC  
DESIGNED:  
CLIENT: 01/18/23  
DATE: AS SHOWN  
SCALE:

MONORAIL STAIRCASE  
DENVER, COLORADO  
STRUCTURAL STEEL  
SHOP DRAWINGS

FOR FABRICATION  
01/18/23

**MATERIAL, COATING & FABRICATION SPECIFICATIONS**

MATERIALS & FABRICATION	COATINGS
ROLLED W SHAPES: ASTM A572	PRIME & PAINT STEEL AFTER FABRICATION
ROLLED CHANNELS, ANGLES, PLATES: ASTM A572	
HSS TUBES: ASTM A500, GRADE B	
PIPES: ASTM A53, GRADE B	
HEADED ANCHOR STUDS: ASTM A108	
FASTENERS: ASTM A325 OR A490	
SURFACE PREP: SSPC-SP6	DO NOT SCALE DRAWINGS. ALL DIMENSIONS IN FT & IN UNLESS NOTED OTHERWISE.
WELDING: AWS D1.1, AWS A5.1 CLASS E70XX-LOW HYDROGEN ELECTRODES	

DATE: \_\_\_\_\_

REV: \_\_\_\_\_

DESCRIPTION: \_\_\_\_\_

ABC

DRAWING NO.: S10/205  
or