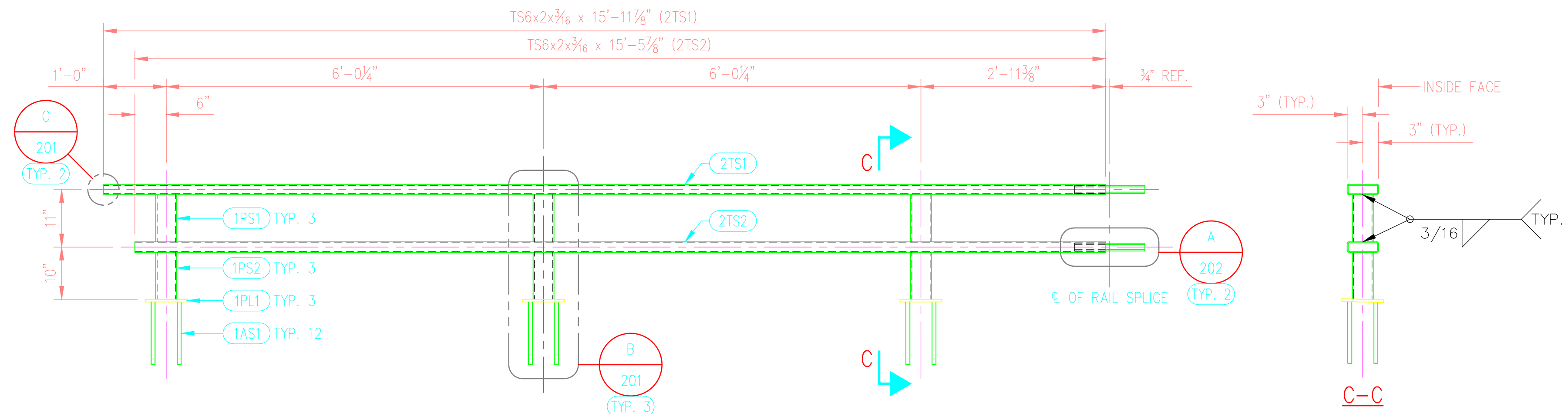
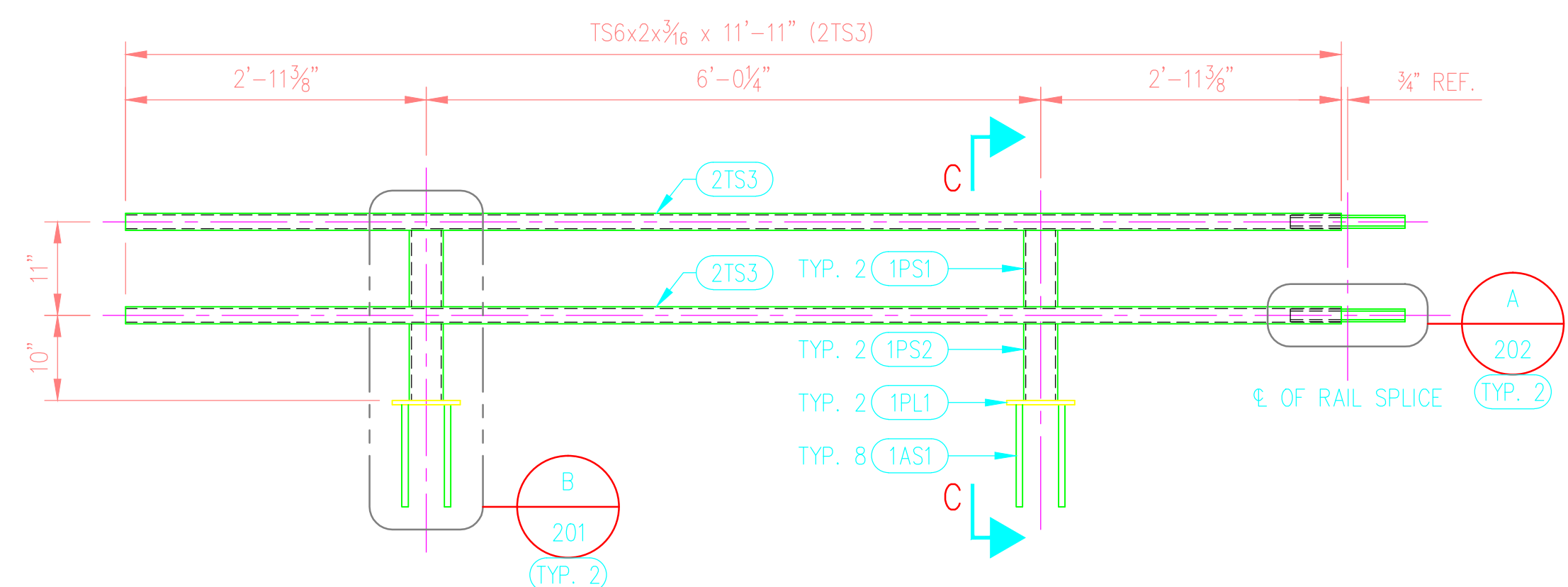


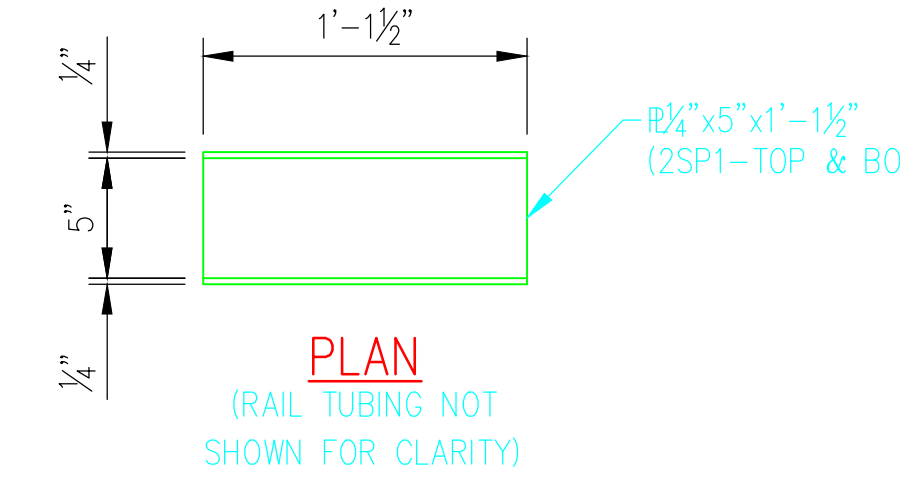
©2016 ANDY'S BEST CAD. ALL RIGHTS RESERVED. THIS DRAWING IS THE PROPERTY OF ANDY'S BEST CAD AND IS PROTECTED BY COPYRIGHT LAWS OF THE UNITED STATES OF AMERICA. ANY UNAUTHORIZED USE OF THE INFORMATION CONTAINED HEREIN OR PART THEREOF IS STRICTLY PROHIBITED. RECEIPT OR POSSESSION THEREOF DOES NOT CONVEY OR TRANSFER ANY RIGHT TO MAKE, COPY, MANUFACTURE AND/OR SELL EITHER THE DRAWING OR THE ITEMS SHOWN THEREIN.



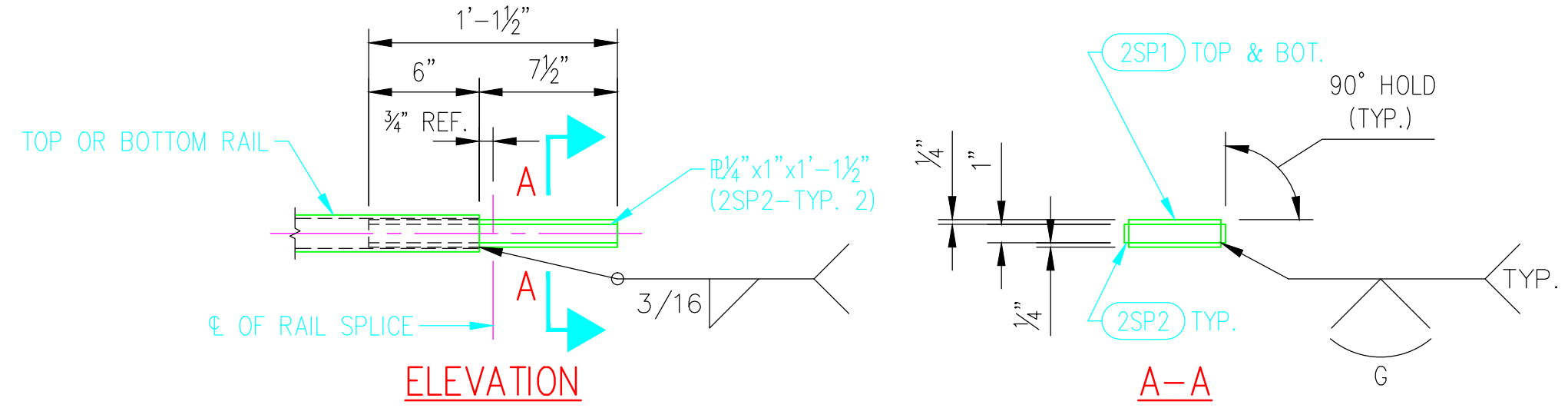
(1) PEDESTRIAN RAILING UNIT—ELEVATION  
MK PRU02—INSIDE FACE SHOWN



(1) PEDESTRIAN RAILING UNIT—ELEVATION  
MK PRU03—INSIDE FACE SHOWN

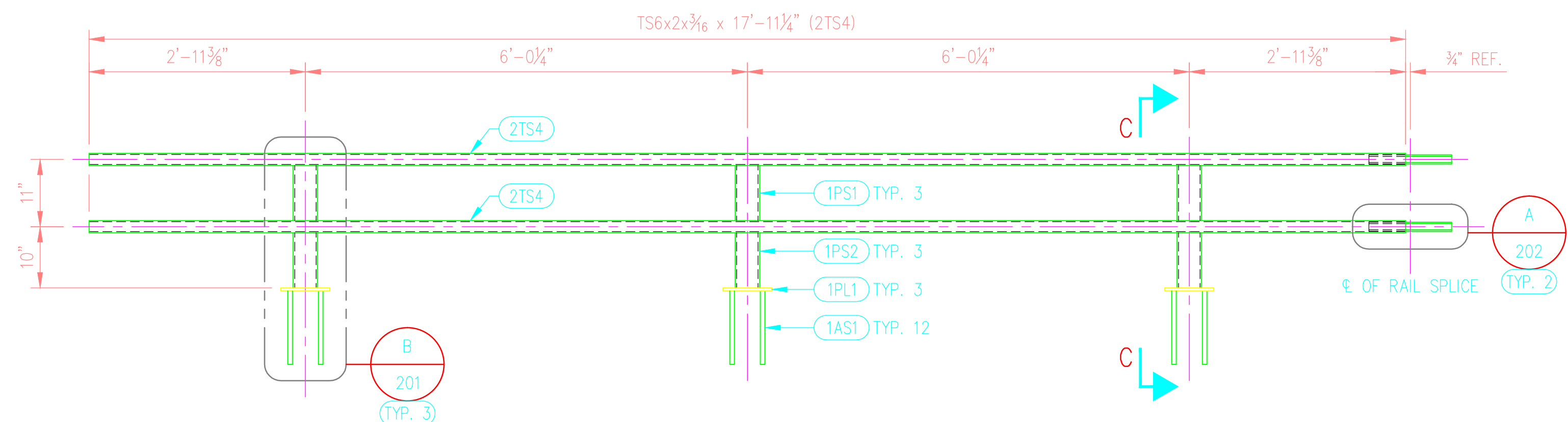


PLAN  
(RAIL TUBING NOT SHOWN FOR CLARITY)



ELEVATION

(2) RAIL SPLICES



(4) PEDESTRIAN RAILING UNITS—ELEVATION  
MK PRU04—INSIDE FACE SHOWN

BILL OF MATERIAL

MARK	QTY	DESCRIPTION	FT	IN	REMARKS
PRU02	1	PEDES. RAILING UNIT			SPAN 1
1PS1	3	TS4x4x1/4 POST-UPPER	0	9 3/8	SEE SHT. 201
1PS2	3	TS4x4x1/4 POST-LOWER	0	9 3/8	SEE SHT. 201
1PL1	3	1/2x8 BASE PLATE	0	8	SEE SHT. 201
1AS1	12	3/8" ANCHOR STUD	1	0 3/8	SEE SHT. 201
2TS1	1	TS6x2x3/16 TOP RAIL	15	11 5/16	
2TS2	1	TS6x2x3/16 BOT. RAIL	15	5 5/16	
2SP1	4	1/4x5 SPL. PL.-T&B	1	1 1/2	
2SP2	4	1/4x1 SPL. PL.-SIDES	1	1 1/2	
1PL2	2	1/2x1 1/2 END CAP	0	5 1/2	SEE SHT. 201
PRU03	1	PEDES. RAILING UNIT			SPAN 1
1PS1	2	TS4x4x1/4 POST-UPPER	0	9 3/8	SEE SHT. 201
1PS2	2	TS4x4x1/4 POST-LOWER	0	9 3/8	SEE SHT. 201
1PL1	2	1/2x8 BASE PLATE	0	8	SEE SHT. 201
1AS1	8	3/8" ANCHOR STUD	1	0 3/8	SEE SHT. 201
2TS3	2	TS6x2x3/16 T&B RAILS	11	11 5/16	
2SP1	4	1/4x5 SPL. PL.-T&B	1	1 1/2	
2SP2	4	1/4x1 SPL. PL.-SIDES	1	1 1/2	
PRU04	4	PEDES. RAILING UNIT			SPAN 1
1PS1	12	TS4x4x1/4 POST-UPPER	0	9 3/8	SEE SHT. 201
1PS2	12	TS4x4x1/4 POST-LOWER	0	9 3/8	SEE SHT. 201
1PL1	12	1/2x8 BASE PLATE	0	8	SEE SHT. 201
1AS1	48	3/8" ANCHOR STUD	1	0 3/8	SEE SHT. 201
2TS4	8	TS6x2x3/16 T&B RAILS	17	11 5/16	
2SP1	16	1/4x5 SPL. PL.-T&B	1	1 1/2	
2SP2	16	1/4x1 SPL. PL.-SIDES	1	1 1/2	

DATE:	
REVISION DESCRIPTION:	
ENGINEER'S STAMP:	

ANDY'S BEST CAD  
1323 CARLYLE PARK CIRCLE  
HIGHLANDS RANCH, CO 80129  
303-808-3352  
WWW.ANDYSBESTCAD.COM

DRAWN: A-LANDT  
DESIGNED: A-LANDT  
CLIENT: AS SHOWN  
DATE: 02/15/16  
SCALE: AS SHOWN

MATERIAL, COATING & FABRICATION SPECIFICATIONS

MATERIALS & FABRICATION	COATINGS
ALL TUBE SECTIONS: A500 GRADE B	NOTES: 1. ANY STEEL SURFACES THAT COME INTO CONTACT WITH CONCRETE SHALL NOT BE PAINTED. 2. AREAS OF STRUCTURAL STEEL THAT ARE FIELD WELDED SHALL NOT BE PAINTED BEFORE WELDING IS COMPLETED.
ALL PIPES: A53, GR. B, SCH. 40	
WIDE FLANGES, PLATES & BARS: A36	
ALL OTHER STEEL: A36	
WELDED, HEADED ANCHOR STUDS: A108	
HEADED ANCHOR BOLTS: A307	
INDOOR ANCHOR BOLTS: A307	
OUTDOOR ANCHOR BOLTS: A123, GALV.	
ALL WELDING: AWS D1.1	
SURFACE PREP: SSPC-SP6	
SCALE: AS NOTED	

PROJECT:

PEDESTRIAN RAILING UNIT  
MARKS PRU02, PRU03, PRU04

DRAWING TITLE:

DRAWING NO.:  
S09/202  
OF

