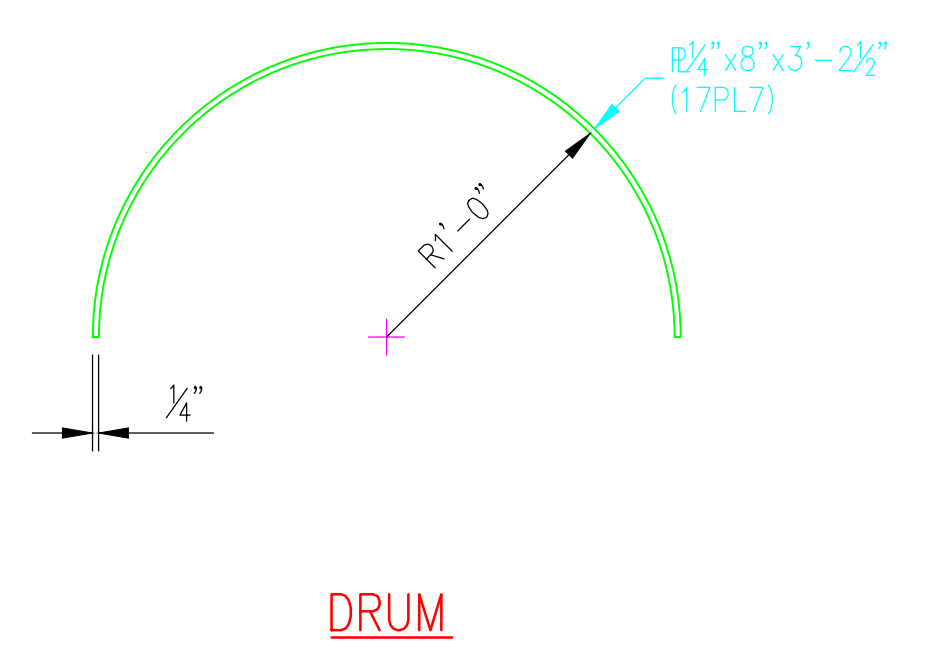
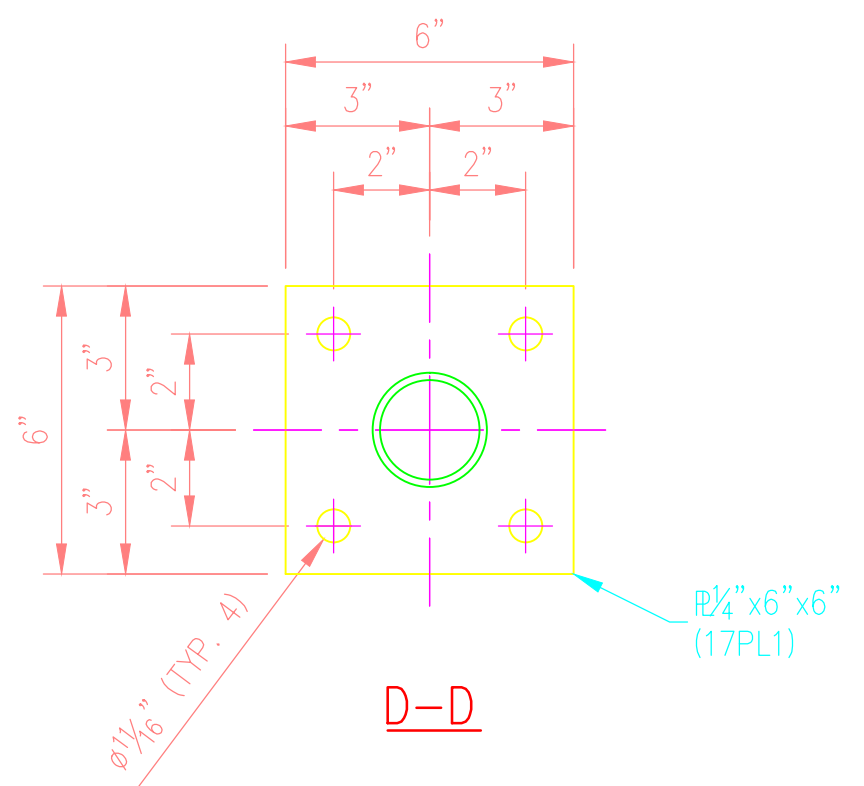
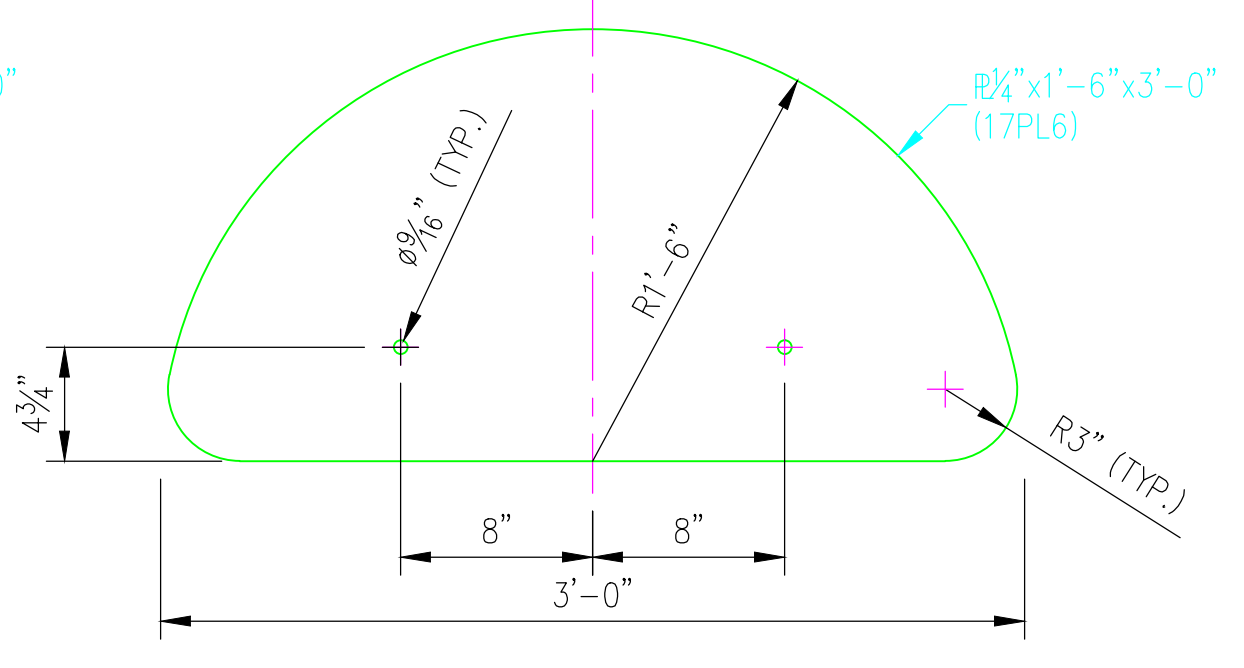
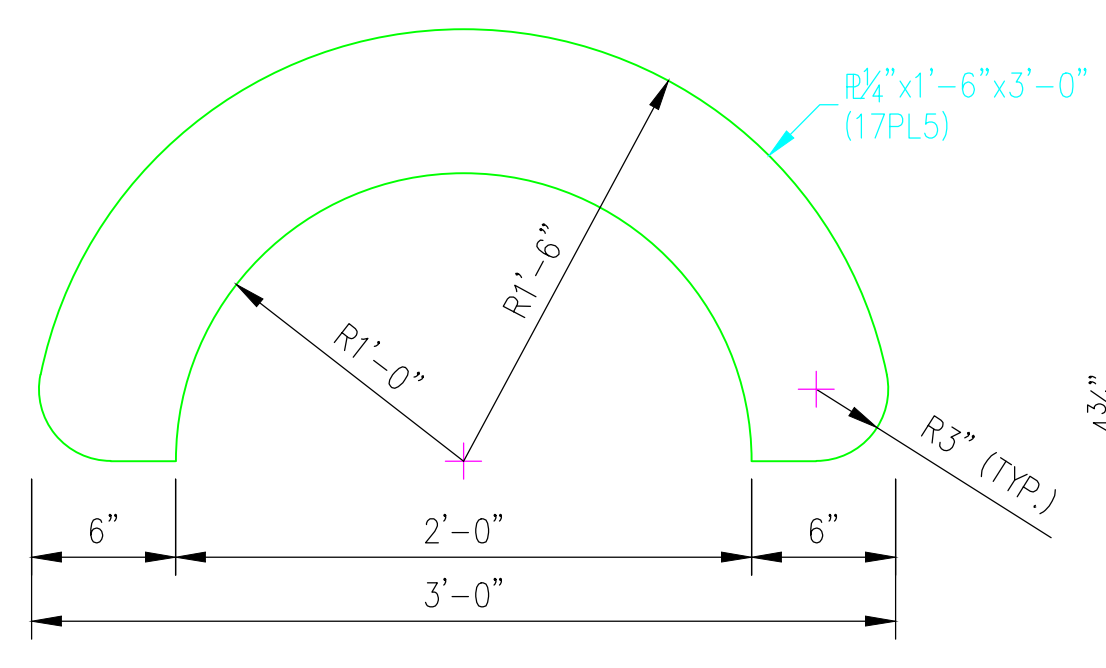
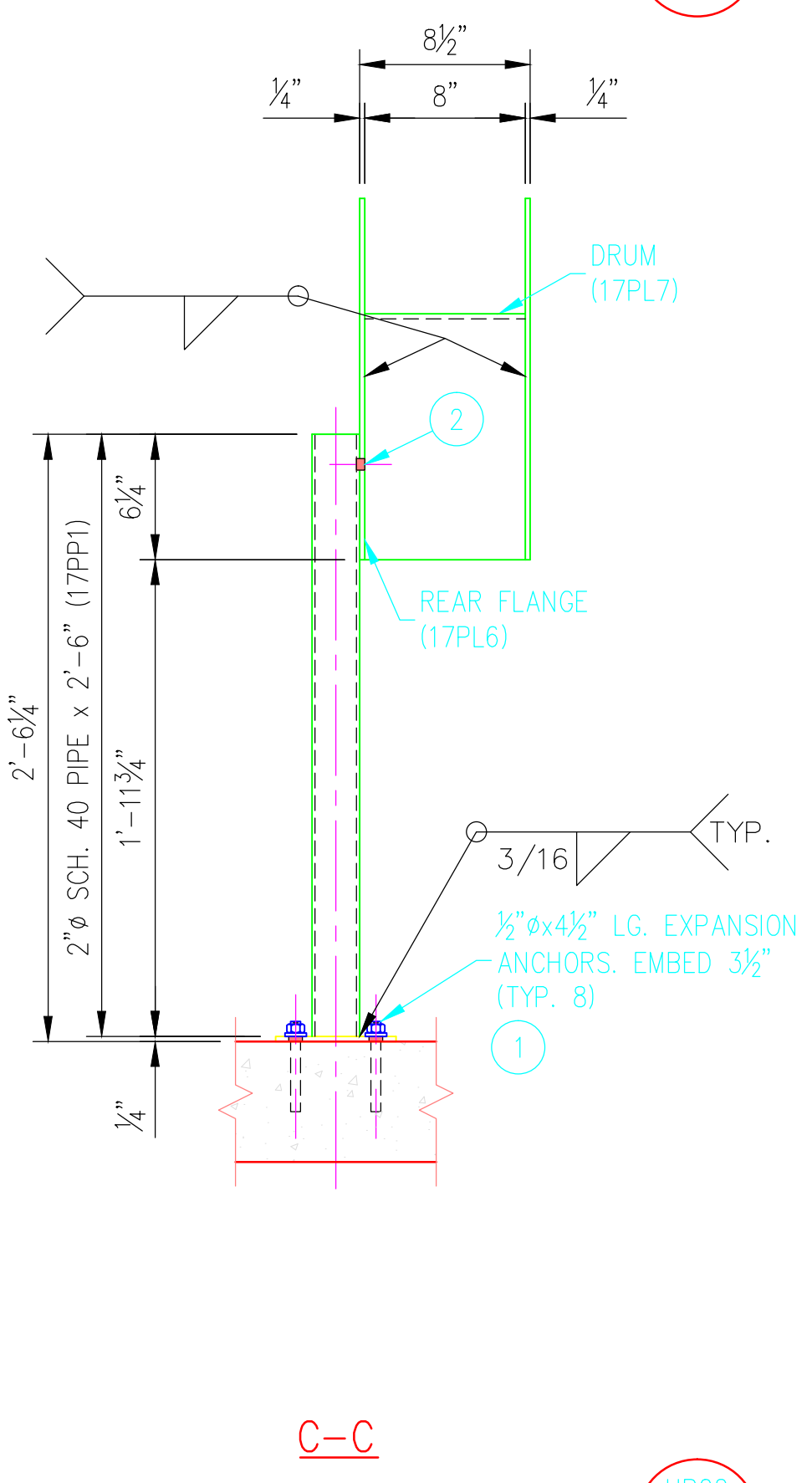
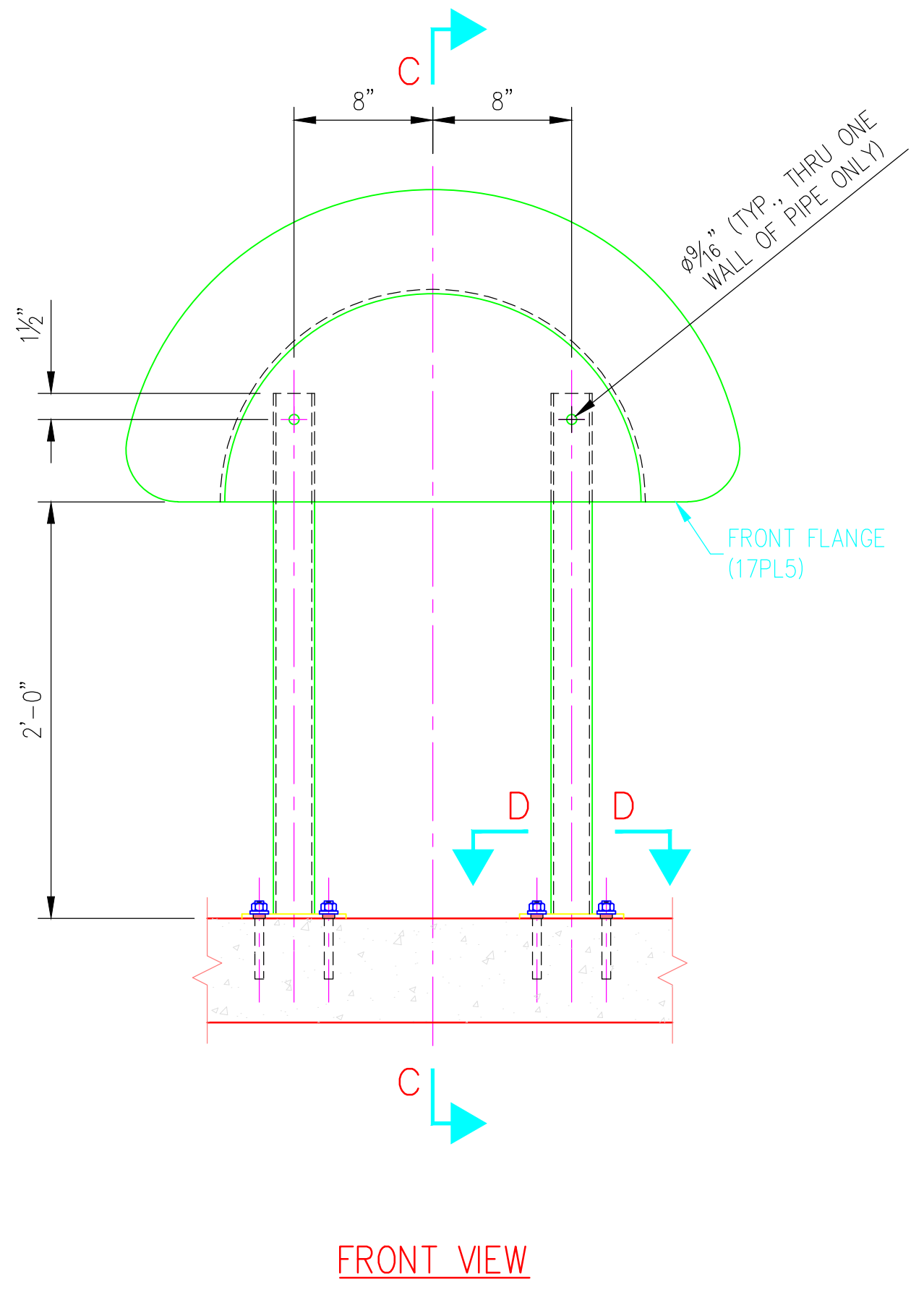


HR01



HR02

BILL OF MATERIAL

MARK	QTY	DESCRIPTION	FT	IN	REMARKS
HR01	1	HOSE RACK #1			JP8 SYSTEM
17PL1	1	1/4" x 6"	0	6	
17A1	1	L2x2x1/4	2	3/8	
17PL2	1	1/4" x 6"	1	0	
17PL3	1	1/4" x 6"	1	0	
17PL4	1	1/4" x 3 3/4"	2	1 1/4	BENT
①	4	1/2" x 4 1/2" LG. EXPANSION ANCHOR (GALV.)			
HR02	1	HOSE RACK #2			PUMPHOUSE
17PL1	2	1/4" x 6"	0	6	
17PP1	2	2" SCH. 40 PIPE	2	6 1/2	
17PL5	1	1/4" x 1'-6"	3	0	
17PL6	1	1/4" x 1'-6"	3	0	
17PL7	1	1/4" x 8"	3	2 1/2	BENT
①	8	1/2" x 4" LG. EXPANSION ANCHOR (A307)			
②	2	1/2" x 1 1/4" HEX HD. BOLT W/HEX NUT, FLAT WASHER & LOCK WASHER EACH (A325)			

DATE:	
REVISION DESCRIPTION:	
ENGINEER'S STAMP:	

ANDY'S BEST CAD
1323 CARLYLE PARK CIRCLE
HIGHLANDS RANCH, CO 80129
303-808-3352
WWW.ANDYSBESTCAD.COM

DRAWN: A. LANDT
DESIGNED: A. LANDT
CLIENT: 02/15/16
SCALE: AS SHOWN

PROJECT:

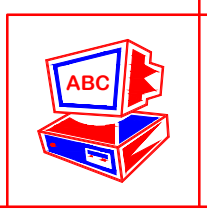
JP SYSTEM &
PUMPHOUSE
HOSE RACKS #1 & #2

DRAWING TITLE:

DRAWING NO.:
S08/217
OF

MATERIAL, COATING & FABRICATION SPECIFICATIONS

MATERIALS & FABRICATION	COATINGS
ALL TUBE SECTIONS: A500 GRADE B	PRIMER (SHOP APPLIED): RUST-OLEUM ALKYD HIGH-PERFORMANCE INDUSTRIAL SHOP COAT PRIMER, RED 2 MILS DFT
ALL PIPES: A53, GR. B, SCH. 40	
WIDE FLANGES, PLATES & BARS: A36	NO COATINGS SHALL BE APPLIED TO ANY SURFACES EMBEDDED IN CONCRETE
ALL OTHER STEEL: A36	
WELDED, HEADED ANCHOR STUDS: A108	
HEADED ANCHOR BOLTS: A307	
INDOOR ANCHOR BOLTS: A307	
OUTDOOR ANCHOR BOLTS: A123, GALV.	
ALL WELDING: AWS D1.1	
SURFACE PREP: SSPC-SP6	
SCALE: AS NOTED	



©2016 ANDY'S BEST CAD. ALL RIGHTS RESERVED. THIS DRAWING IS THE PROPERTY OF ANDY'S BEST CAD AND IS PROTECTED BY COPYRIGHT LAWS OF THE UNITED STATES OF AMERICA. ANY UNAUTHORIZED USE OF THE INFORMATION CONTAINED HEREIN OR PART THEREOF IS STRICTLY PROHIBITED. RECEIPT OR POSSESSION THEREOF DOES NOT CONVEY OR TRANSFER ANY RIGHT TO MAKE, COPY, MANUFACTURE AND/OR SELL EITHER THE DRAWING OR THE ITEMS SHOWN THEREIN.