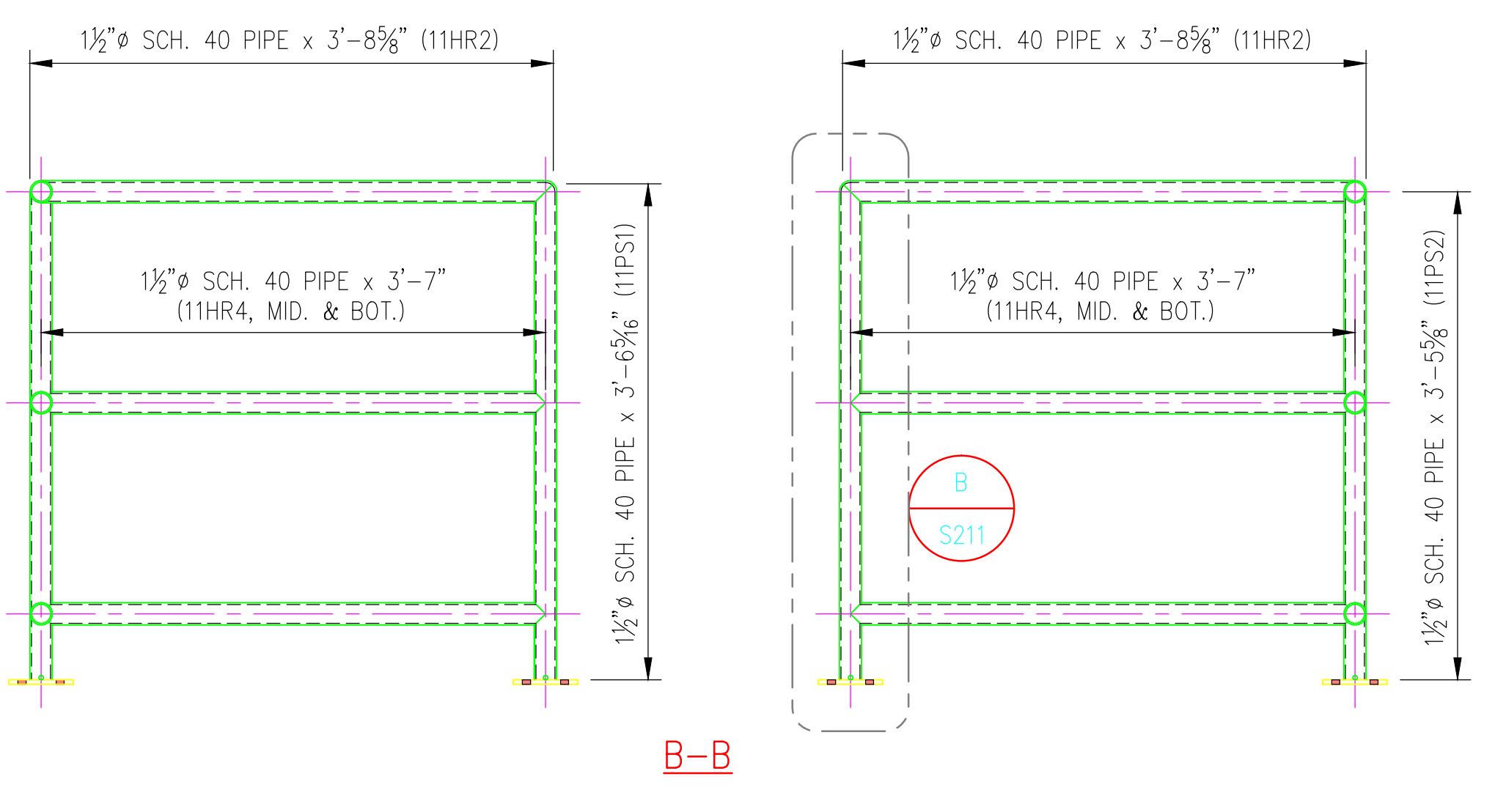
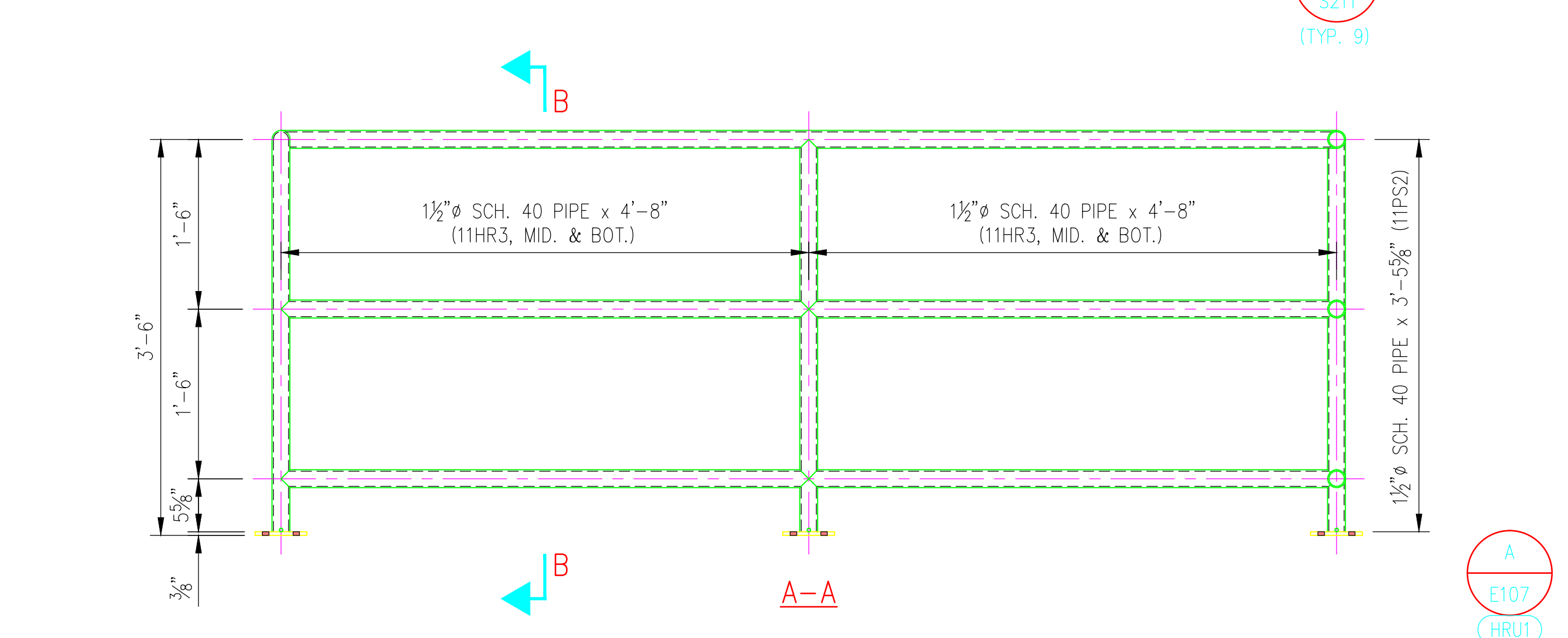
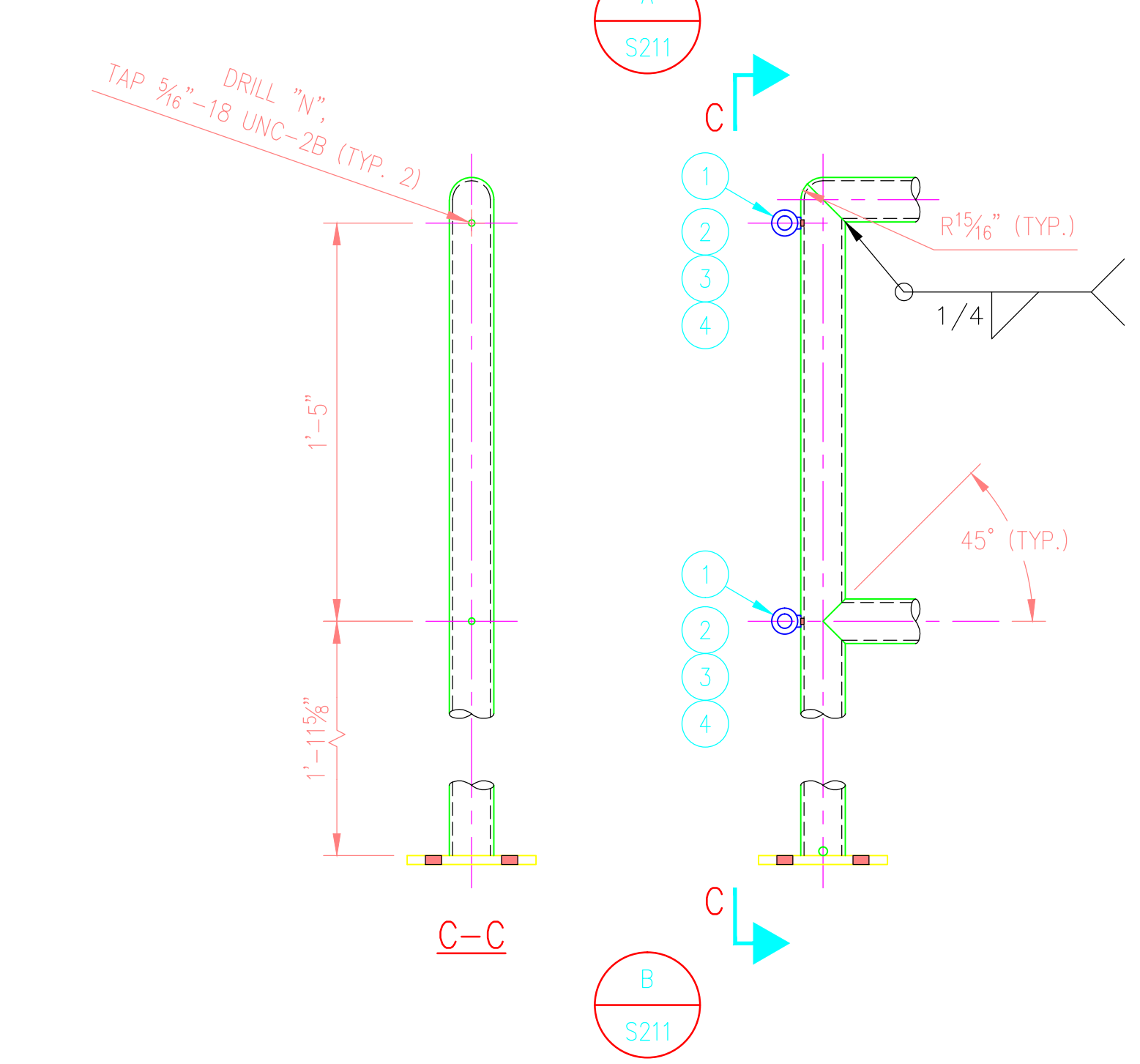
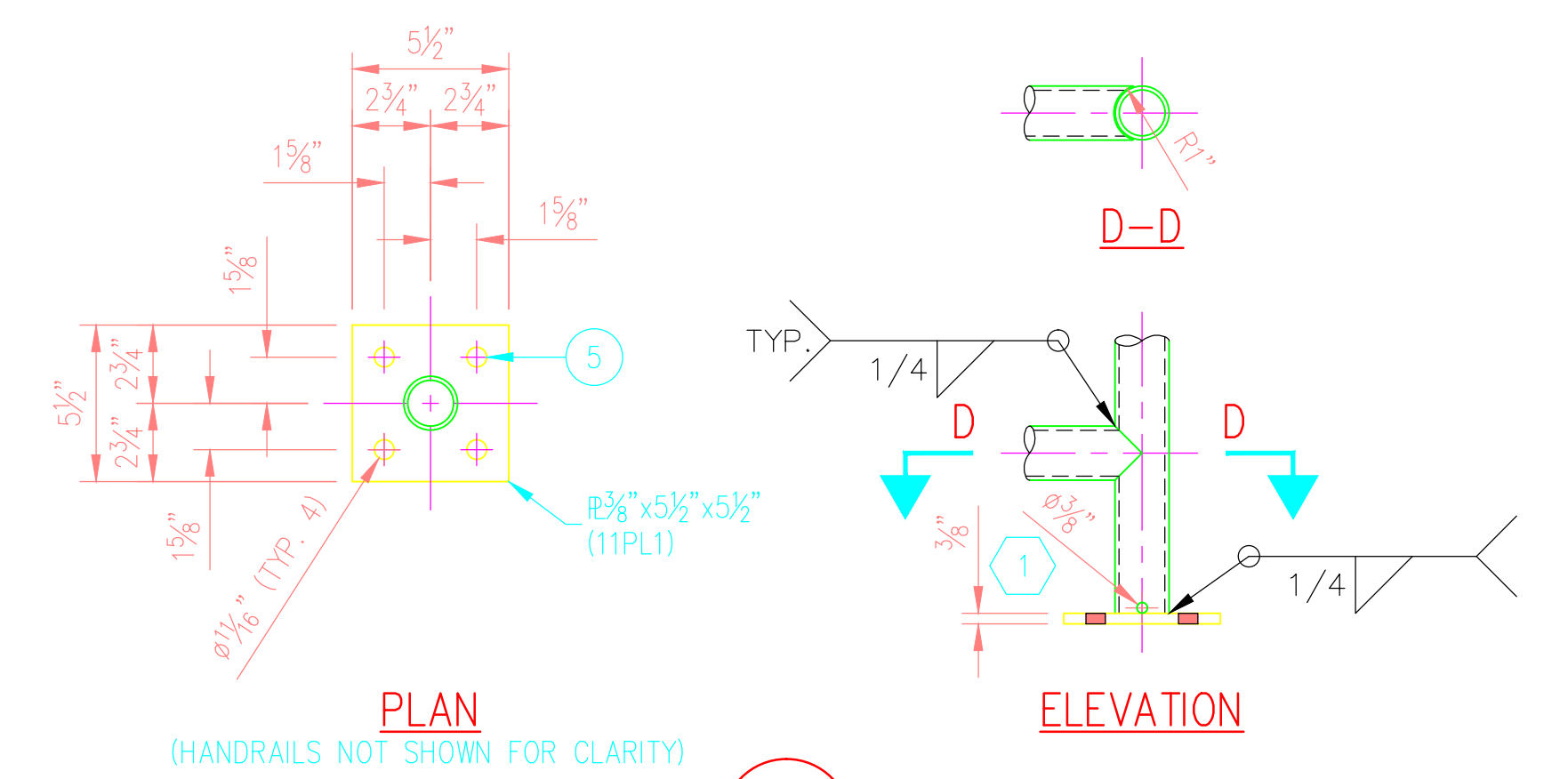
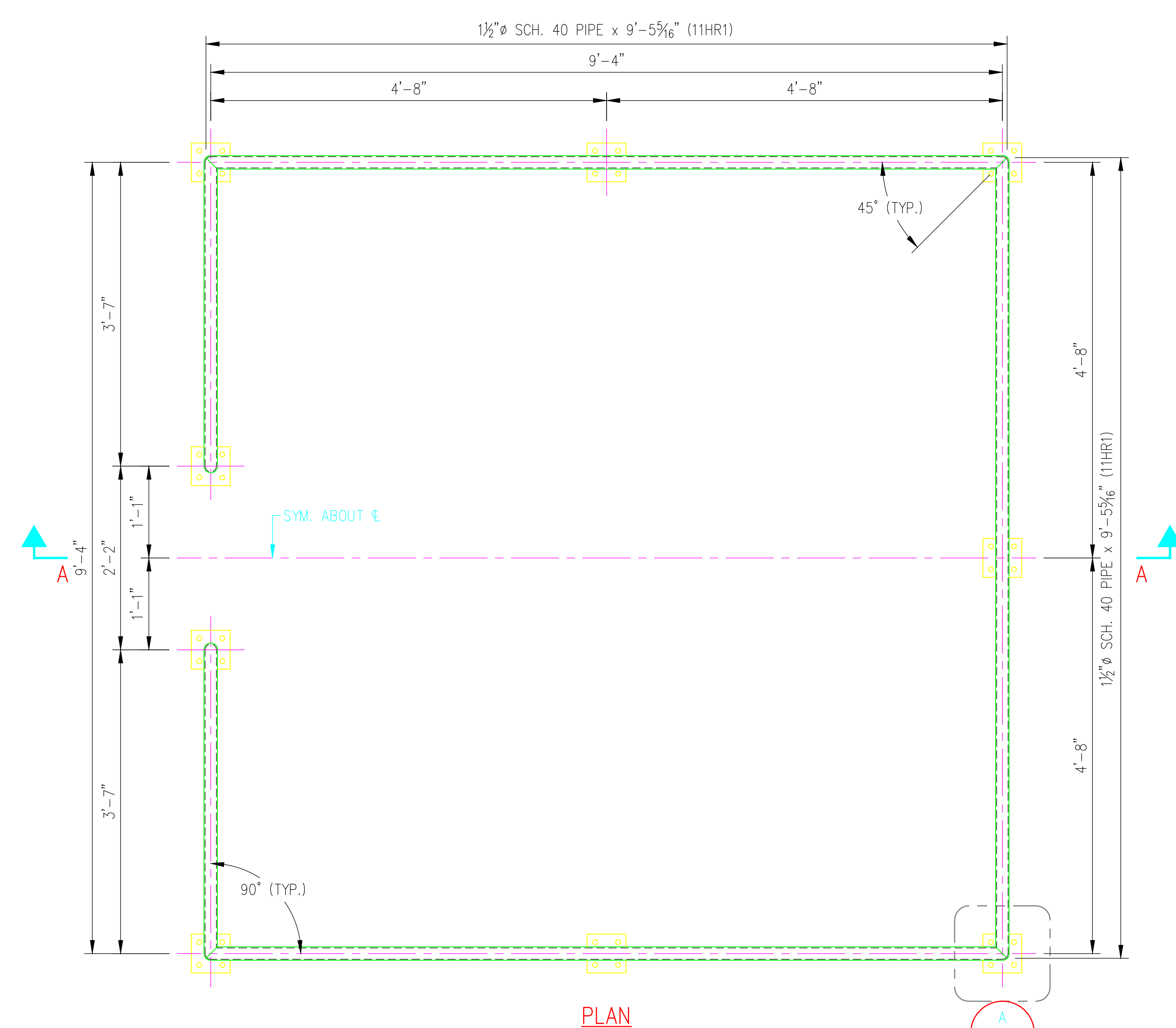


© 2016 ANDY'S BEST CAD. ALL RIGHTS RESERVED. THIS DRAWING IS THE PROPERTY OF ANDY'S BEST CAD AND IS PROTECTED BY COPYRIGHT LAWS OF THE UNITED STATES OF AMERICA. ANY UNAUTHORIZED USE OF THE INFORMATION CONTAINED HEREIN OR THAT THEREOF IS STRICTLY PROHIBITED. RECEIPT OF POSSESSION THEREOF DOES NOT CONVEY OR TRANSFER ANY RIGHT TO MAKE, COPY, MANUFACTURE AND/OR SELL EITHER THE DRAWING OR THE ITEMS SHOWN THEREIN.



BILL OF MATERIAL					
MARK	QTY	DESCRIPTION	FT	IN	REMARKS
HRU1	1	CONTAINMENT BASIN #1 HANDRAIL UNIT			
11HR1	3	1 1/2" $\phi$ SCH. 40 PIPE	9	5 5/16	
11HR2	2	1 1/2" $\phi$ SCH. 40 PIPE	3	8 3/4	
11HR3	12	1 1/2" $\phi$ SCH. 40 PIPE	4	8 3/4	
11HR4	4	1 1/2" $\phi$ SCH. 40 PIPE	3	7 1/2	
11PS1	2	1 1/2" $\phi$ SCH. 40 PIPE	3	6 1/8	
11PS2	7	1 1/2" $\phi$ SCH. 40 PIPE	3	5 3/4	
11PL1	9	5/8" x 5/2"	0	5 1/2	

NO.	QTY	DESCRIPTION	REMARKS
1	4	5/16" x 1 1/8" SHOULDER TYPE MACHINERY EYE BOLT (GALV.)	
2	2	1/2" x 3/4" SWIVEL EYE BOLT SNAP (GALV.)	NOT SHOWN
3	2	5/16" x 2'-6" PROOF COIL CHAIN (GALV.)	NOT SHOWN
4	4	5/16" x 2 1/8" QUICK LINK (GALV.)	NOT SHOWN
5	36	1/2" x 4" LG. EXPANSION ANCHOR (GALV.)	

DRAWN:		PROJECT:	
A. LANDT	A. LANDT	ANDY'S BEST CAD	CONTAINMENT BASIN #1 HANDRAIL UNIT
DESIGNED: A. LANDT	CLIENT: AS SHOWN	1323 CARLYLE PARK CIRCLE	
CLIENT: AS SHOWN	DATE: 02/15/16	HIGHLANDS RANCH, CO 80129	
DATE: 02/15/16	SCALE: AS SHOWN	303-808-3352	
SCALE: AS SHOWN		WWW.ANDYSBESTCAD.COM	

**NOTES:**  
 1 POSITION HANDRAIL POST DRAIN HOLE TOWARDS INTERIOR OF CONTAINMENT BASIN

MATERIAL, COATING & FABRICATION SPECIFICATIONS	
MATERIALS & FABRICATION	COATINGS
ALL TUBE SECTIONS: A500 GRADE B	HANDRAIL UNIT SHALL BE HOT DIPPED GALVANIZED AFTER FABRICATION PER ASTM A123
ALL PIPES: A53, GR. B, SCH. 40	
WIDE FLANGES, PLATES & BARS: A36	
ALL OTHER STEEL: A36	
WELDED, HEADED ANCHOR STUDS: A108	
HEADED ANCHOR BOLTS: A307	
INDOOR ANCHOR BOLTS: A307	
OUTDOOR ANCHOR BOLTS: A123, GALV.	
ALL WELDING: AWS D1.1	
SURFACE PREP: SSPC-SP6	
SCALE: AS NOTED	

ENGINEER'S STAMP

DRAWING NO.: S08/211 OF