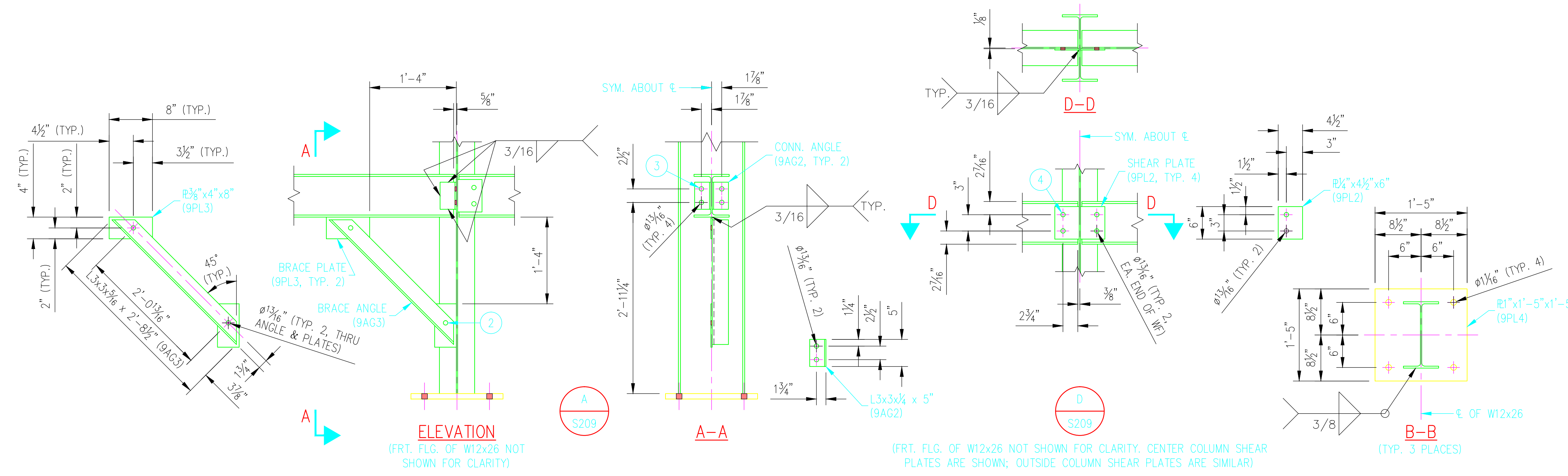
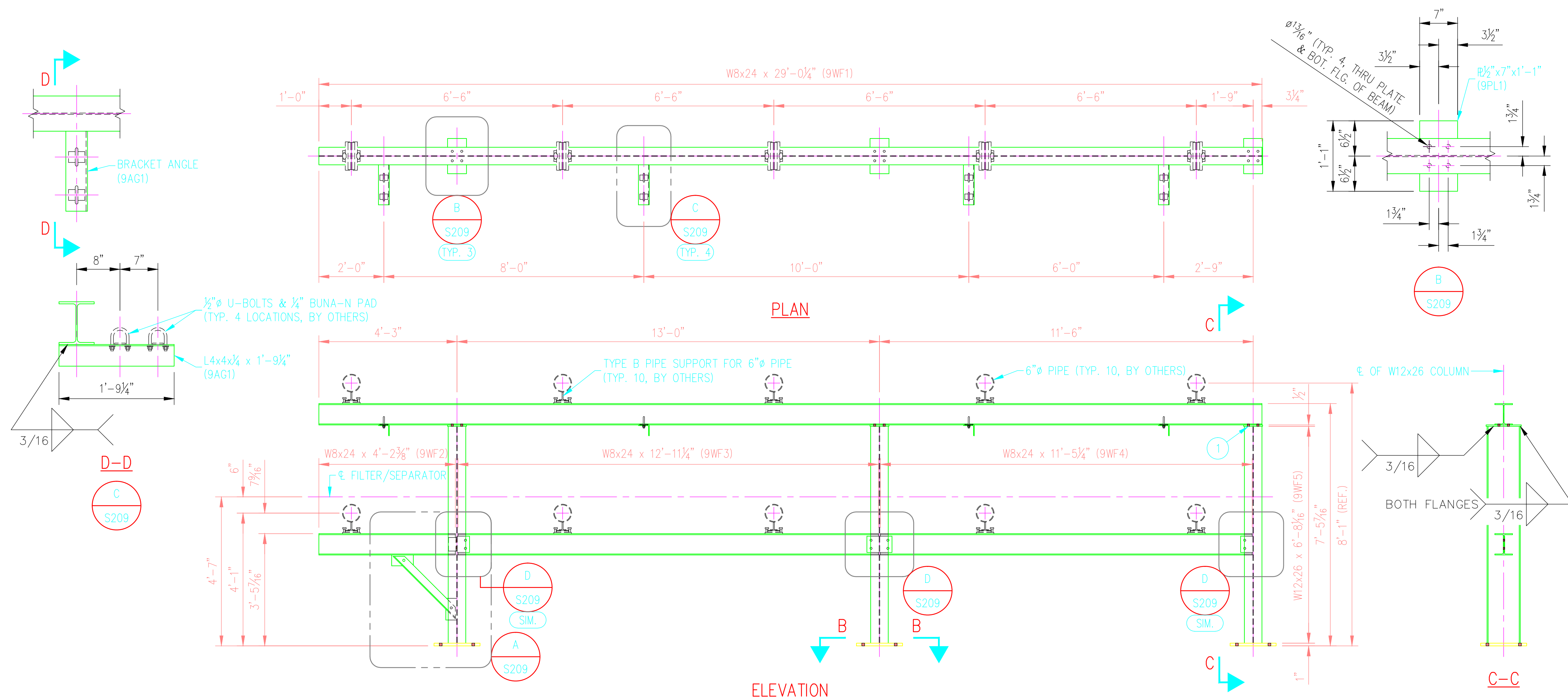


©2016 ANDY'S BEST CAD. ALL RIGHTS RESERVED. THIS DRAWING IS THE PROPERTY OF ANDY'S BEST CAD AND IS PROTECTED BY COPYRIGHT LAWS OF THE UNITED STATES OF AMERICA. ANY UNAUTHORIZED USE OF THE INFORMATION CONTAINED HEREIN OR REPRODUCTION THEREOF DOES NOT CONFER OR TRANSFER ANY RIGHT TO MAKE, COPY, MANUFACTURE AND/OR SELL EITHER THE DRAWING OR THE ITEMS SHOWN THEREON.



BILL OF MATERIAL					
MARK	QTY	DESCRIPTION	FT	IN	REMARKS
PS07	1	PS-7 PIPE SUPPORT			
9WF1	1	W8x24	29	0 3/8	
9AG1	4	L4x4x1/4	1	9 3/8	
9PL1	3	1/2"x7"	1	1	
9WF2	1	W8x24	4	2 1/2	
9WF3	1	W8x24	12	11 3/8	
9WF4	1	W8x24	11	5 3/8	
9WF5	3	W12x26	6	8 3/16	
9AG2	2	L3x3x1/4	0	5 3/8	
9PL2	4	1/4"x4 1/2"	0	6	
9PL3	2	3/8"x4"	0	8	
9AG3	1	L3x3x3/16	2	8 3/8	
9PL4	3	1"x1"-5"	1	5	
1	12	3/4"x2" HEX HD. BOLT W/HEX NUT, FLAT WASHER & LOCK WASHER EACH (A325)			
2	2	5/8"x1 1/2" HEX HD. BOLT W/HEX HUT, FLAT WASHER & LOCK WASHER EACH (A307)			
3	4	3/4"x1 1/2" HEX HD. BOLT W/HEX HUT, FLAT WASHER & LOCK WASHER EACH (A325)			
4	8	3/2"x1 1/2" HEX HD. BOLT W/HEX HUT, FLAT WASHER & LOCK WASHER EACH (A325)			

DATE:	
REVISION DESCRIPTION:	
ENGINEER'S STAMP:	

ANDY'S BEST CAD
1323 CARLYLE PARK CIRCLE
HIGHLANDS RANCH, CO 80129
303-808-3352
WWW.ANDYSBESTCAD.COM

DRAWN: A. LANDT
DESIGNED: A. LANDT
CLIENT: 02/15/16
SCALE: AS SHOWN

MATERIAL, COATING & FABRICATION SPECIFICATIONS

MATERIALS & FABRICATION	COATINGS
ALL TUBE SECTIONS: A500 GRADE B	PRIMER (SHOP APPLIED): RUST-OLEUM ALKYD HIGH-PERFORMANCE INDUSTRIAL SHOP COAT PRIMER, RED 2 MILS DFT
ALL PIPES: A53, GR. B, SCH. 40	NO COATINGS SHALL BE APPLIED TO ANY SURFACES EMBEDDED IN CONCRETE
WIDE FLANGES, PLATES & BARS: A36	
ALL OTHER STEEL: A36	
WELDED, HEADED ANCHOR STUDS: A108	
HEADED ANCHOR BOLTS: A307	
INDOOR ANCHOR BOLTS: A307	
OUTDOOR ANCHOR BOLTS: A123, GALV.	
ALL WELDING: AWS D1.1	
SURFACE PREP: SSPC-SP6	
SCALE: AS NOTED	

DRAWING TITLE: PUMPHOUSE PIPE SUPPORT FRAME PS-7

DRAWING NO.: S08/209
OF

