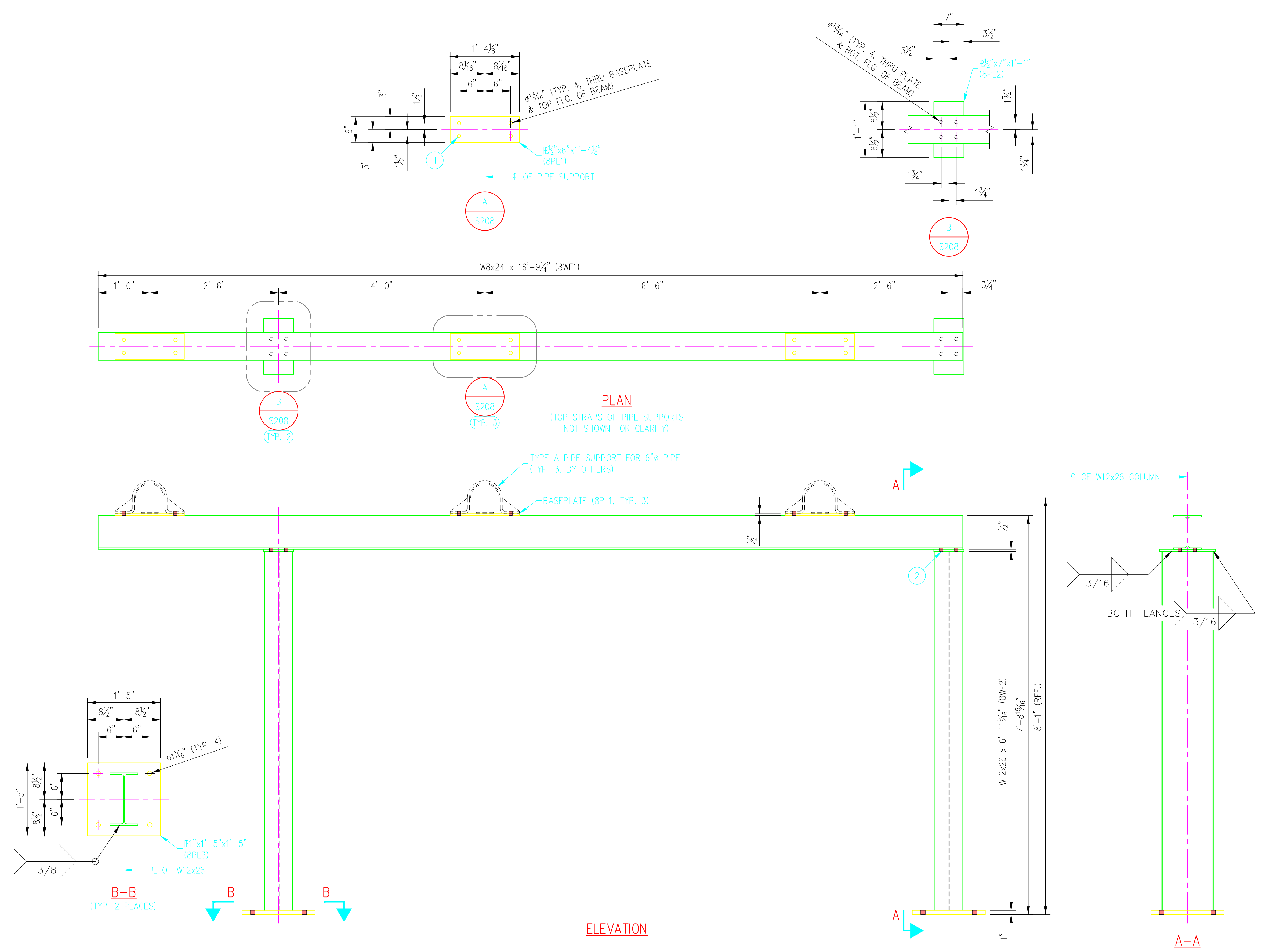


©2016 ANDY'S BEST CAD. ALL RIGHTS RESERVED. THIS DRAWING IS THE PROPERTY OF ANDY'S BEST CAD AND IS PROTECTED BY COPYRIGHT LAWS OF THE UNITED STATES OF AMERICA. ANY UNAUTHORIZED USE OF THE INFORMATION CONTAINED HEREIN OR PART THEREOF IS STRICTLY PROHIBITED. RECEIPT OR POSSESSION THEREOF DOES NOT CONVEY OR TRANSFER ANY RIGHT TO MAKE, COPY, MANUFACTURE AND/OR SELL EITHER THE DRAWING OR THE ITEMS SHOWN THEREIN.



BILL OF MATERIAL					
MARK	QTY	DESCRIPTION	FT	IN	REMARKS
PS04	1	PS-4 PIPE SUPPORT			
8PL1	3	$2 1/2" \times 6"$	1	4 1/8	
8WF1	1	W8x24	16	9 3/8	
8PL2	2	$2 1/2" \times 7"$	1	1	
8WF2	2	W12x26	6	11 1/16	
8PL3	2	$2 1/2" \times 1'-5"$	1	5	
①	12	$3/4" \times 2 1/2"$ HEX HD. BOLT W/HEX NUT, FLAT WASHER & LOCK WASHER EACH (A325)			
②	8	$3/4" \times 2"$ HEX HD. BOLT W/HEX HUT, FLAT WASHER & LOCK WASHER EACH (A325)			

DATE:	
REVISION DESCRIPTION:	
ENGINEER'S STAMP:	

ANDY'S BEST CAD  
1323 CARLYLE PARK CIRCLE  
HIGHLANDS RANCH, CO 80129  
303-808-3352  
WWW.ANDYSBESTCAD.COM

DRAWN: A. LANDT  
DESIGNED: A. LANDT  
CLIENT: 02/15/16  
DATE: AS SHOWN  
SCALE:

MATERIAL, COATING & FABRICATION SPECIFICATIONS	
MATERIALS & FABRICATION	COATINGS
ALL TUBE SECTIONS: A500 GRADE B	PRIMER (SHOP APPLIED): RUST-OLEUM ALKYD HIGH-PERFORMANCE INDUSTRIAL SHOP COAT PRIMER, RED 2 MILS DFT
ALL PIPES: A53, GR. B, SCH. 40	
WIDE FLANGES, PLATES & BARS: A36	NO COATINGS SHALL BE APPLIED TO ANY SURFACES EMBEDDED IN CONCRETE
ALL OTHER STEEL: A36	
WELDED, HEADED ANCHOR STUDS: A108	
HEADED ANCHOR BOLTS: A307	
INDOOR ANCHOR BOLTS: A307	
OUTDOOR ANCHOR BOLTS: A123, GALV.	
ALL WELDING: AWS D1.1	
SURFACE PREP: SSPC-SP6	
SCALE: AS NOTED	

DRAWING TITLE: PUMPHOUSE PIPE SUPPORT FRAME PS-4

DRAWING NO.: S08/208  
OF

