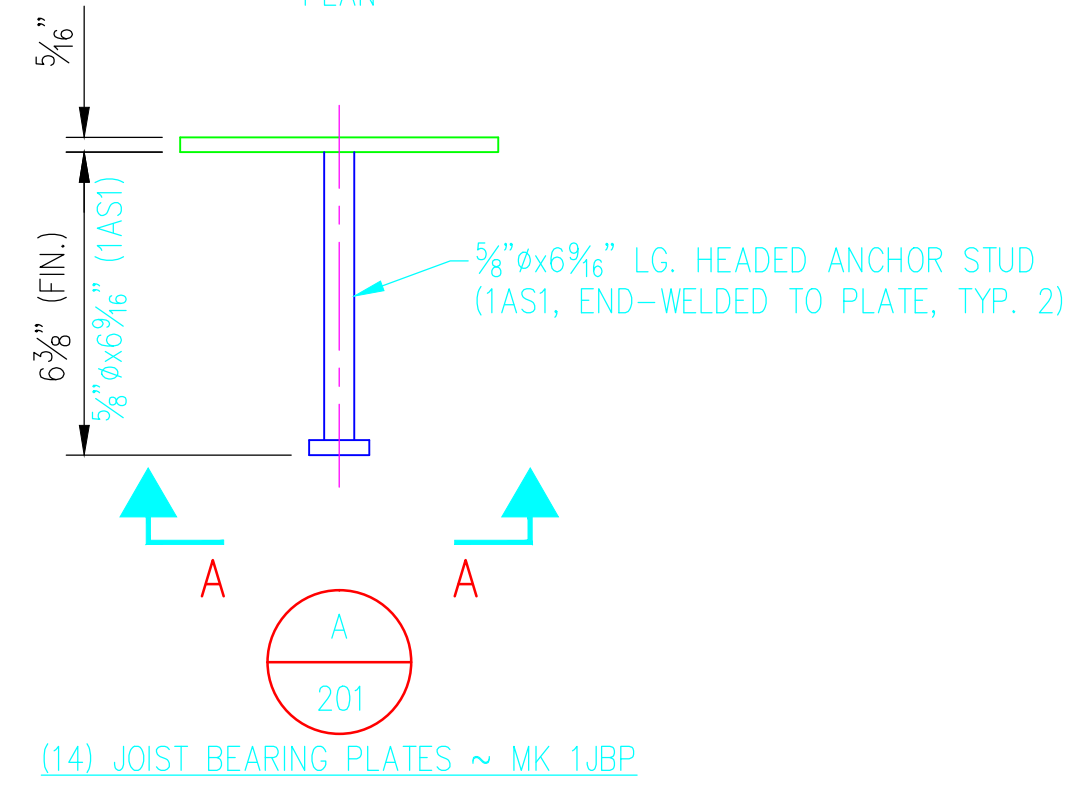
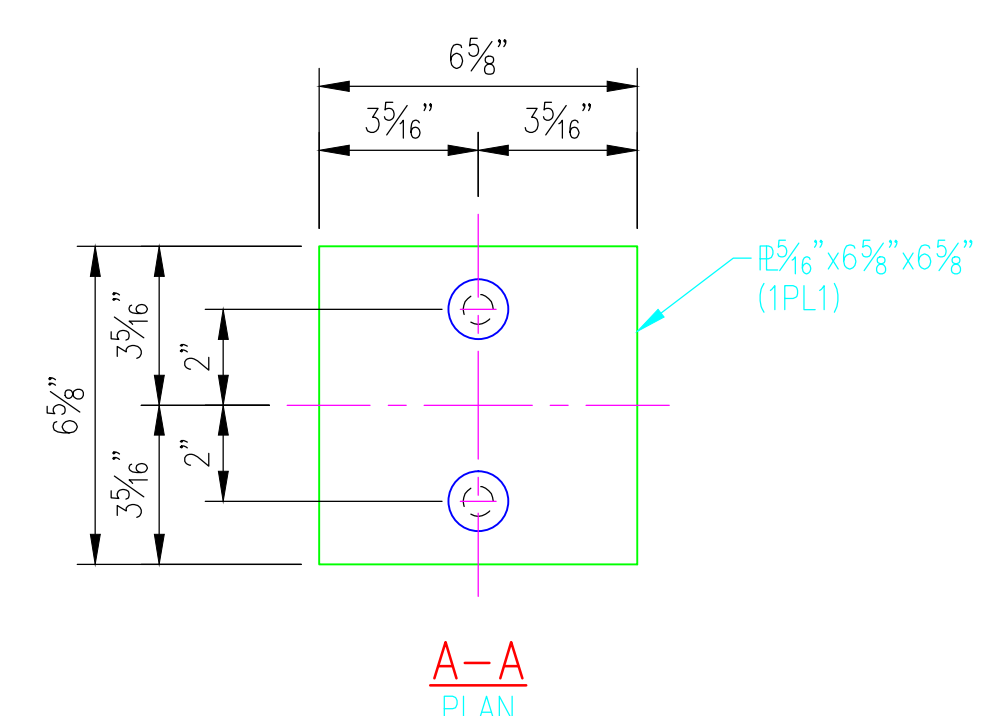
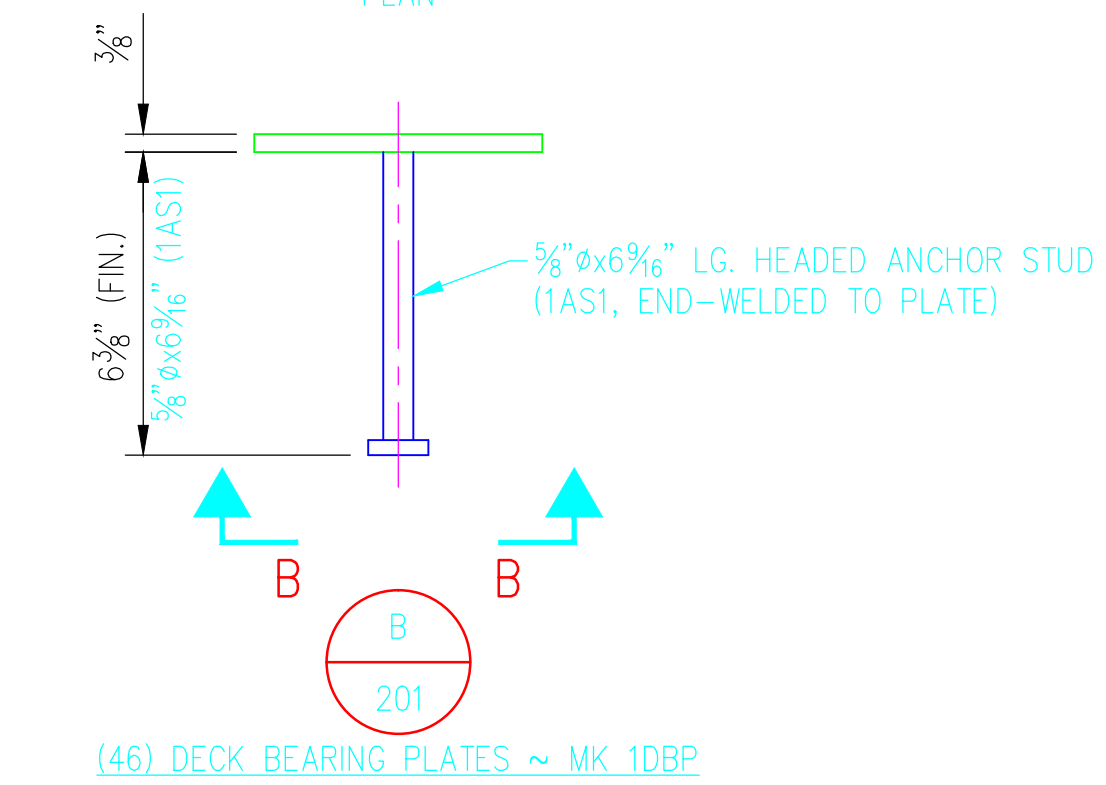
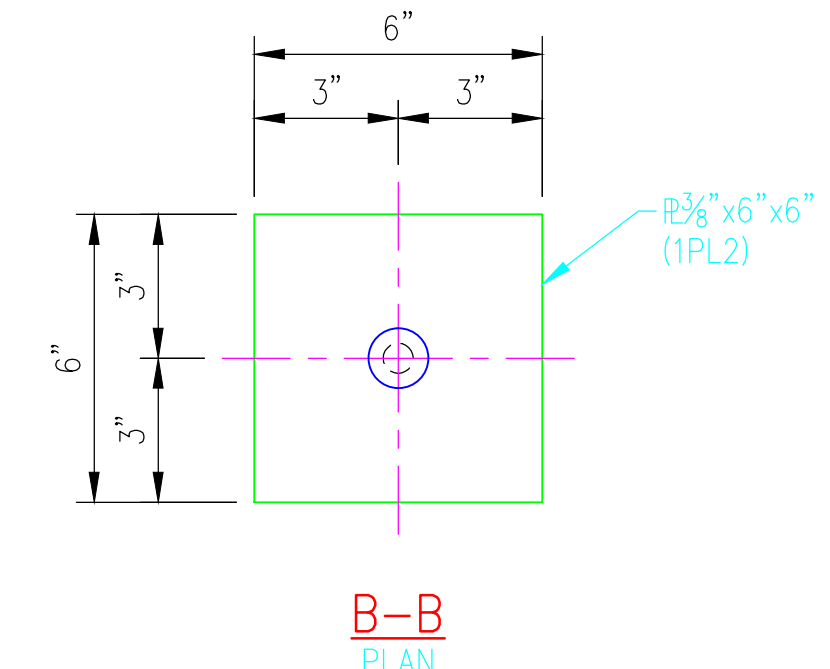


CONTROL ROOM PLAN
 (14) JOIST BEARING PLATES ~ MK 1JBP
 AND (46) DECK BEARING PLATES ~ MK 1DBP



(14) JOIST BEARING PLATES ~ MK 1JBP



(46) DECK BEARING PLATES ~ MK 1DBP

BILL OF MATERIAL

MARK	QTY	DESCRIPTION	FT	IN	REMARKS
1JBP	14	JOIST BEARING PLATE			
1PL1	14	1/2"x6x6 3/8"	0	6 3/8"	
1AS1	28	3/8" ANCHOR STUD	0	6 3/8"	NELSON H4L HCA
1DBP	46	DECK BEARING PLATE			
1PL2	46	1/2"x6	0	6	
1AS1	46	3/8" ANCHOR STUD	0	6 3/8"	NELSON H4L HCA

DATE:	
REV:	
REVISION DESCRIPTION:	
ENGINEER'S STAMP:	

ANDY'S BEST CAD
 1323 CARLYLE PARK CIRCLE
 HIGHLANDS RANCH, CO 80129
 303-808-3352
 WWW.ANDYSBESTCAD.COM

DRAWN: A-LANDT
 DESIGNED: A-LANDT
 CLIENT: 02/15/16
 DATE: AS SHOWN
 SCALE:

MATERIAL, COATING & FABRICATION SPECIFICATIONS

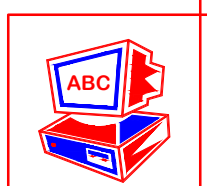
MATERIALS & FABRICATION	COATINGS
ALL TUBE SECTIONS: A500 GRADE B	PRIMER (SHOP APPLIED): RUST-OLEUM ALKYD HIGH-PERFORMANCE INDUSTRIAL SHOP COAT PRIMER, RED 2 MILS DFT
ALL PIPES: A53, GR. B, SCH. 40	
WIDE FLANGES, PLATES & BARS: A36	NO COATINGS SHALL BE APPLIED TO ANY SURFACES EMBEDDED IN CONCRETE
ALL OTHER STEEL: A36	
WELDED, HEADED ANCHOR STUDS: A108	
HEADED ANCHOR BOLTS: A307	
INDOOR ANCHOR BOLTS: A307	
OUTDOOR ANCHOR BOLTS: A123, GALV.	
ALL WELDING: AWS D1.1	
SURFACE PREP: SSPC-SP6	
SCALE: AS NOTED	

PROJECT:

JOIST
 AND DECK
 BEARING PLATES

DRAWING TITLE:

DRAWING NO.:
 S08/201
 OF



©2016 ANDY'S BEST CAD. ALL RIGHTS RESERVED. THIS DRAWING IS THE PROPERTY OF ANDY'S BEST CAD AND IS PROTECTED BY COPYRIGHT LAWS OF THE UNITED STATES OF AMERICA. ANY UNAUTHORIZED USE OF THE INFORMATION CONTAINED HEREIN OR PART THEREOF IS STRICTLY PROHIBITED. RECEIPT OR POSSESSION THEREOF DOES NOT CONFER OR TRANSFER ANY RIGHT TO MAKE, COPY, MANUFACTURE AND/OR SELL OTHERS THE DRAWING OR THE ITEMS SHOWN THEREIN.