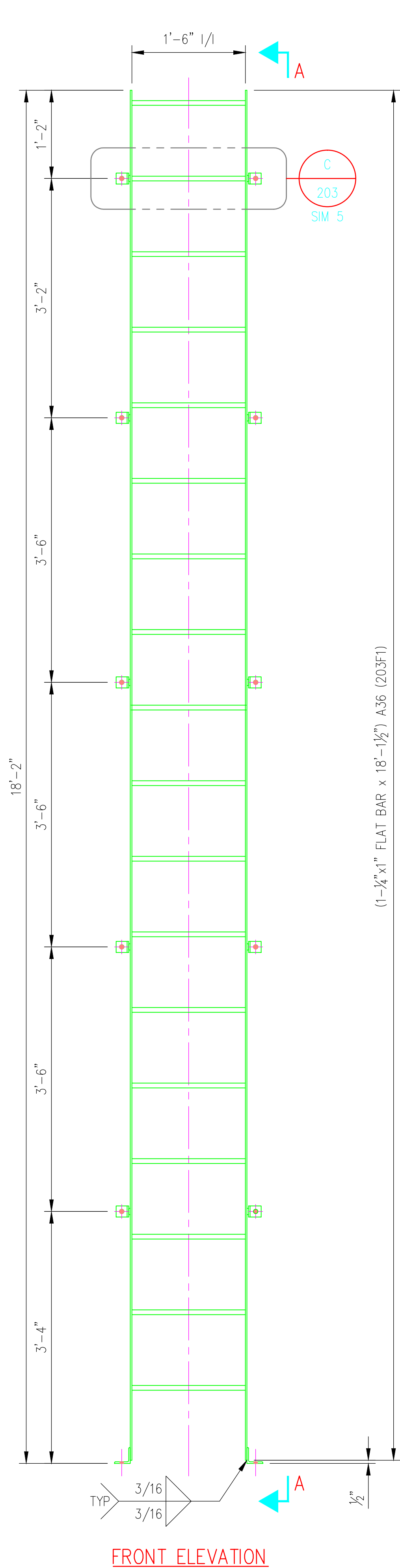


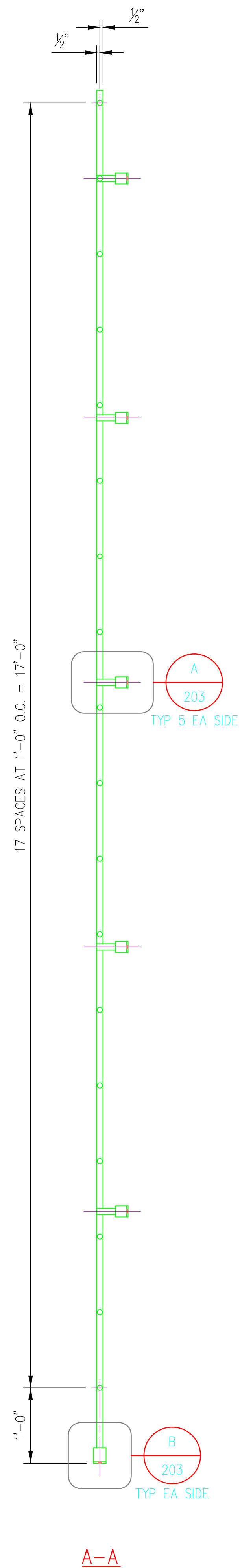
©2016 ANDY'S BEST CAD. ALL RIGHTS RESERVED. THIS DRAWING IS THE PROPERTY OF ANDY'S BEST CAD AND IS PROTECTED BY COPYRIGHT LAWS OF THE UNITED STATES OF AMERICA. ANY UNAUTHORIZED USE OF THE INFORMATION CONTAINED HEREIN OR PART THEREOF IS STRICTLY PROHIBITED. RECEIPT BY POSSESSOR THEREOF DOES NOT CONVEY OR TRANSFER ANY RIGHT TO MAKE, COPY, MANUFACTURE AND/OR SELL EITHER THE DRAWING OR THE ITEMS SHOWN THEREIN.



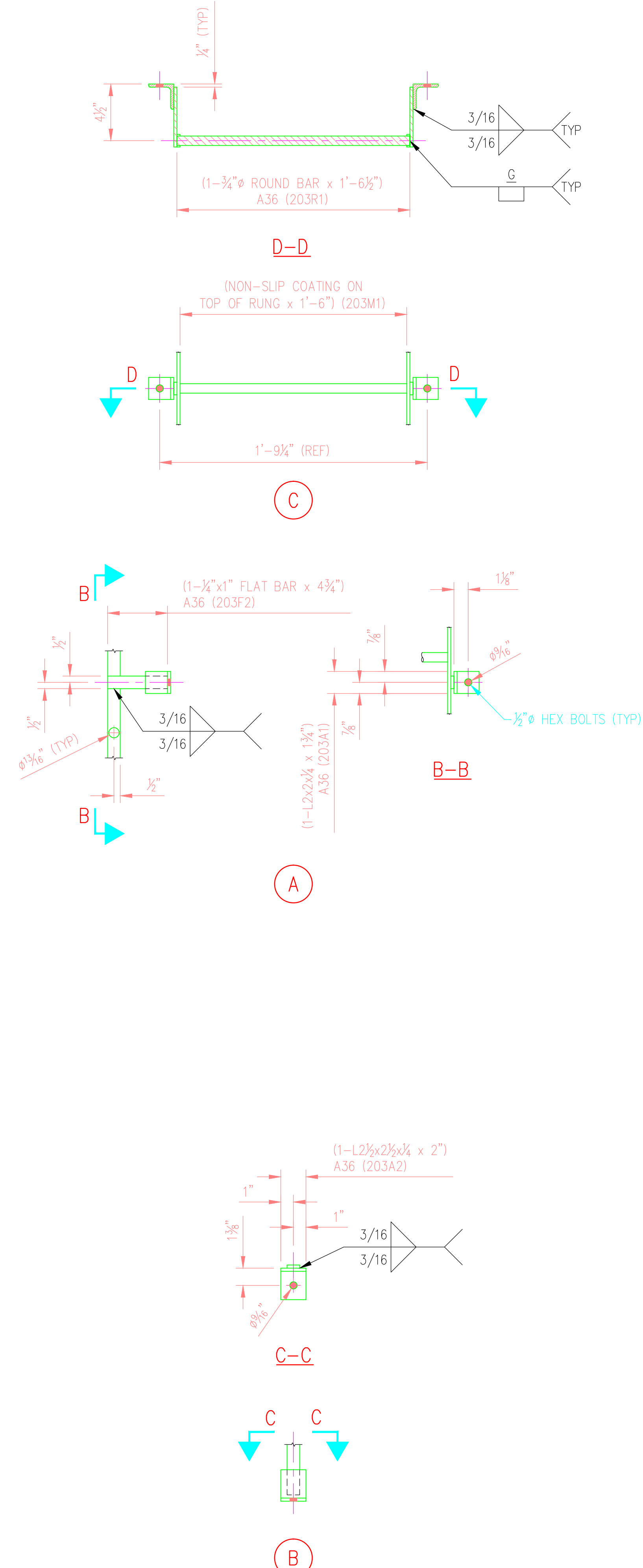
FRONT ELEVATION

ROOF LADDER
SCALE: 1"=1'-0"

203
ONE REQ'D



A-A



B

A

C

D-D

BILL OF MATERIAL							
ITEM NO.	SHIP MARK	PIECE MARK	NO. OF PIECES	DESCRIPTION	LENGTH		REMARKS
					FEET	INCHES	
			1	ROOF LADDER			
		203	2	1/4"x1" FLAT BAR	18	1 1/2	A36
		203R1	18	3/4"Ø ROUND BAR	1	6 1/2	A36
		203F2	10	1/4"x1" FLAT BAR	0	4 3/4	A36
		203A1	10	L2x2x1/4	0	1 3/4	A36
		203A2	2	L2 1/2x2 1/2x1/4	0	2	A36
		203M1	18	NON-SLIP COATING ON TOP OF RUNG	1	6	A36
				FIELD BOLTS			
			10	1/2"Ø HEX BOLT	0	?	A325
			2	1/2"Ø EXPANSION ANCHOR	0	4 1/2	ZINC PLATED

DATE:	
REV:	
REVISION DESCRIPTION:	

ENGINEER'S STAMP

ANDY'S BEST CAD
1323 CARLYLE PARK CIRCLE
HIGHLANDS RANCH, CO 80129
303-808-3352
WWW.ANDYSBESTCAD.COM

DRAWN: A. LANDT
DESIGNED: A. LANDT
CLIENT: 02/15/16
DATE: AS NOTED
SCALE: AS NOTED

PROJECT:

MATERIAL, COATING & FABRICATION SPECIFICATIONS

MATERIALS & FABRICATION	COATINGS
ALL TUBE SECTIONS: A500 GRADE B	FINISH-ONE SHOP COAT PRIMER
ALL PIPES: A53, GR. B, SCH. 40	
WIDE FLANGES, PLATES & BARS: A36	
ALL OTHER STEEL: A36	
WELDED, HEADED ANCHOR STUDS: A108	
HEADED ANCHOR BOLTS: A307	
INDOOR ANCHOR BOLTS: A307	
OUTDOOR ANCHOR BOLTS: TYPE 304 SSTL	
ALL WELDING: AWS D1.1	
SURFACE PREP: SSPC-SP6	
SCALE: AS NOTED	

DRAWING TITLE:
ROOF LADDER DETAILS

DRAWING NO.:
S07/203
OF

