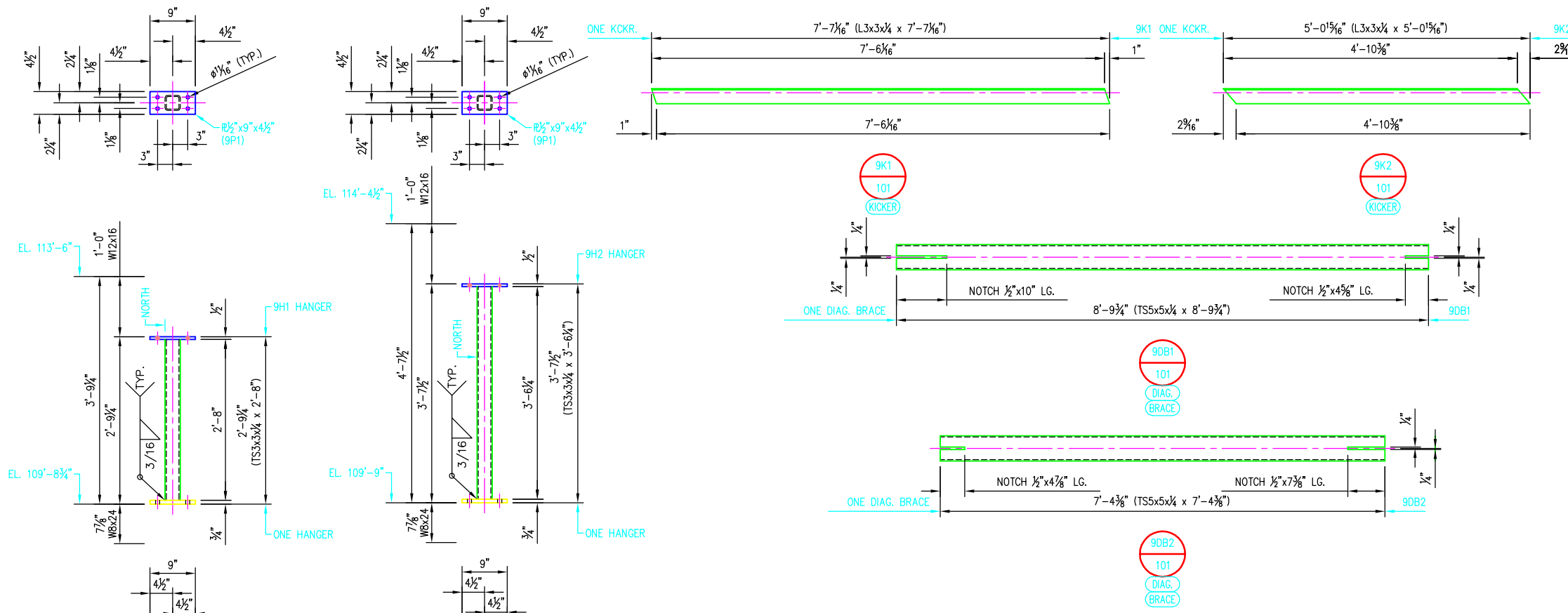
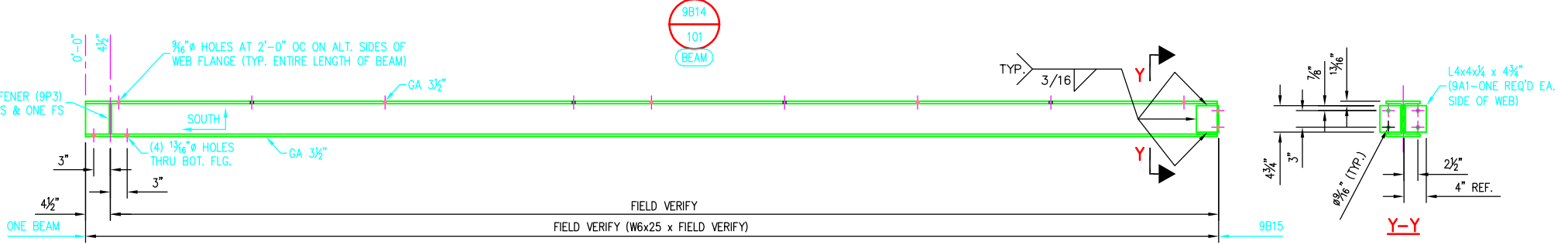
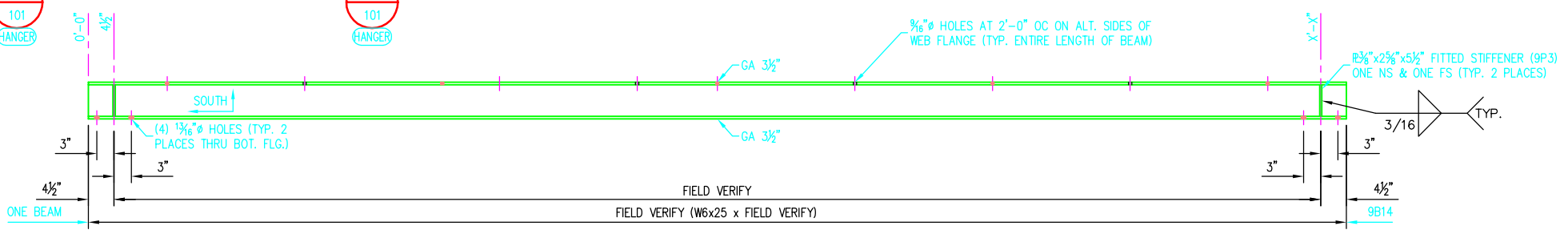


© 2007 ANDY'S BEST CAD. ALL RIGHTS RESERVED. THIS DRAWING IS THE PROPERTY OF ANDY'S BEST CAD AND IS PROTECTED BY COPYRIGHT LAWS OF THE UNITED STATES OF AMERICA. ANY UNAUTHORIZED USE OF THE INFORMATION CONTAINED HEREIN OR PART THEREOF IS STRICTLY PROHIBITED. REPEAT OR POSSESSION THEREOF DOES NOT CONVEY OR TRANSFER ANY RIGHT TO MAKE, COPY, MANUFACTURE AND/OR SELL EITHER THE DRAWING OR THE ITEMS SHOWN THEREIN.



REQ'D FASTENERS-9B14

QTY	SPEC	LENGTH
8	3/4" (A325)	2 1/2"
9	1/2" (A325)	CONFIRM FASTENER TYPE TO EX. BEAM



REQ'D FASTENERS-9B15

QTY	SPEC	LENGTH
4	3/4" (A325)	2 1/2"
4	1/2" THRU BOLT (A325) W/2 HEX NUTS, 1 FLAT WASHER & 1 OVERSIZE WASHER EA.	9"
9	1/2" (A325)	CONFIRM FASTENER TYPE TO EX. BEAM

BILL OF MATERIAL

MARK	QTY	DESCRIPTION	FT	IN	REMARKS
9H1	1	TS3x3x1/4	2	8	
9P1	1	R3/4x9	0	4 1/2	
9P2	1	R3/4x9	0	6 1/2	
9H2	1	TS3x3x1/4	3	6 1/4	
9P1	1	R3/4x9	0	4 1/2	
9P2	1	R3/4x9	0	6 1/2	
9B14	1	W6x25			FIELD VERIFY
9P3	4	R3/4x2 1/2	0	5 1/2	FITTED STIFF.
9B15	1	W6x25			FIELD VERIFY
9A1	2	L4x4x1/4	0	4 3/4	
9P3	2	R3/4x2 1/2	0	5 1/2	FITTED STIFF.
9K1	1	L3x3x1/4	7	7 1/8	
9K2	1	L3x3x1/4	5	0 1/8	
9DB1	1	TS5x5x1/4	8	9 1/4	
9DB2	1	TS5x5x1/4	7	4 3/8	

MATERIAL, COATING & FABRICATION SPECIFICATIONS

MATERIALS & FABRICATION	COATINGS
ALL TUBE SECTIONS: A500 GRADE B	
ALL PIPES: A53, GR. B, SCH. 40	
WIDE FLANGES, PLATES & BARS: A36	
ALL OTHER STEEL: A36	
WELDED, HEADED ANCHOR STUDS: A108	
HEADED ANCHOR BOLTS: A307	
INDOOR ANCHOR BOLTS: A307	
OUTDOOR ANCHOR BOLTS: A123, GALV.	
ALL WELDING: AWS D1.1	
SURFACE PREP: SSPC-SP6	
SCALE: AS NOTED	

DATE: _____

REVISION DESCRIPTION:

ENGINEER'S STAMP

ANDY'S BEST CAD
9715 SOUTH MERIBULA STREET
LITTLETON, COLORADO 80130
303-791-1622
WWW.ANDYSBESTCAD.COM

DRAWN: A.LANDT
DESIGNED: _____
CLIENT: _____
DATE: 06/27/07
SCALE: AS SHOWN

PROJECT:

DRAWING TITLE: MISCELLANEOUS STEEL-SHEET 1

DRAWING NO.: S06/209
OF _____