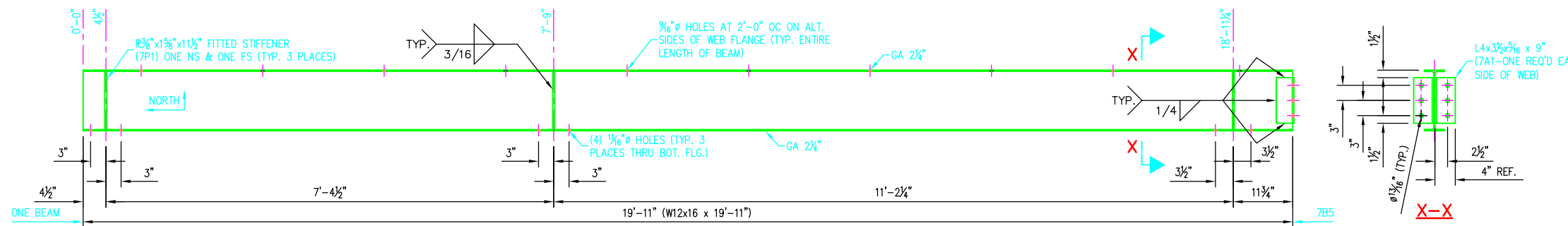
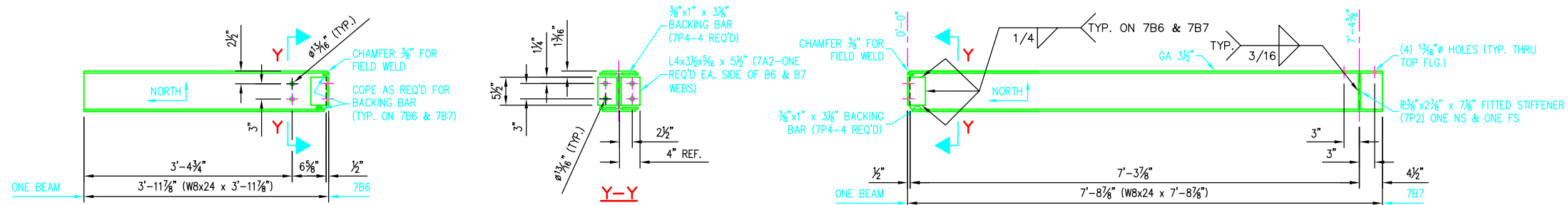


© 2007 ANDY'S BEST CAD. ALL RIGHTS RESERVED. THIS DRAWING IS THE PROPERTY OF ANDY'S BEST CAD AND IS PROTECTED BY COPYRIGHT LAWS OF THE UNITED STATES OF AMERICA. ANY UNAUTHORIZED USE OF THE INFORMATION CONTAINED HEREIN OR PART THEREOF IS STRICTLY PROHIBITED. REPEAT OR POSSESSION THEREOF DOES NOT CONVEY OR TRANSMIT ANY RIGHT TO MAKE, COPY, MANUFACTURE AND/OR SELL EITHER THE DRAWING OR THE ITEMS SHOWN THEREIN.



W12x16		REQ'D FASTENERS-7B5		
		QTY	SPEC	LENGTH
WEB	12x4			
FLANGE	4x4	12	3/8" (A325)	2"
		10	1/2" (A325)	2 1/2"

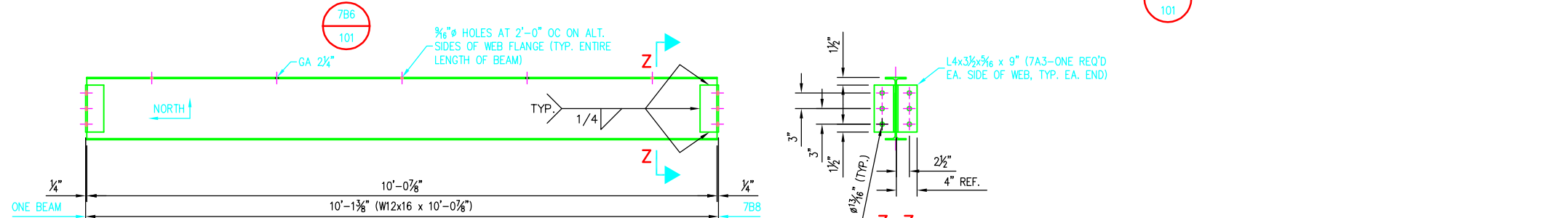
7B5
101



W8x24		REQ'D FASTENERS-7B6		
		QTY	SPEC	LENGTH
WEB	7 1/2 x 4			
FLANGE	6 1/2 x 3	4	3/4" (A325)	2 1/4"
		2	3/4" (A325)	2"

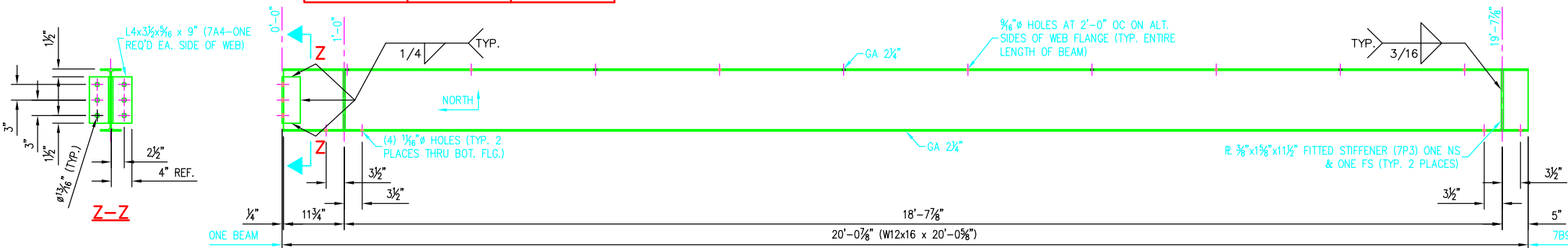
W8x24		REQ'D FASTENERS-7B7		
		QTY	SPEC	LENGTH
WEB	7 1/2 x 4			
FLANGE	6 1/2 x 3	4	3/4" (A325)	2 1/2"

7B7
101



W12x16		REQ'D FASTENERS-7B8		
		QTY	SPEC	LENGTH
WEB	12x4			
FLANGE	4x4	12	3/4" (A325)	2"
		5	1/2" (A325)	2 1/2"

7B8
101



W12x16		REQ'D FASTENERS-7B9		
		QTY	SPEC	LENGTH
WEB	12x4			
FLANGE	4x4	8	3/4" (A325)	2"
		10	1/2" (A325)	2 1/2"

7B9
101

BILL OF MATERIAL

MARK	QTY	DESCRIPTION	FT	IN	REMARKS
7B5	1	W12x16	19	11	
7P1	6	R 3/8"x1 1/2"	0	11 1/2	FITTED STIFF.
7A1	2	L4x3 1/2 x 3/16	0	9	
7B6	1	W8x24	3	11 1/2	
7A2	2	L4x3 1/2 x 3/16	0	5 1/2	MOMENT CONN.
7P4	4	R 3/8"x1	0	3 1/2	SHIP LOOSE
7B7	1	W8x24	7	8 1/2	
7A2	2	L4x3 1/2 x 3/16	0	5 1/2	MOMENT CONN.
7P2	2	R 3/8"x2 1/2	0	7 1/2	FITTED STIFF.
7P4	4	R 3/8"x1	0	3 1/2	SHIP LOOSE
7B8	1	W12x16	10	0 7/8	
7A3	4	L4x3 1/2 x 3/16	0	9	
7B9	1	W12x16	20	0 5/8	
7A4	2	L4x3 1/2 x 3/16	0	9	
7P3	4	R 3/8"x1 1/2"	0	11 1/2	FITTED STIFF.

DATE:	
REVISION DESCRIPTION:	
ENGINEER'S STAMP:	

ANDY'S BEST CAD
9715 SOUTH MERIBULA STREET
LITTLETON, COLORADO 80130
303-791-1622
WWW.ANDYSBESTCAD.COM

DRAWN: A.LANDT
DESIGNED: 06/27/07
CLIENT: AS SHOWN
DATE: AS SHOWN
SCALE: AS SHOWN

PROJECT: BEAMS-SHEET 2

MATERIAL, COATING & FABRICATION SPECIFICATIONS

MATERIALS & FABRICATION	COATINGS
ALL TUBE SECTIONS: A500 GRADE B	
ALL PIPES: A53, GR. B, SCH. 40	
WIDE FLANGES, PLATES & BARS: A36	
ALL OTHER STEEL: A36	
WELDED, HEADED ANCHOR STUDS: A108	
HEADED ANCHOR BOLTS: A307	
INDOOR ANCHOR BOLTS: A307	
OUTDOOR ANCHOR BOLTS: A123, GALV.	
ALL WELDING: AWS D1.1	
SURFACE PREP: SSPC-SP6	
SCALE: AS NOTED	

DRAWING NO.: S06/207
OF