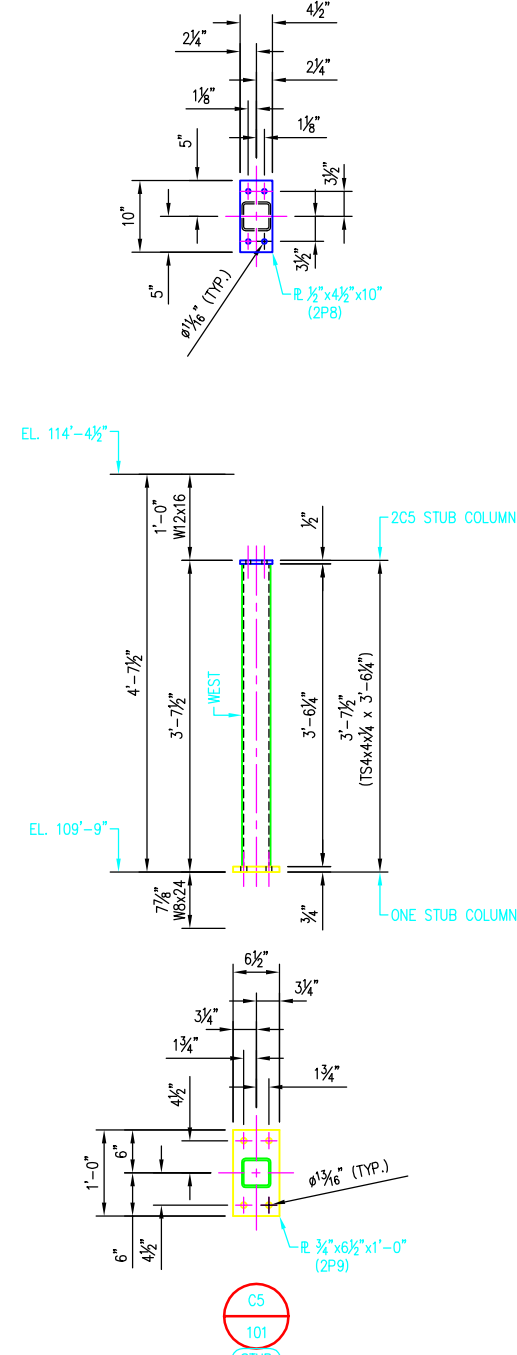
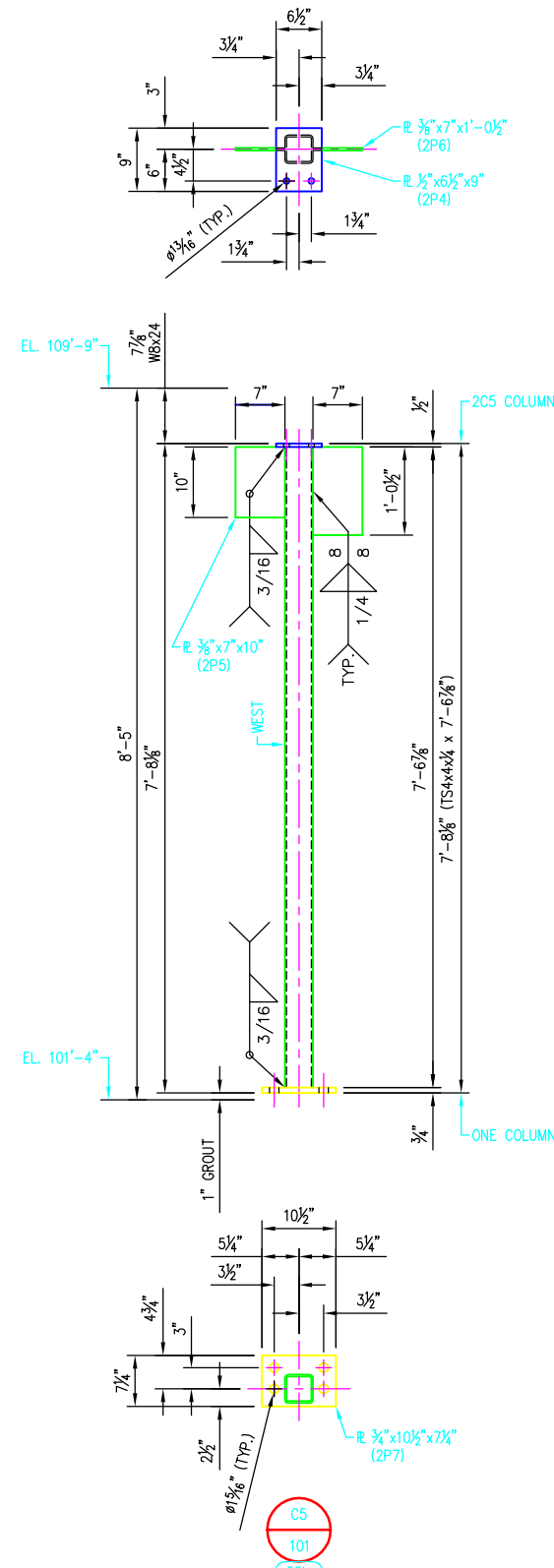
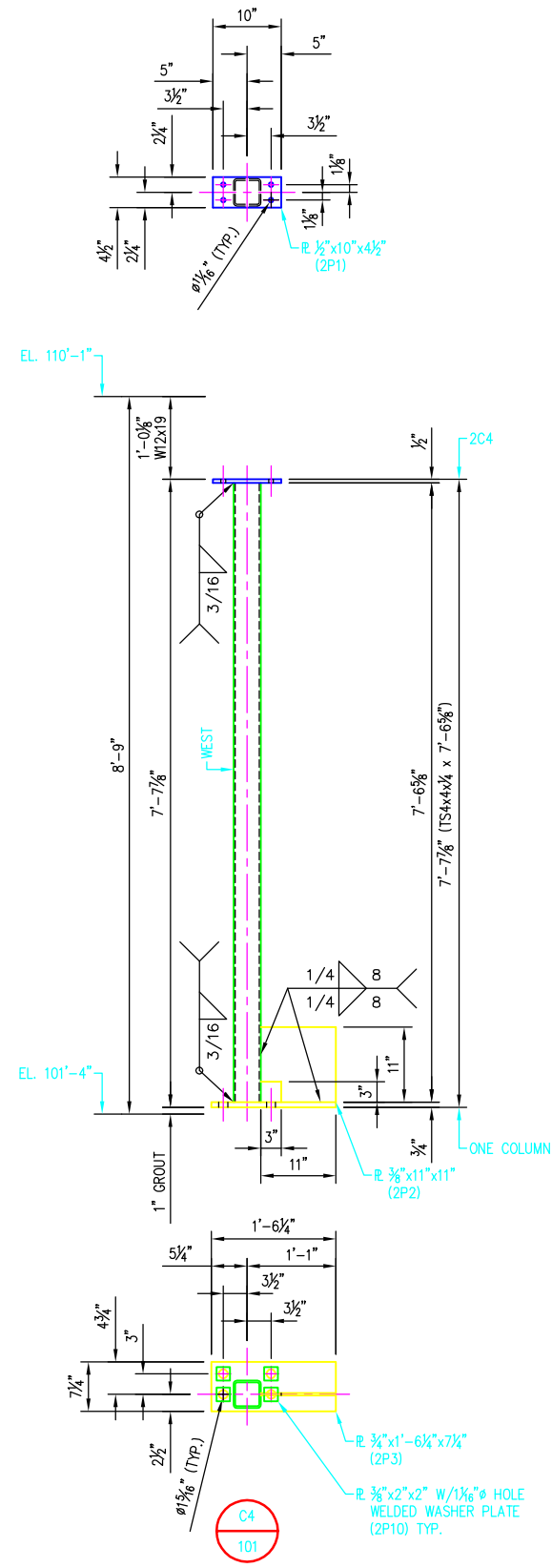


©2007 ANDY'S BEST CAD. ALL RIGHTS RESERVED. THIS DRAWING IS THE PROPERTY OF ANDY'S BEST CAD AND IS PROTECTED BY COPYRIGHT LAWS OF THE UNITED STATES OF AMERICA. ANY UNAUTHORIZED USE OF THE INFORMATION CONTAINED HEREIN OR PART THEREOF IS STRICTLY PROHIBITED. RECEIPT OR POSSESSION THEREOF DOES NOT CONVEY OR TRANSFER ANY RIGHT TO MAKE COPY, MANUFACTURE AND/OR SELL EITHER THE DRAWING OR THE ITEMS SHOWN THEREON.



BILL OF MATERIAL

MARK	QTY	DESCRIPTION	FT	IN	REMARKS
2C4	1	TS4x4x4 1/2	7	6 1/2	
2P1	1	R 1/2 x 10	0	4 1/2	
2P2	1	R 3/8 x 11	0	11	
2P3	1	R 3/4 x 1 - 6 1/4	0	7 1/4	
2P10	4	R 3/8 x 2	0	2	WASHER PLATE
2C5	1	TS4x4x4 1/2	7	6 1/2	COLUMN
2P4	1	R 1/2 x 6 1/2	0	9	
2P5	1	R 3/8 x 7	0	10	
2P6	1	R 3/8 x 7	1	0 1/2	
2P7	1	R 3/4 x 10 1/2	0	7 1/4	
2C5	1	TS4x4x4 1/2	3	6 1/2	STUB COLUMN
2P8	1	R 1/2 x 4 1/2	0	10	
2P9	1	R 3/4 x 6 1/2	1	0	
		ANCHOR BOLTS			
8		1" φ x 1'-6" LG. (ASTM F1554, GR. 36)			2" HOOKS

DATE:	
REV:	
REVISION DESCRIPTION:	

ENGINEER'S STAMP

ANDY'S BEST CAD
9715 SOUTH MERIBULA STREET
LITTLETON, COLORADO 80130
303-791-1622
WWW.ANDYSBESTCAD.COM

DRAWN: A LANDT
DESIGNED:
CLIENT: 06/27/07
DATE: AS SHOWN
SCALE:

MATERIAL, COATING & FABRICATION SPECIFICATIONS

MATERIALS & FABRICATION	COATINGS
ALL TUBE SECTIONS: A500 GRADE B	
ALL PIPES: A53, GR. B, SCH. 40	
WIDE FLANGES, PLATES & BARS: A36	
ALL OTHER STEEL: A36	
WELDED, HEADED ANCHOR STUDS: A108	
HEADED ANCHOR BOLTS: A307	
INDOOR ANCHOR BOLTS: A307	
OUTDOOR ANCHOR BOLTS: A123, GALV.	
ALL WELDING: AWS D1.1	
SURFACE PREP: SSPC-SP6	
SCALE: AS NOTED	

DRAWING TITLE: COLUMNS-SHEET 2

DRAWING NO.: S06/202
OF

