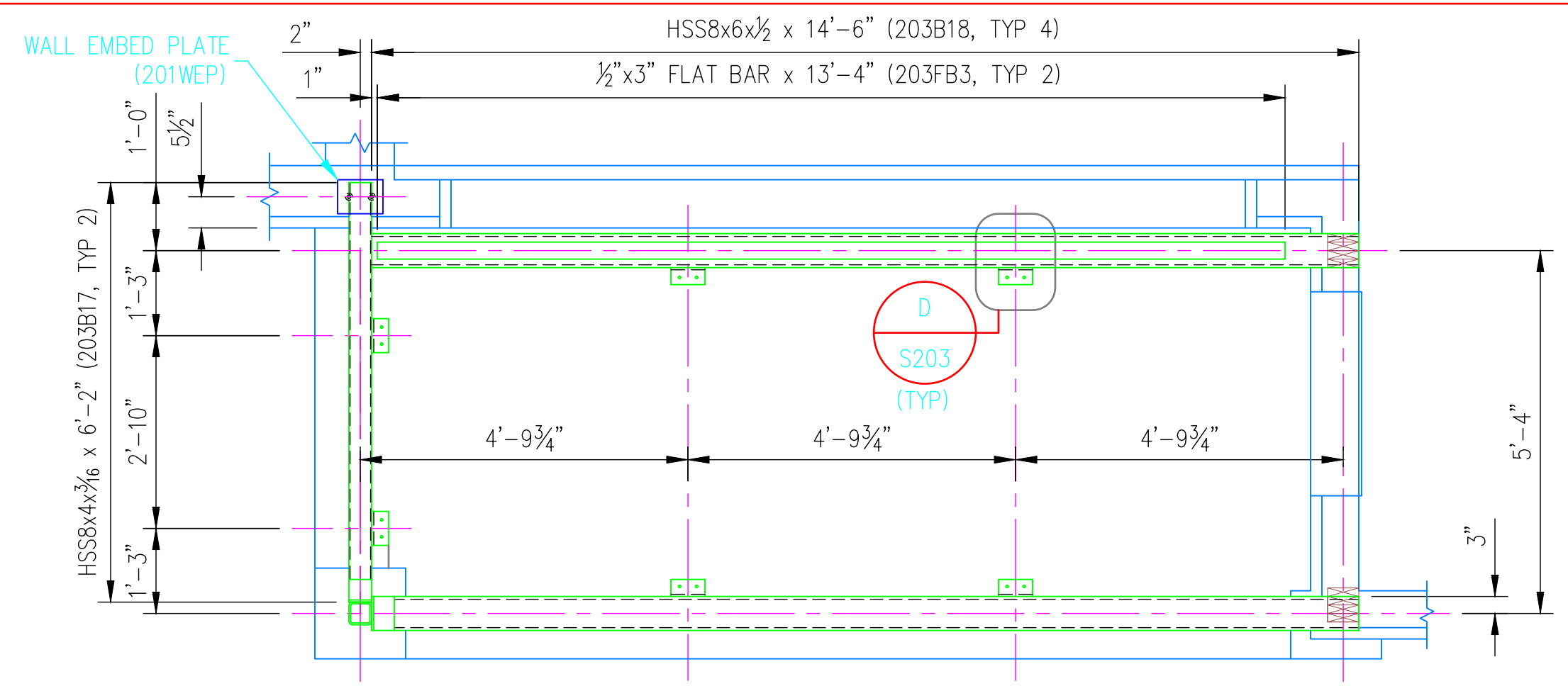
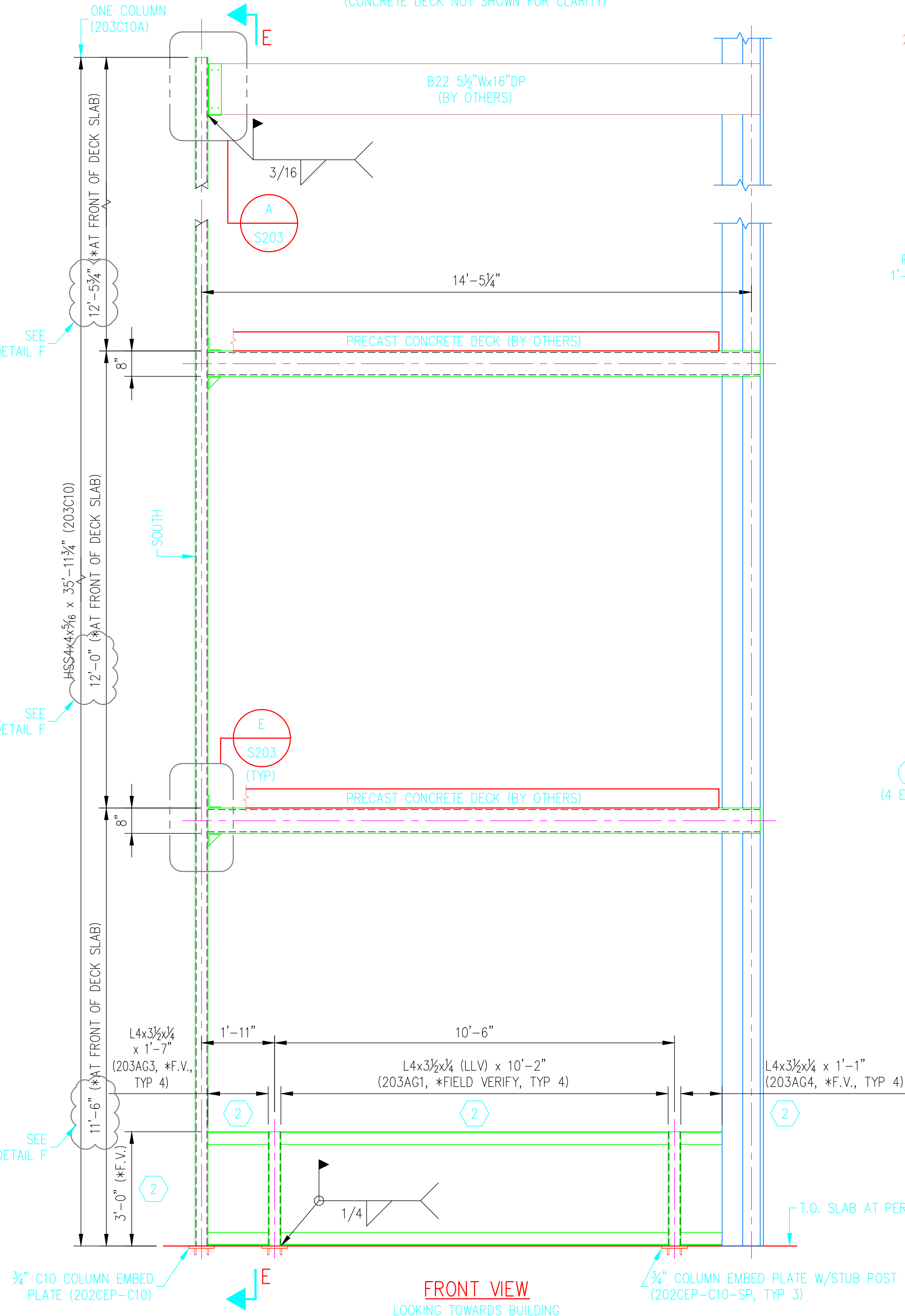


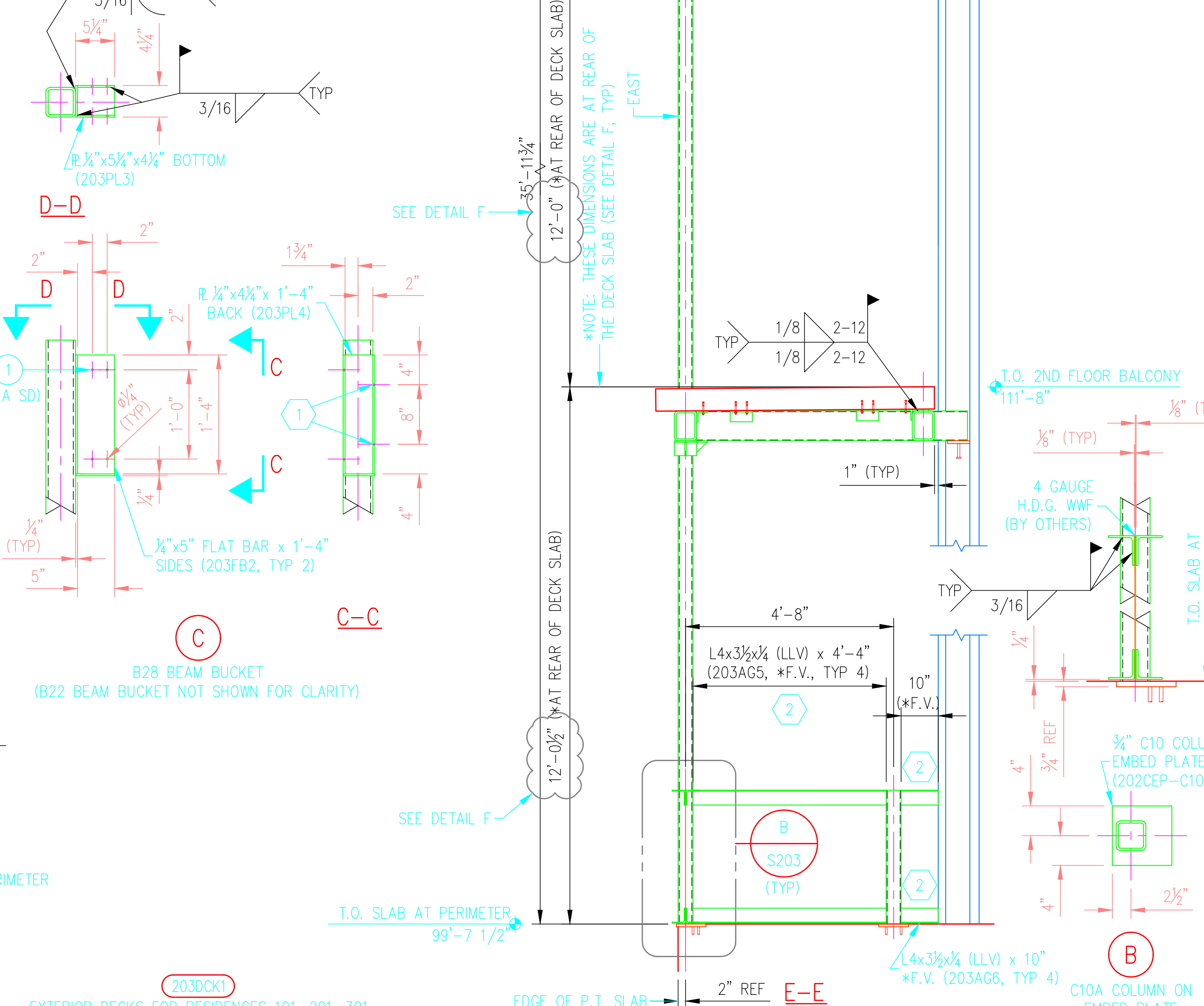
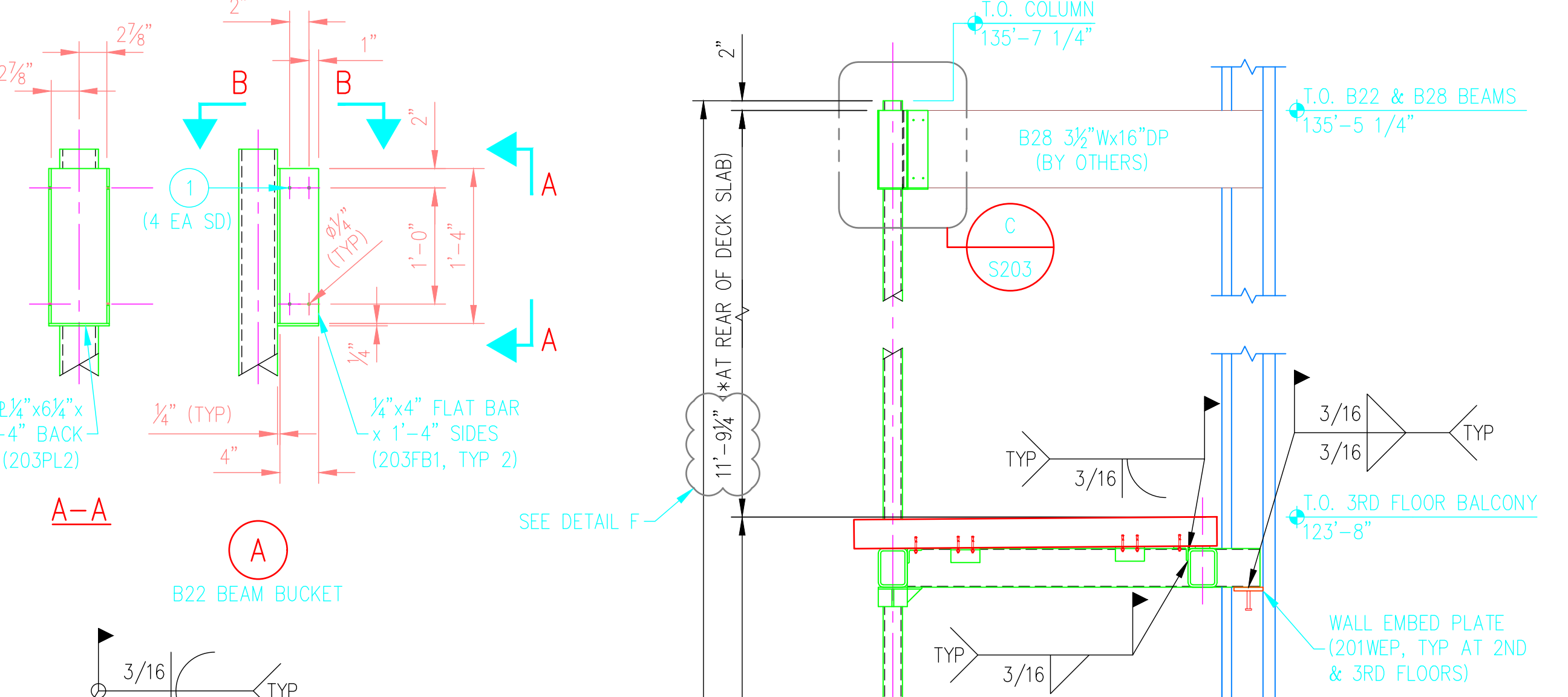
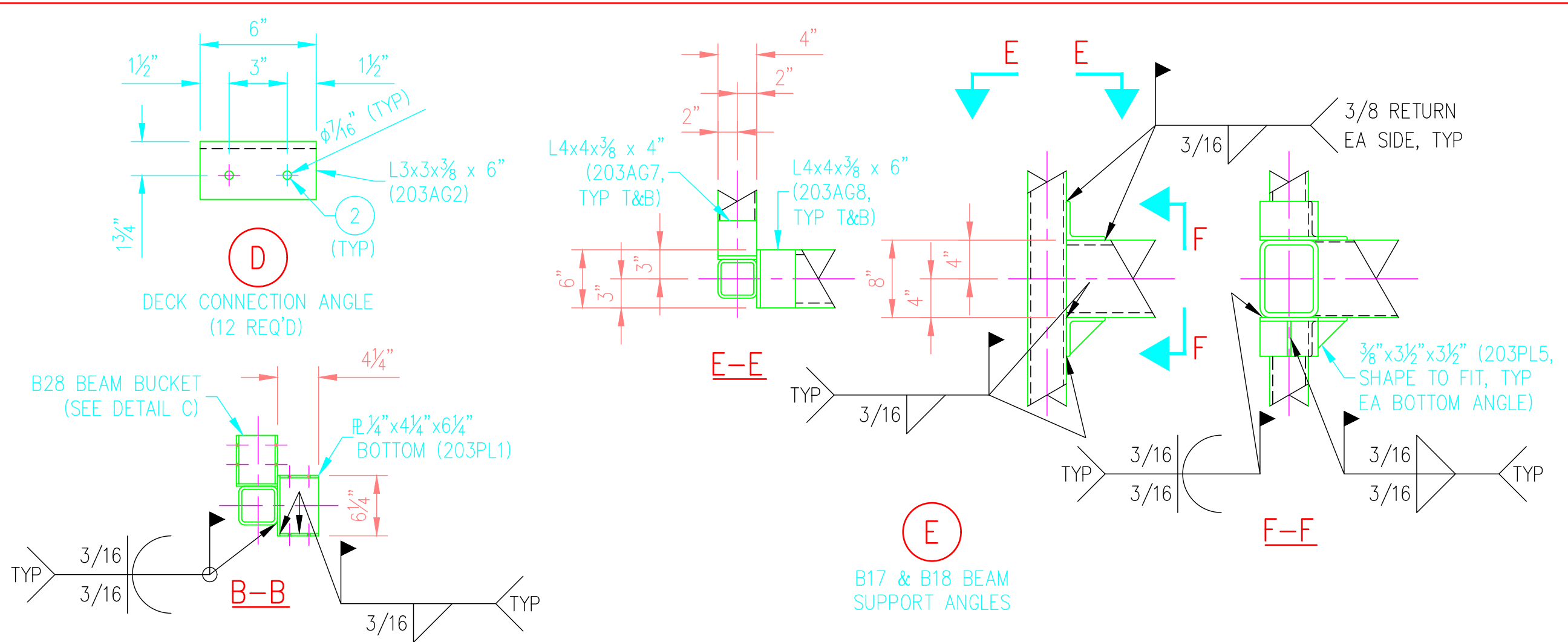
© 2021 ANDY'S BEST CAD. ALL RIGHTS RESERVED. THIS DRAWING IS THE PROPERTY OF ANDY'S BEST CAD AND IS PROTECTED BY COPYRIGHT LAWS OF THE UNITED STATES OF AMERICA. ANY UNAUTHORIZED USE OF THE INFORMATION CONTAINED HEREIN OR PART THEREOF IS STRICTLY PROHIBITED. RECEIPT OR POSSESSION THEREOF DOES NOT CONFER OR TRANSFER ANY RIGHT TO MAKE, COPY, MANUFACTURE AND/OR FOR SALE EITHER THE DRAWING OR THE ITEMS SHOWN THEREIN.



PLAN AT 3RD FLOOR BALCONY
 PLAN AT 2ND FLOOR BALCONY IS SAME
 (CONCRETE DECK NOT SHOWN FOR CLARITY)



FRONT VIEW
 LOOKING TOWARDS BUILDING

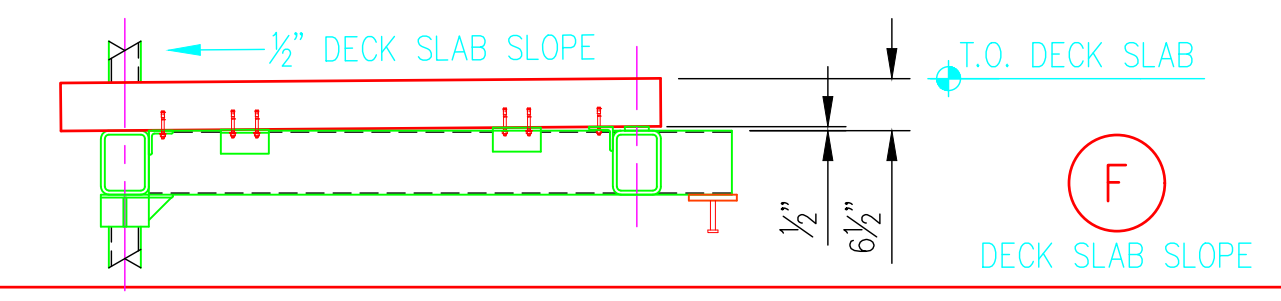


EXTERIOR DECKS FOR RESIDENCES 101, 201, 301

BILL OF MATERIAL

MARK	QTY	DESCRIPTION	FT	IN	REMARKS
203DCK1	1	EXTERIOR DECKS NO. 1	-	-	
203C10A	1	C10A COLUMN	-	-	
203C10	1	HSS4x4x3/16	35	11 3/4	
202CEP-C10	1	C10 EMBED PLATE	-	-	SEE SHEET S202
202CEP-C10-SP	3	C10 EMBED PLATE W/STUB POST	-	-	SEE SHEET S202
203B17	2	HSS8x4x3/16	6	2	
203B18	4	HSS8x6x1/2	14	6	
203AG1	4	L4x3 3/8 x 4	10	2	*FIELD VERIFY
203AG2	12	L3x3x3/8	0	6	
203AG3	4	L4x3 1/2 x 4	1	7	*FIELD VERIFY
203AG4	4	L4x3 1/2 x 4	1	1	*FIELD VERIFY
203PL1	1	1/4" x 4"	0	6 1/2	
203FB1	2	1/4" x 4" FLAT BAR	1	4	
203PL2	1	1/4" x 6"	1	4	
203PL3	1	1/4" x 5 1/2"	0	4 1/2	
203FB2	2	1/4" x 5" FLAT BAR	1	4	
203PL4	1	1/4" x 4"	1	4	
203FB3	2	1/2" x 3" FLAT BAR	13	4	
203AG5	4	L4x3 1/2 x 4	4	4	*FIELD VERIFY
203AG6	4	L4x3 3/8 x 4	0	10	*FIELD VERIFY
203AG7	4	L4x4x3/8	0	4	
203AG8	4	L4x4x3/8	0	6	
203PL5	4	1/4" x 3 1/2"	0	3 1/2	
1	16	1/4" x 2 1/2" LEDGER LOK SCREW			
2	24	3/8" x 3 1/2" EXPANSION ANCHOR (SSTL); SIMPSON STRONG-BOLT 2			

ALL SIZES SHOWN ARE FOR FINISHED MATERIALS



FABRICATION & GENERAL NOTES

1. STAGGER HOLES ON OPPOSITE SIDE PLATE TO ACCOMMODATE LEDGER LOK SCREW INSTALLATION.
2. FIELD VERIFY & COORDINATE ANGLE LENGTHS AND INSTALLATION HEIGHT WITH BRICK VENER, WHERE APPLICABLE.
3. FIELD VERIFY ALL DIMENSIONS & ATTACHMENTS PRIOR TO FABRICATION & ERECTION.
4. ALL FIELD WELDED CONNECTIONS SHALL BE CONTINUOUS, GROUND SMOOTH FOR FLUSH TRANSITIONS & PRIMER COATED. PROTECT EXISTING FINISHES DURING CONSTRUCTION.

MATERIAL, COATING & FABRICATION SPECIFICATIONS

MATERIALS & FABRICATION	COATINGS
ROLLED W SHAPES: ASTM A992, 50 ksi	
ROLLED CHANNELS, ANGLES, PLATES, M SHAPES: ASTM A36, 36 ksi	
PIPES: ASTM A53, GR B, SCH 40, BLACK	
HSS TUBES: ASTM A500, GR B, 46 ksi	
HEADED ANCHOR STUDS: ASTM A108	
FASTENERS: ASTM 325-N HIGH STRENGTH	
SURFACE PREP:	
WELDING: AWS D1.1, AWS A5.1 CLASS E70XX-LOW HYDROGEN ELECTRODES	DO NOT SCALE DRAWINGS. ALL DIMENSIONS IN FT & IN UNLESS NOTED OTHERWISE.

DATE: _____

REV: _____

REVISION DESCRIPTION: _____

ANDY'S BEST CAD
 1323 CARLYLE PARK CIRCLE
 HIGHLANDS RANCH, CO 80129
 303-808-3352
 WWW.ANDYSBESTCAD.COM

DRAWN: ABC
 DESIGNED: ABC
 CLIENT: 12/06/21
 DATE: 1/2"=1'-0"
 SCALE: _____

PROJECT: LUXURY CONDOMINIUMS DENVER, COLORADO STAIRCASE, DECK, EXT RAILING ARCH METALS SHOP DRAWINGS

DRAWING TITLE: EXTERIOR DECKS & C10A COLUMN FOR RESIDENCES 101, 201, 301

DRAWING NO.: S203
 or _____