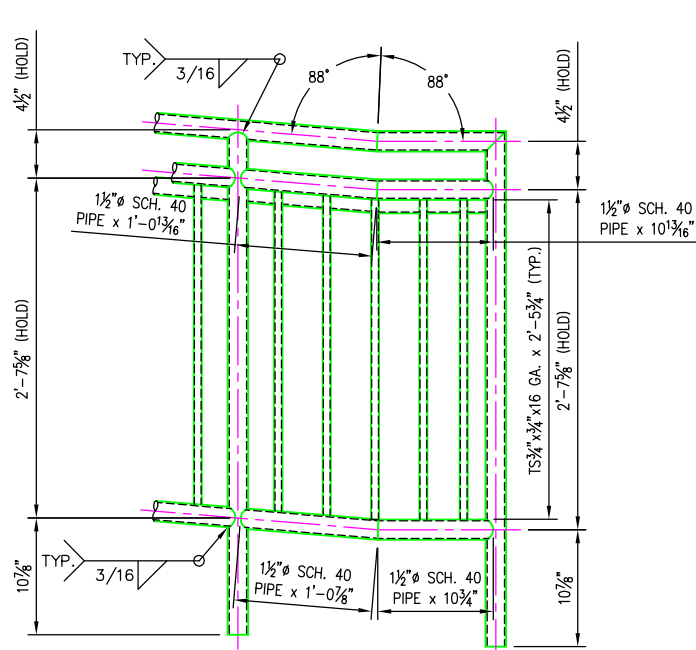
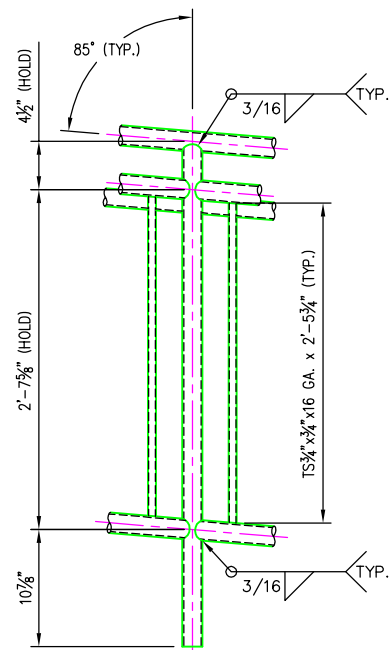


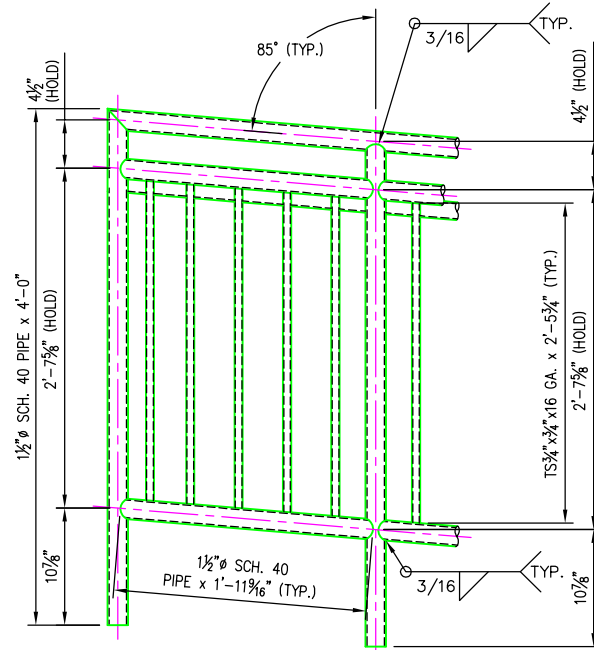
© 2009 ANDY'S BEST CAD. ALL RIGHTS RESERVED. THIS DRAWING IS THE PROPERTY OF ANDY'S BEST CAD AND IS PROTECTED BY COPYRIGHT LAWS OF THE UNITED STATES OF AMERICA. ANY UNAUTHORIZED USE OF THE INFORMATION CONTAINED HEREIN OR PART THEREOF IS STRICTLY PROHIBITED. REPEAT OR POSSESSION THEREOF DOES NOT CONVEY OR TRANSMIT ANY RIGHT TO MAKE, COPY, MANUFACTURE AND/OR SELL EITHER THE DRAWING OR THE ITEMS SHOWN THEREIN.



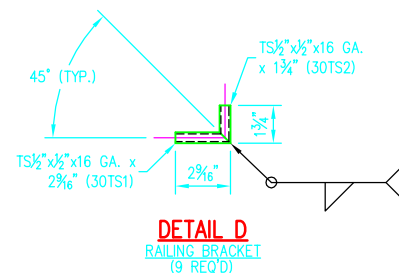
**ELEVATION  
DETAIL A  
OUTSIDE FACE**



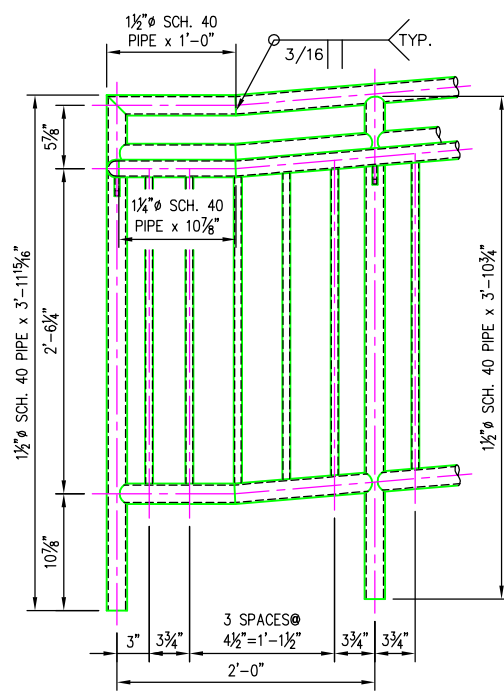
**ELEVATION  
DETAIL B  
OUTSIDE FACE**



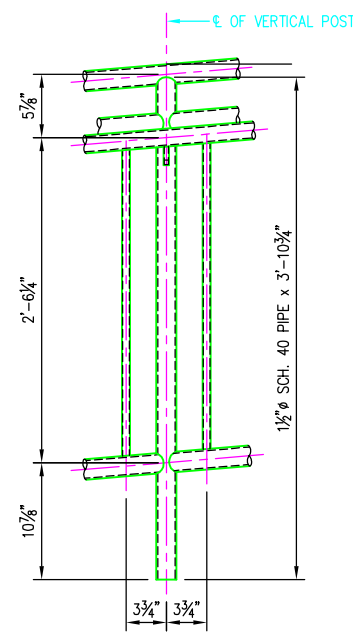
**ELEVATION  
DETAIL C  
OUTSIDE FACE**



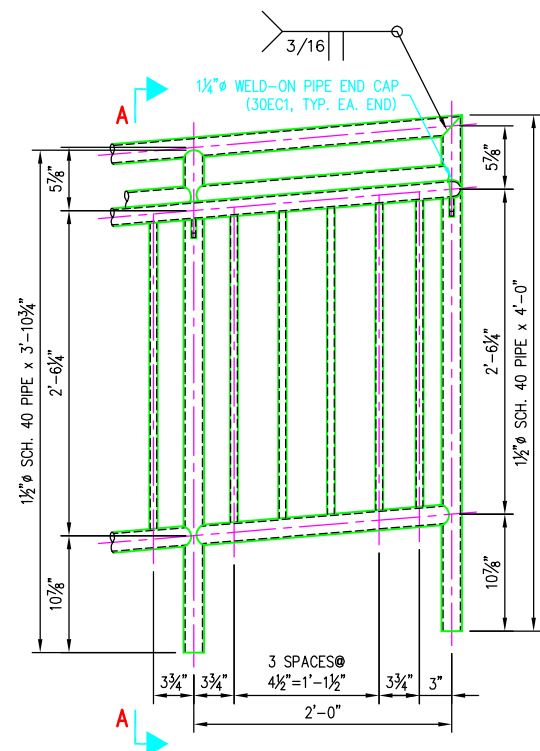
**DETAIL D  
RAILING BRACKET  
(9 REQ'D)**



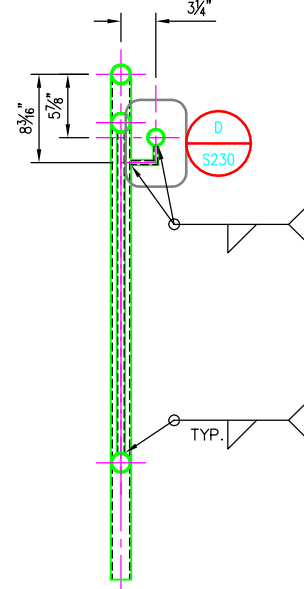
**ELEVATION  
DETAIL A  
INSIDE FACE**



**ELEVATION  
DETAIL B  
INSIDE FACE**



**ELEVATION  
DETAIL C  
INSIDE FACE**



**A-A  
(TYP.)**

**BILL OF MATERIAL**

MARK	QTY	DESCRIPTION	FT	IN	REMARKS
-	-	RAILING TYPE L3-UPPER & LOWER RAMP (ADD'L PARTS)			
30TS1	9	TS 1/2\" x 1/2\" x 16 GA.	0	2 3/8	
30TS2	9	TS 1/2\" x 1/2\" x 16 GA.	0	1 3/8	
30EC1	2	1 1/2\" WELD-ON PIPE END CAP			

DATE:	
REV:	
REVISION DESCRIPTION:	

ANDY'S BEST CAD  
9715 S. MERIMBULA ST.  
LITTLETON, CO 80130  
303-791-1622  
WWW.ANDYSBESTCAD.COM

DRAWN: A.LANDT  
DESIGNED: A.LANDT  
CLIENT: 05/04/09  
DATE: 1\"/>

UNIVERSITY  
ATHLETIC STADIUM  
STRUCTURAL STEEL  
HANDRAILS AND RAILINGS

PROJECT:

RAILING TYPE L3 DETAILS

DRAWING TITLE:

DRAWING NO.:  
**S230**  
OF

**FABRICATION NOTES**

1. REMOVE ALL BURRS FROM EXPOSED CUT EDGES.
2. EASE EXPOSED EDGES TO AN APPROXIMATE 1/32\"/>

**MATERIAL, COATING & FABRICATION SPECIFICATIONS**

MATERIALS & FABRICATION	COATINGS
ALL TUBE SECTIONS: A500 GR. B	SURFACES EMBEDDED IN CONCRETE SHALL NOT BE PAINTED.
ALL PIPES: A53, GR. B, SCH. 40	SURFACES TO BE FIELD WELDED SHALL NOT BE PAINTED.
PLATES: A36	PRIMER: ONE COAT, MIN. 3.0 MILS DFT, OF TNE-MEC, SERIES 90-97 TNE-M-ZINC, ZINC-RICH PRIMER.
WF, WT: A992	INTER. COAT: ONE COAT, MIN. 3.0 MILS DFT, OF TNE-MEC, SERIES N69-1255.
OTHER SHAPES: A36	TOP COAT: ONE COAT, MIN. 3.0 MILS DFT, OF TNE-MEC, SERIES 1077 ENDURALUME. TOP COAT SHALL BE DU STANDARD COLOR CRANBERRY.
HEADED ANCHOR STUDS: A108	
DEFORMED ANCHOR STUDS: A496	
ALL WELDING: AWS D1.1, E70 ELECTRODES	
SURFACE PREP: SSPC-SP10	

