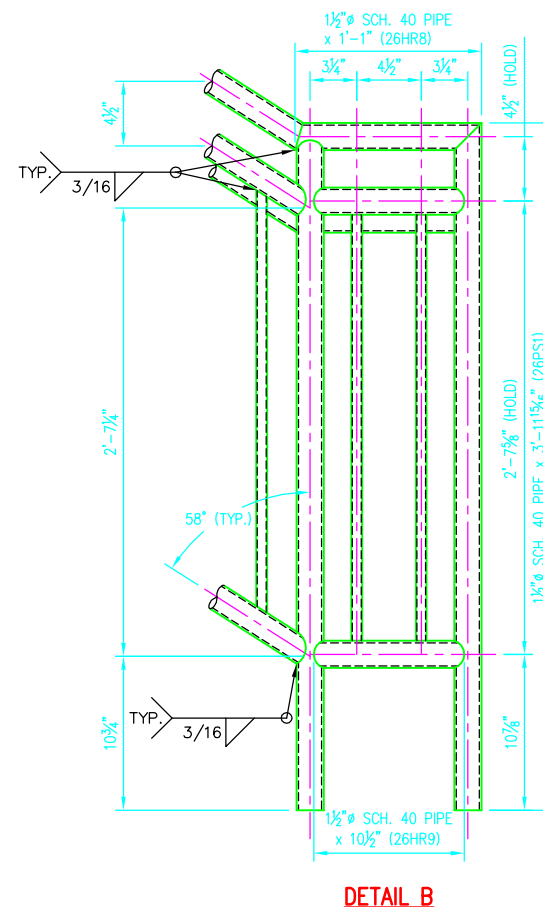
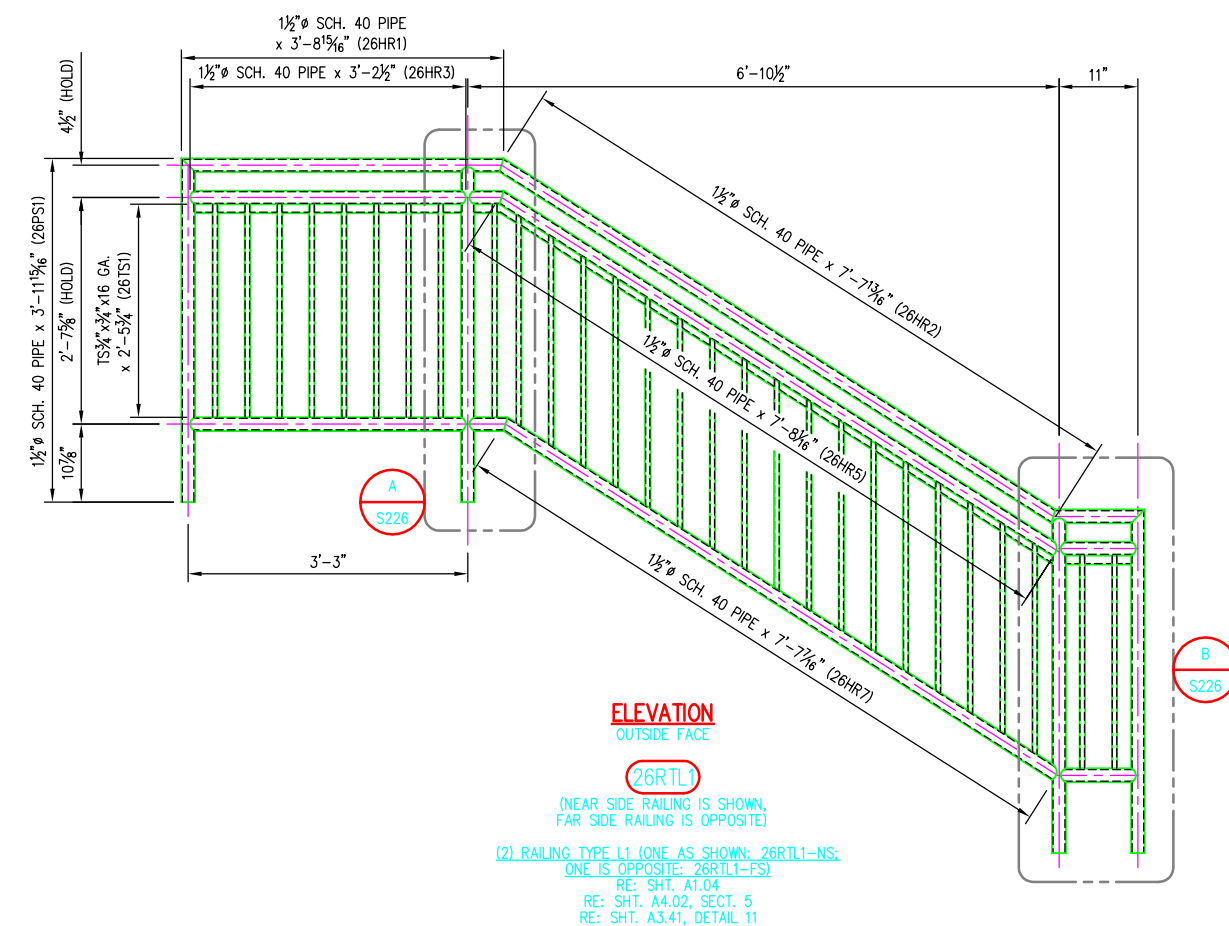
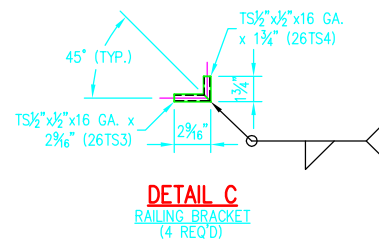
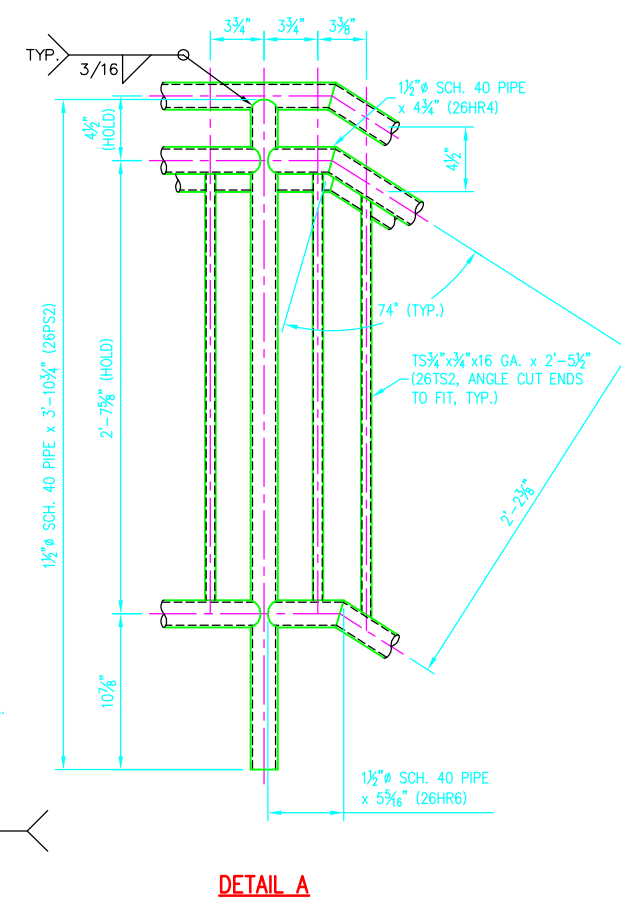
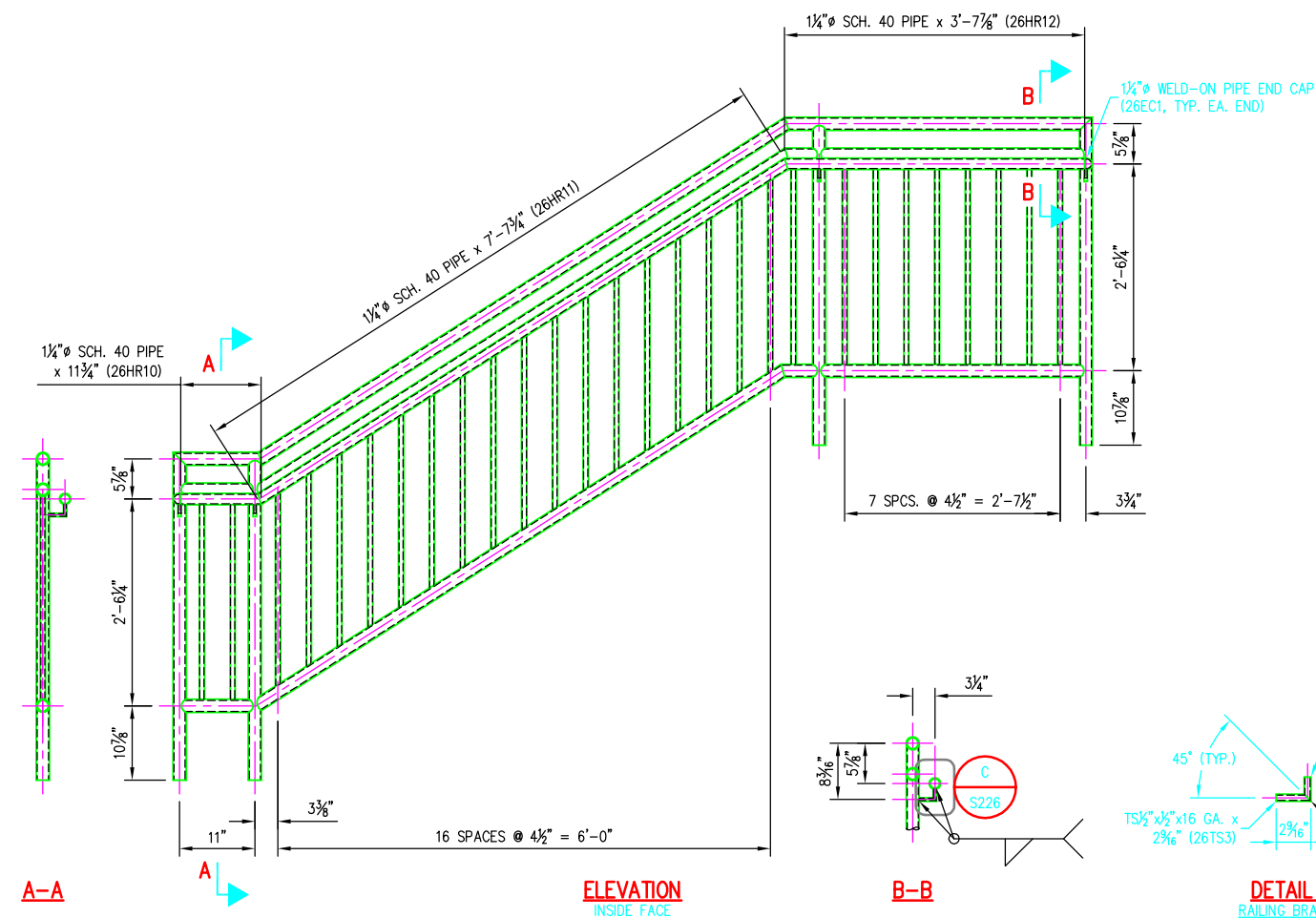


©2009 ANDY'S BEST CAD. ALL RIGHTS RESERVED. THIS DRAWING IS THE PROPERTY OF ANDY'S BEST CAD AND IS PROTECTED BY COPYRIGHT LAWS OF THE UNITED STATES OF AMERICA. ANY UNAUTHORIZED USE OF THE INFORMATION CONTAINED HEREIN OR PART THEREOF IS STRICTLY PROHIBITED. REPEAT OR POSSESSION THEREOF DOES NOT CONVEY OR TRANSFER ANY RIGHT TO MAKE, COPY, MANUFACTURE AND/OR SELL EITHER THE DRAWING OR THE ITEMS SHOWN THEREIN.



**BILL OF MATERIAL**

| MARK      | QTY | DESCRIPTION                 | FT | IN      | REMARKS |
|-----------|-----|-----------------------------|----|---------|---------|
| 26RTL1-NS | 1   | RAILING TYPE L1-NEAR SIDE   |    |         |         |
| 26HR1     | 1   | 1 1/2" SCH. 40 PIPE         | 3  | 9 3/8"  |         |
| 26HR2     | 1   | 1 1/2" SCH. 40 PIPE         | 7  | 8 1/8"  |         |
| 26HR3     | 2   | 1 1/2" SCH. 40 PIPE         | 3  | 2 3/4"  |         |
| 26HR4     | 1   | 1 1/2" SCH. 40 PIPE         | 0  | 5"      |         |
| 26HR5     | 1   | 1 1/2" SCH. 40 PIPE         | 7  | 8 5/8"  |         |
| 26HR6     | 1   | 1 1/2" SCH. 40 PIPE         | 0  | 5 3/8"  |         |
| 26HR7     | 1   | 1 1/2" SCH. 40 PIPE         | 7  | 7 1/8"  |         |
| 26HR8     | 1   | 1 1/2" SCH. 40 PIPE         | 1  | 1 1/4"  |         |
| 26HR9     | 2   | 1 1/2" SCH. 40 PIPE         | 0  | 10 3/4" |         |
| 26HR10    | 1   | 1 1/4" SCH. 40 PIPE         | 1  | 0"      |         |
| 26HR11    | 1   | 1 1/4" SCH. 40 PIPE         | 7  | 8"      |         |
| 26HR12    | 1   | 1 1/4" SCH. 40 PIPE         | 3  | 8 1/2"  |         |
| 26PS1     | 2   | 1 1/2" SCH. 40 PIPE         | 4  | 0 3/8"  |         |
| 26PS2     | 2   | 1 1/2" SCH. 40 PIPE         | 3  | 11"     |         |
| 26TS1     | 11  | TS 3/4" x 3/4" x 16 GA.     | 2  | 6"      |         |
| 26TS2     | 17  | TS 3/4" x 3/4" x 16 GA.     | 2  | 5 3/4"  |         |
| 26TS3     | 4   | TS 1/2" x 1/2" x 16 GA.     | 0  | 2 1/8"  |         |
| 26TS4     | 4   | TS 1/2" x 1/2" x 16 GA.     | 0  | 1 1/8"  |         |
| 26EC1     | 2   | 1 1/4" WELD-ON PIPE END CAP |    |         |         |

|           |   |                          |                       |  |  |
|-----------|---|--------------------------|-----------------------|--|--|
| 26RTL1-FS | 1 | RAILING TYPE L1-FAR SIDE | SAME BOM AS 26RTL1-NS |  |  |
|-----------|---|--------------------------|-----------------------|--|--|

DATE: \_\_\_\_\_  
 REV: \_\_\_\_\_  
 REVISION DESCRIPTION: \_\_\_\_\_  
 ANDY'S BEST CAD  
 9715 S. MERIBULA ST.  
 LITTLETON, CO 80130  
 303-791-1622  
 WWW.ANDYSBESTCAD.COM

DRAWN: A.LANDT  
 DESIGNED: A.LANDT  
 CLIENT: 05/04/09  
 DATE: 1"=1'-0"  
 SCALE: \_\_\_\_\_

PROJECT: UNIVERSITY ATHLETIC STADIUM STRUCTURAL STEEL HANDRAILS AND RAILINGS

**FABRICATION NOTES**

1. REMOVE ALL BURRS FROM EXPOSED CUT EDGES.
2. EASE EXPOSED EDGES TO AN APPROXIMATE 1/2" RADIUS.

**MATERIAL, COATING & FABRICATION SPECIFICATIONS**

| MATERIALS & FABRICATION               | COATINGS  |
|---------------------------------------|---|
| ALL TUBE SECTIONS: A500 GR. B         | SURFACES EMBEDDED IN CONCRETE SHALL NOT BE PAINTED.   |
| ALL PIPES: A53, GR. B, SCH. 40        | SURFACES TO BE FIELD WELDED SHALL NOT BE PAINTED.   |
| PLATES: A36                           | PRIMER: ONE COAT, MIN. 3.0 MILS DFT, OF TNE MEC, SERIES 90-97 TNE ME-ZINC, ZINC-RICH PRIMER.                              |
| WF, WT: A992                          | INTER. COAT: ONE COAT, MIN. 3.0 MILS DFT, OF TNE MEC, SERIES N69-1255.  |
| OTHER SHAPES: A36                     | TOP COAT: ONE COAT, MIN. 3.0 MILS DFT, OF TNE MEC, SERIES 1077 ENDURALUME. TOP COAT SHALL BE DU STANDARD COLOR CRANBERRY. |
| HEADED ANCHOR STUDS: A108             |   |
| DEFORMED ANCHOR STUDS: A496           |   |
| ALL WELDING: AWS D1.1, E70 ELECTRODES |   |
| SURFACE PREP: SSPC-SP10               |   |

DRAWING TITLE: RAILING TYPE L1  
 DRAWING NO.: S226  
 OF \_\_\_\_\_