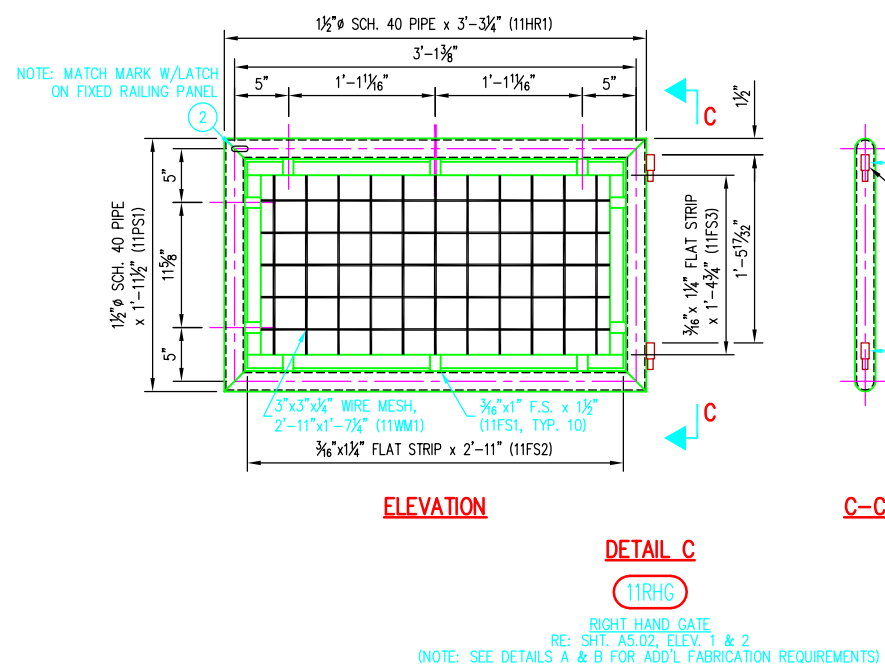
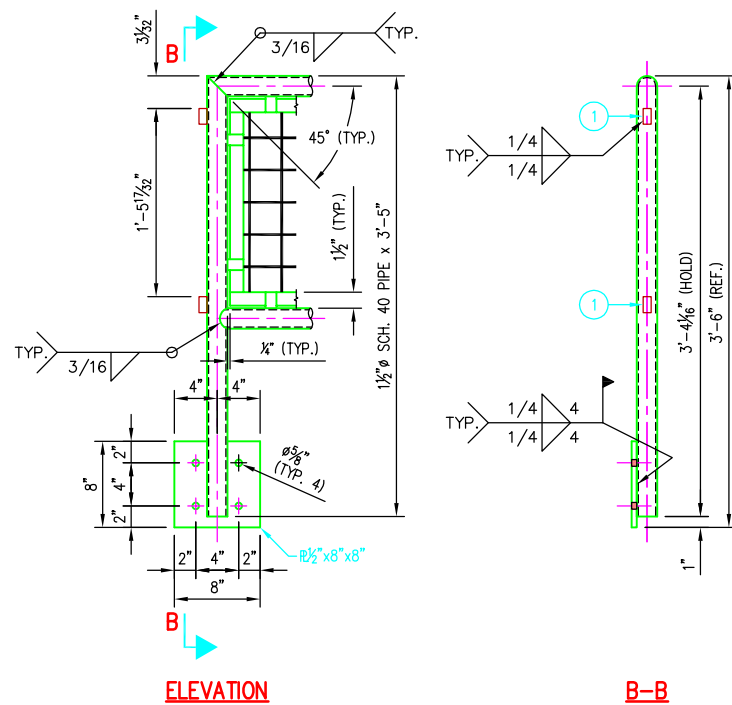
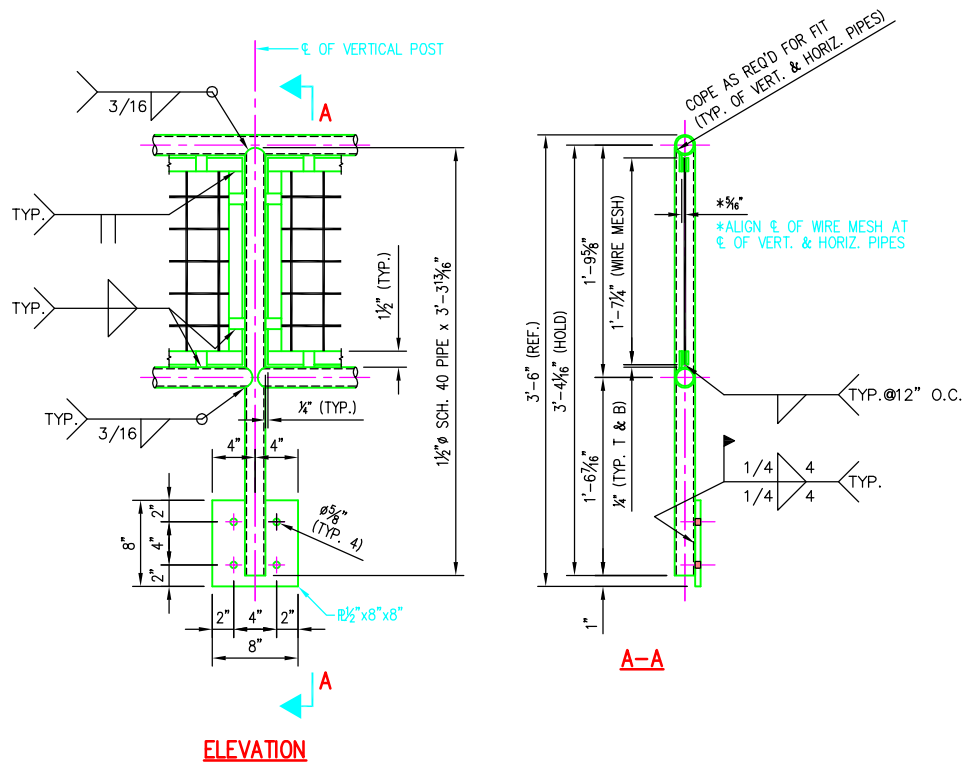


© 2009 ANDY'S BEST CAD. ALL RIGHTS RESERVED. THIS DRAWING IS THE PROPERTY OF ANDY'S BEST CAD AND IS PROTECTED BY COPYRIGHT LAWS OF THE UNITED STATES OF AMERICA. ANY UNAUTHORIZED USE OF THE INFORMATION CONTAINED HEREIN OR PART THEREOF IS STRICTLY PROHIBITED. EXCEPT BY PERMISSION THEREOF. REPEAT OR REPRODUCTION THEREOF WILL INFRINGE UPON THE RIGHTS OF THE ITEMS SHOWN THEREIN.



**BILL OF MATERIAL**

MARK	QTY	DESCRIPTION	FT	IN	REMARKS
11RHG	6	RIGHT HAND GATE ASSEMBLY			
11HR1	12	1 1/2" SCH. 40 PIPE	3	3 1/2	
11PS1	12	1 1/2" SCH. 40 PIPE	1	11 3/4	
11FS1	60	3/16" x 1" FLAT STRIP	0	1 1/8	
11FS2	24	3/16" x 1 1/4" FLAT STRIP	2	11 1/4	
11FS3	24	3/16" x 1 1/4" FLAT STRIP	1	5	
11WM1	6	3"x3"x3 1/2" WIRE MESH, 2'-11" x 1'-7 1/2"			3"x3" WIRE E TO E
①	12	3/4" BARREL HINGE			
②	6	GATE LATCH			WELD-ON

DATE:	
REV: REVISION DESCRIPTION:	
PROJECT:	
DRAWING TITLE:	
DATE:	
REV:	
PROJECT:	UNIVERSITY ATHLETIC STADIUM STRUCTURAL STEEL HANDRAILS AND RAILINGS
DRAWING TITLE:	RAILING TYPE D DETAILS

ANDY'S BEST CAD  
 9715 S. MERIMBULA ST.  
 LITTLETON, CO 80130  
 303-791-1622  
 WWW.ANDYSBESTCAD.COM

DRAWN: A.LANDT  
 DESIGNED: A.LANDT  
 CLIENT: UNIVERSITY ATHLETIC STADIUM  
 DATE: 05/04/09  
 SCALE: 1 1/2" = 1'-0"

**FABRICATION NOTES**

1. REMOVE ALL BURRS FROM EXPOSED CUT EDGES.
2. EASE EXPOSED EDGES TO AN APPROXIMATE 1/2" RADIUS.

**MATERIAL, COATING & FABRICATION SPECIFICATIONS**

MATERIALS & FABRICATION	COATINGS
ALL TUBE SECTIONS: A500 GR. B	SURFACES EMBEDDED IN CONCRETE SHALL NOT BE GALVANIZED.
ALL PIPES: A53, GR. B, SCH. 40	RAILINGS SHALL BE HOT DIPPED GALVANIZED AFTER FABRICATION PER ASTM A123.
PLATES: A36	
WF, WT: A992	
OTHER SHAPES: A36	
HEADED ANCHOR STUDS: A108	
DEFORMED ANCHOR STUDS: A496	
ALL WELDING: AWS D1.1, E70 ELECTRODES	
SURFACE PREP: SSPC-SP10	



DRAWING NO.:  
**S211**  
 OF