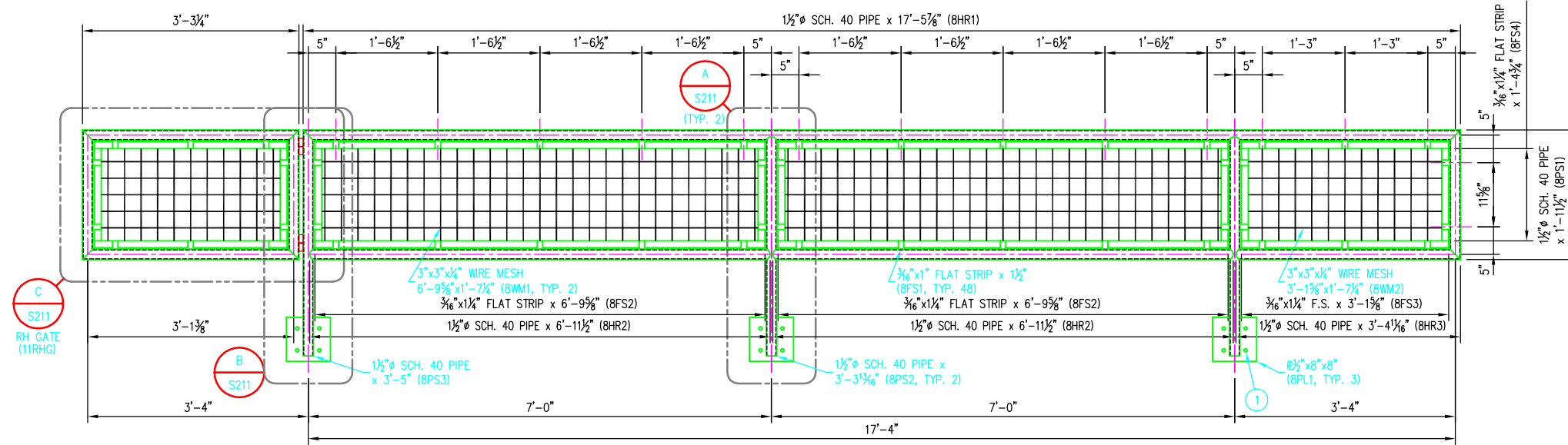


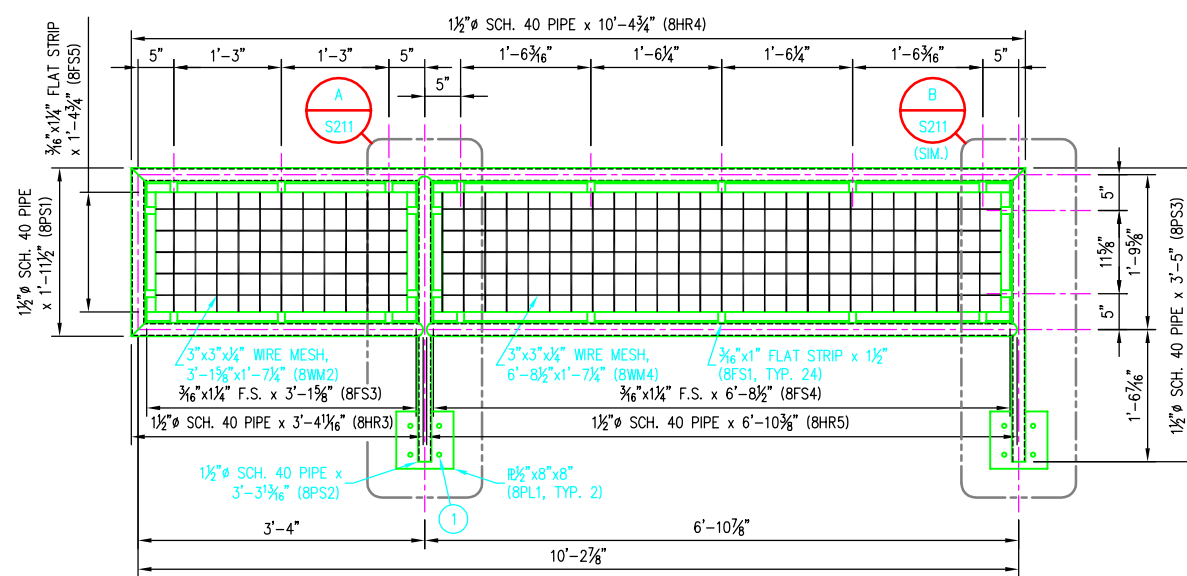
© 2009 ANDY'S BEST CAD. ALL RIGHTS RESERVED. THIS DRAWING IS THE PROPERTY OF ANDY'S BEST CAD AND IS PROTECTED BY COPYRIGHT LAWS OF THE UNITED STATES OF AMERICA. ANY UNAUTHORIZED USE OF THE INFORMATION CONTAINED HEREIN OR PART THEREOF IS STRICTLY PROHIBITED. REPEAT OR POSSESSION THEREOF DOES NOT CONVEY OR TRANSFER ANY RIGHT TO MAKE, COPY, MANUFACTURE AND/OR SELL EITHER THE DRAWING OR THE ITEMS SHOWN THEREIN.



ELEVATION

8RTD7

(3) RAILING TYPE D7
 RE: SHT. A5.02, ELEV. 1 & 2;
 RE: SHT. A3.41, DETAIL 4



ELEVATION

8RTD8

(1) RAILING TYPE D8
 RE: SHT. A5.02, ELEV. 1 & 2;
 RE: SHT. A3.41, DETAIL 4

BILL OF MATERIAL

MARK	QTY	DESCRIPTION	FT	IN	REMARKS
8RTD7	3	RAILING TYPE D7			
BHR1	3	1 1/2" SCH. 40 PIPE	17	6 3/8	
BHR2	6	1 1/2" SCH. 40 PIPE	6	11 3/4	
BHR3	3	1 1/2" SCH. 40 PIPE	3	4 1/8	
BPS1	3	1 1/2" SCH. 40 PIPE	1	11 3/4	
BPS2	6	1 1/2" SCH. 40 PIPE	3	4 1/8	
BPS3	3	1 1/2" SCH. 40 PIPE	3	5 1/4	
BFS1	144	3/16"x1" FLAT STRIP	0	1 3/8	
BFS2	24	3/16"x1 1/4" FLAT STRIP	6	9 3/8	
BFS3	12	3/16"x1 1/4" FLAT STRIP	3	1 3/8	
BFS4	36	3/16"x1 1/4" FLAT STRIP	1	5	
BPL1	9	Ø 1/2"x8"	0	8	
BWM1	6	3"x3"x 1/4" WIRE MESH, 6'-9 3/8" x 1'-7 1/4"	3"x3"	WIRE € TO €	
BWM2	3	3"x3"x 1/4" WIRE MESH, 3'-1 5/8" x 1'-7 1/4"	3"x3"	WIRE € TO €	
11RHG	3	RIGHT HAND GATE ASSEMBLY			SHT. S211
1	36	1/2"Øx3 3/4" LG. EXPANSION ANCHOR (SSTL); HILTI KB-TZ OR EQUAL			
BRTD8	1	RAILING TYPE D8			
BHR3	1	1 1/2" SCH. 40 PIPE	3	4 1/8	
BHR4	1	1 1/2" SCH. 40 PIPE	10	5	
BHR5	1	1 1/2" SCH. 40 PIPE	6	10 3/8	
BPS1	1	1 1/2" SCH. 40 PIPE	1	11 3/4	
BPS2	1	1 1/2" SCH. 40 PIPE	3	4 1/8	
BPS3	1	1 1/2" SCH. 40 PIPE	3	5 1/4	
BFS1	24	3/16"x1" FLAT STRIP	0	1 3/8	
BFS3	4	3/16"x1 1/4" FLAT STRIP	3	1 3/8	
BFS4	4	3/16"x1 1/4" FLAT STRIP	6	8 3/4	
BFS5	8	3/16"x1 1/4" FLAT STRIP	1	5	
BPL1	2	Ø 1/2"x8"	0	8	
BWM2	1	3"x3"x 1/4" WIRE MESH, 3'-1 5/8" x 1'-7 1/4"	3"x3"	WIRE € TO €	
BWM4	1	3"x3"x 1/4" WIRE MESH, 6'-8 1/2" x 1'-7 1/4"	3"x3"	WIRE € TO €	
1	8	1/2"Øx3 3/4" LG. EXPANSION ANCHOR (SSTL); HILTI KB-TZ OR EQUAL			

DATE: _____

REV. / REVISION DESCRIPTION:

ANDY'S BEST CAD
 9715 S. MERIMBULA ST.
 LITTLETON, CO 80130
 303-791-1622
 WWW.ANDYSBESTCAD.COM

DRAWN: A.LANDT
DESIGNED: A.LANDT
CLIENT: UNIVERSITY OF COLORADO
DATE: 05/04/09
SCALE: 1" = 1'-0"

PROJECT: UNIVERSITY OF COLORADO ATHLETIC STADIUM STRUCTURAL STEEL HANDRAILS AND RAILINGS

DRAWING TITLE: RAILING TYPE D7 & D8

DRAWING NO.: S208
OF _____

FABRICATION NOTES

- REMOVE ALL BURRS FROM EXPOSED CUT EDGES.
- EASE EXPOSED EDGES TO AN APPROXIMATE 1/8" RADIUS.

MATERIAL, COATING & FABRICATION SPECIFICATIONS

MATERIALS & FABRICATION	COATINGS
ALL TUBE SECTIONS: A500 GR. B	SURFACES EMBEDDED IN CONCRETE SHALL NOT BE GALVANIZED. RAILINGS SHALL BE HOT DIPPED GALVANIZED AFTER FABRICATION PER ASTM A123.
ALL PIPES: A53, GR. B, SCH. 40	
PLATES: A36	
WF, WT: A992	
OTHER SHAPES: A36	
HEADED ANCHOR STUDS: A108	
DEFORMED ANCHOR STUDS: A496	
ALL WELDING: AWS D1.1, E70 ELECTRODES	
SURFACE PREP: SSPC-SP10	

