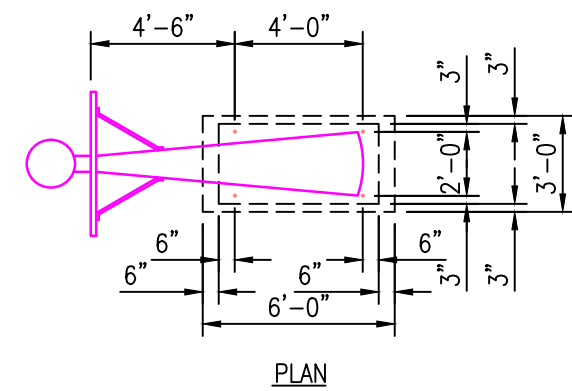
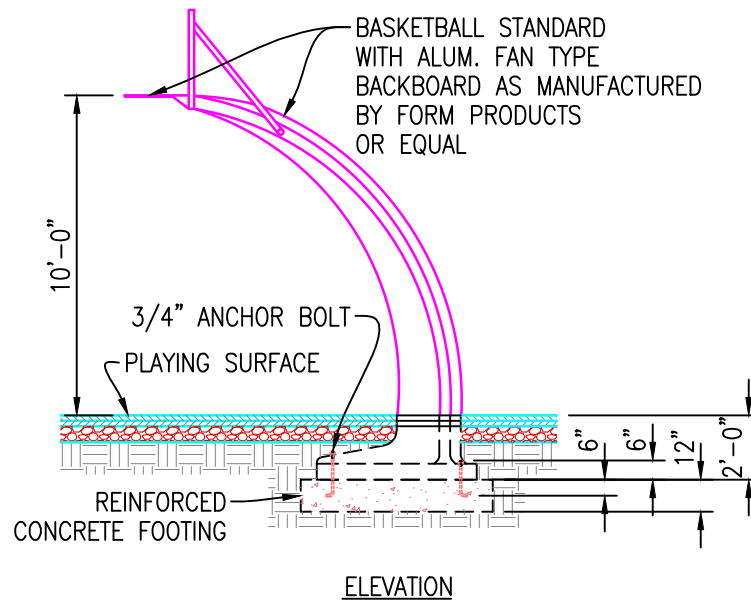
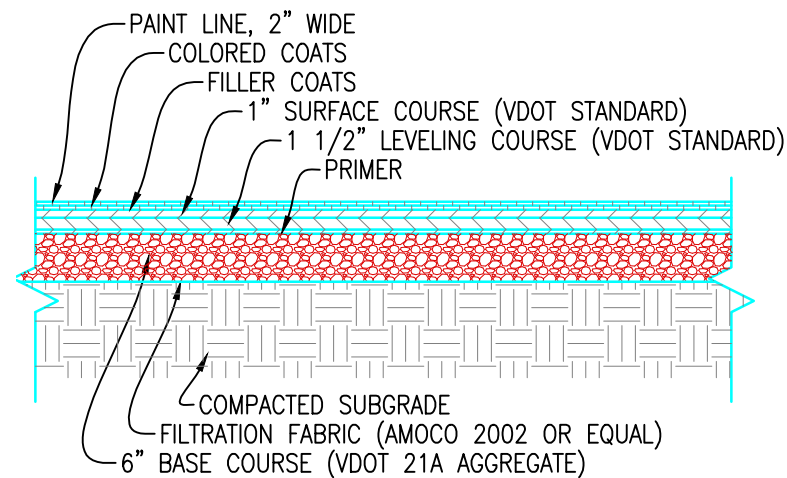


**BASKETBALL GOAL AND ANCHOR DETAIL**  
NO SCALE



**BASKETBALL STANDARD DETAIL**  
NO SCALE (OPTIONAL)



**TYP. BASKETBALL/TENNIS CT. PAVEMENT SECTION**  
NO SCALE

**NOTES:**  
**BASKETBALL GOALS**  
 BASKETBALL GOAL POSTS ARE TO BE QUALITY INDUSTRIES INC. NO. 411 "SINGLE CANTILEVERED POST, 4 1/2" O.D. GALVANIZED STEEL PIPE WITH 4' EXTENSION". BASKETBALL BACKBOARDS ARE TO BE QUALITY INDUSTRIES INC. NO. 6436 "FAN SHAPED ALUMINUM BACKBOARD WITH EXTRA HEAVY DUTY GOAL AND STEEL NET" OR NYLON NET.  
**FILLER COAT**  
 THE FILLER COAT SHALL BE LAYKOLD COLORCOAT 200, AS MANUFACTURED BY SPORTEC INTERNATIONAL INCORPORATED, OR APPROVED EQUAL.  
**COLOR COAT**  
 THE COLOR COAT SHALL BE LAYKOLD COLORCOAT 100, AS MANUFACTURED BY SPORTEC INTERNATIONAL INCORPORATED, OR APPROVED EQUAL.  
**LINE PAINT**  
 WHITE LINE PAINT SHALL BE USED. DO NOT USE OIL-BASE PAINT OR LACQUER, AS THIS WILL CAUSE BLEEDING OR CHECKING OF THE COLORCOAT.

DO NOT SCALE DRAWINGS  
 ALL DIMENSIONS IN INCHES  
 UNLESS NOTED OTHERWISE

DATE:

REVISION DESCRIPTION:

REV:



ANDY'S BEST CAD  
 1323 CARLYLE PARK CIRCLE  
 HIGHLANDS RANCH, CO 80129  
 303-808-3352  
 WWW.ANDYSBESTCAD.COM

DRAWN: A. LANDT  
 DESIGNED:  
 CLIENT:  
 DATE: 11/28/02  
 SCALE: AS SHOWN

DRAWING TITLE:  
 BASKETBALL  
 COURT SECTIONS  
 AND DETAILS

DRAWING NO.:

L01  
 01 OF 07